

12.0 Fibre Optic Splice Trays

12.1 Fibre Optic Splice Trays

Integrated Routing Single Element Splice Trays	163
Integrated Routing Single Circuit	164
Integrated Routing Single Circuit SC-B	165
Integrated Routing Single Element Splitter Tray	166
Hellipse NZDF SE-A Splice Trays	167
Hellipse NZDF SE-B Splice Tray	168
Hellipse NZDF SC-1 Splice Trays	169
Hellipse SMF SE-A Splice Tray	170
Hellipse SMF SE-B Splice Tray	171
Multi-Ribbon Splice Tray	172
Hellamass Large Splice Tray	173
Hellapon Medium Splice Trays	174
Hellapon Small Splice Trays	175
Splice Protector Holders	176
Tray Markers	177
Adhesive Tray Markers	178

12.0 Fibre Optic Splice Trays

Introduction

HellermannTyton offer a wide selection of fibre optic splice trays which are compatible with the variety of closures and enclosures available. Splice trays from the Hellipse and Integrated Routing (IR) ranges are supplied in packs of 6, this excludes the IR-SC trays, which are supplied in packs of 12. Trays from the Hellapon and Hellamass ranges are supplied in singular units. Multi-Ribbon trays are supplied in a packs of 3.

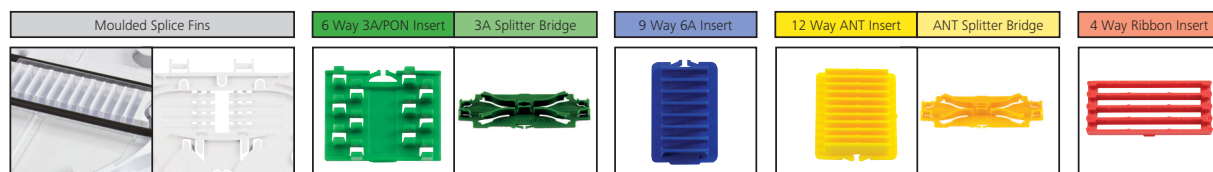
All fibre optic splice trays from HellermannTyton (apart from IR-SC and Hellipse NZDF SC-1) can accept a range of fibre optic splice inserts or splitter bridges which can house different numbers and different types of splice protectors and optical splitters on the trays.

The table below illustrates which bridge inserts are compatible with which splice trays and also the maximum number of splices each tray can accommodate using that insert. The fibre splice capacities are calculated on a single stack basis unless otherwise stated.

TRAY TYPE		IR				TUBED										
		Single Element		Single Circuit		Multi-Ribbon	Hellamass Large	Hellapon			Hellipse					
		SE	SC-B	SC	Medium			Small	SMF		NZDF					
									Style C	Style A & B	SE-B	SE-A	SC-1	SE-B	SE-A	
Dimensions W x H x D (mm)		148 x 125 x 7		148 x 125 x 3.5		182 x 148 x 14	145 x 440 x 19	96 x 235 x 7			85 x 158 x 9	195 x 148 x 7	182 x 148 x 7	184 x 148 x 3.5	184 x 148 x 7	202 x 148 x 7
BRIDGE TYPE		CAPACITY														
3A	Heat Shrinkable 2.4mm*	12		12	4	36	144	12	16	12	24	24	8	12	12	
	3A Splitter Bridge	8†		-	-	-	12†	8†	-	8†	-	-	-	8†		
6A	Heat Shrinkable 1.6mm*	-	18	-			216	-			18	-				18
Crimp (ANT)	Crimp (ANT)	-	24	12	4	-	288	24	24	24	-		8	24		
	ANT Splitter Bridge	-	14†	-	-	-	-	14†	-	14†	-		-	14†		
Ribbon	8 Fibre Ribbon	-				12	-									
	12 Fibre Ribbon	-				12	-									
	Splitter/ Ribbon	4	8	-	-	-	96	-	-	8	-	-	-	8	8	

* Recovered diameter of heat shrinkable splice protectors.

† Figures given are for 1 x Splitter bridge and 1 x 3A or ANT Splice bridge. Maximum Splitter/PON Device Size is 60 x 7 x 4 mm.





Integrated Routing Fibre Optic Splice Tray

IR Single Element SE

Features and Benefits

- Positive fibre management - minimum bend radius 30mm
- 2 fibre entry ports
- 2 mounting positions for splice inserts
- Optical splitter accommodation up to a maximum of 70 x 20 x 6mm
- Maximum splice capacity of 24 fibres
- Different splice bridge options allow for a splice type of up to 60mm



Single Element IR Trays available in a variety of colours



Single Element IR Trays with 3A splice bridges (6 pk)



Single Element IR Trays with ANT splice bridges (6 pk)

Technical Description

The Integrated Routing (IR) single element tray is manufactured from ABS and finished to a high specification to eliminate the risk of snagging or microbends. All retaining tabs on the tray have radius edges and rounded corners where fibre may pass. The overall dimensions of the tray are 148 x 125 x 7mm.

The IR single element tray accepts a wide range of splice protector inserts and the maximum splice capacity of the tray is based on 24

double stacked heatshrink (3A) splice protectors up to 60mm long.

The IR single element tray can accommodate 2 x 60 x 7 x 4mm optical splitters when using the optional splitter/3A or ANT splice bridge. A single optical splitter up to a maximum of 60 x 7 x 4mm can be fitted into the tray in place of a splice bridge. The IR single element tray is suitable for use in the UFC-IR, FDN-IR or FML-IR closures.

TYPE	Tray Type	Splice Protector Type	Colour	Tray Quantity	Article-No.
TRAY-SE-IR-06	IR SE	Not supplied	White	6	857-40258
TRAY-SE-IR-2X3A-06	IR SE	3A	White	6	857-40257
TRAY-SE-IR-BK-2X3A-06	IR SE	3A	Black	6	857-40487
TRAY-SE-IR-BL-2X3A-06	IR SE	3A	Blue	6	857-40504
TRAY-SE-IR-YE-2X3A-06	IR SE	3A	Yellow	6	857-40505
TRAY-SE-IR-RD-2X3A-06	IR SE	3A	Red	6	857-40506
TRAY-SE-IR-GN-2X3A-06	IR SE	3A	Green	6	857-40507
TRAY-SE-IR-2X6A-06	IR SE	6A	White	6	857-40251
TRAY-SE-IR-2XANT-06	IR SE	Crimp (ANT)	White	6	857-40253
TRAY-SE-IR-2X4 WAY RIBBON-06	IR SE	Splitter/Ribbon	White	6	857-40255

Products listed are for standard configurations, other configurations and splice insert types are available - see Page 176

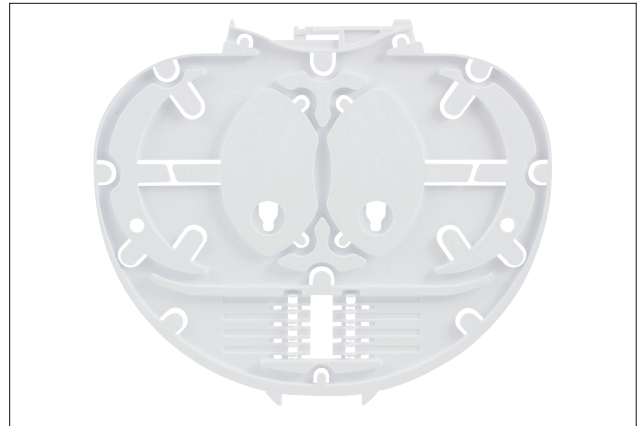


Integrated Routing Fibre Optic Splice Tray

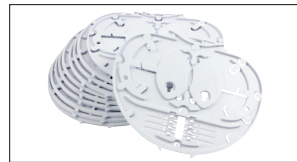
IR Single Circuit SC

Features and Benefits

- Positive fibre management - minimum bend radius 30mm
- 2 fibre entry ports
- Moulded splice holder fins for heatshrink (3A) or Crimp (ANT) splice protectors
- Maximum splice capacity of 4 fibres



Single Circuit IR Tray



Single Circuit IR Splice Trays (12 pk)

Technical Description

The IR single circuit tray is manufactured from ABS and finished to a high specification to eliminate the risk of snagging or microbends. All retaining tabs on the tray have radius edges and rounded corners where fibre may pass. The overall dimensions of the tray are 148 x 126

x 3.5mm.

The IR single circuit tray is suitable for use in the UFC-IR, FDNIR and FML-IR closures and IR enclosures.

TYPE	Tray Type	Splice Protector Type	Tray Quantity	Article-No.
TRAY-SC-IR-12	IR SC	3A, Crimp (ANT)	12	857-40244

Products listed are for standard configurations, other configurations and splice insert types are available - see Page 176



Integrated Routing Fibre Optic Splice Tray

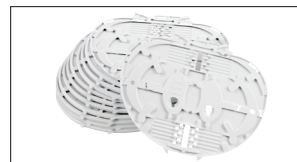
IR Single Circuit SC-B

Features and Benefits

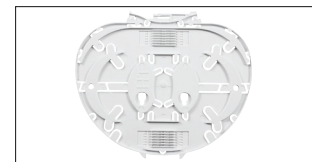
- Positive fibre management minimum bend radius 30mm
- 2 fibre entry ports
- Moulded splice holder fins for heatshrink (3A) or Crimp (ANT) splice protectors
- Maximum splice capacity of 12 fibres



Single Circuit IR 3A Splice Tray in a variety of colours



Single Circuit IR 3A Splice Trays (12 pk)



Single Circuit IR ANT Splice Tray

Technical Description

The Integrated Routing (IR) single circuit SC-B trays is manufactured from ABS and finished to a high specification to eliminate the risk of snagging or microbends. All retaining tabs on the tray have radius edges and rounded corners where fibre may pass. The overall

dimensions of the tray are 148 x 125 x 3.5mm. The tray is available in two styles which accept either 3A or ANT/Crimp splice protectors.

The IR single circuit SC-B tray is suitable for use in the UFC-IR, FDN-IR and FML-IR closures as well as the IR enclosure range.

TYPE	Tray Type	Splice Protector Type	Colour	Tray Quantity	Article-No.
TRAY-SC-B-IR-2X3A-12	IR SC-B	3A	White	12	857-40335
TRAY-SC-B-IR-BK-2X3A-12	IR SC-B	3A	Black	12	857-40498
TRAY-SC-B-IR-BL-2X3A-12	IR SC-B	3A	Blue	12	857-40499
TRAY-SC-B-IR-GN-2X3A-12	IR SC-B	3A	Green	12	857-40500
TRAY-SC-B-IR-RD-2X3A-12	IR SC-B	3A	Red	12	857-40501
TRAY-SC-B-IR-YE-2X3A-12	IR SC-B	3A	Yellow	12	857-40502
TRAY-SC-B-IR-2XANT-12	IR SC-B	Crimp (ANT)	White	12	857-40336

Products listed are for standard configurations, other configurations and splice insert types are available - see Page 176



Integrated Routing Fibre Optic Splice Tray

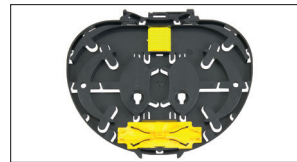
IR Single Element Splitter SE-B

Features and Benefits

- Positive fibre management minimum bend radius 30mm
- 2 fibre entry ports
- Supplied with a splice only bridge and splitter / splice bridge insert
- Black tray colour provides high contrast to standard fibre management trays
- Maximum splice capacity of 14 fibres (heatshrink/3A)



IR Single Element Splitter SE-B 3A Tray



IR Single Element Splitter SE-B ANT Tray

Technical Description

The Integrated Routing (IR) single element splitter tray is manufactured from black ABS and finished to a high specification to eliminate the risk of snagging or microbends. All retaining tabs on the tray have radius edges and rounded corners where fibre may pass. The overall dimensions of the tray are 148 x 125 x 7mm. The IR single element splitter tray is supplied with an optical splitter/3A or ANT splice bridge at

the front, which will accommodate 2 x 60 x 7 x 4mm optical splitters, and a 3A or ANT bridge at the rear. The maximum splice capacity of the tray is 14 fibres based on 14 double stacked heatshrink (3A) splice protectors up to 60mm long. The IR single element splitter trays is suitable for use in the UFC-IR, FDN-IR and FML-IR closures and IR enclosures.

TYPE	Tray Type	Splice Protector Type	Tray Quantity	Article-No.
TRAY-BK-SE-B-IR-SP/3A-06	IR SE/BK	3A, PLC Holder	6	857-40428
TRAY-BK-SE-B-IR-SP/ANT-06	IR SE/BK	Crimp (ANT), PLC Holder	6	857-40429

Products listed are for standard configurations, other configurations and splice insert types are available - see Page 176

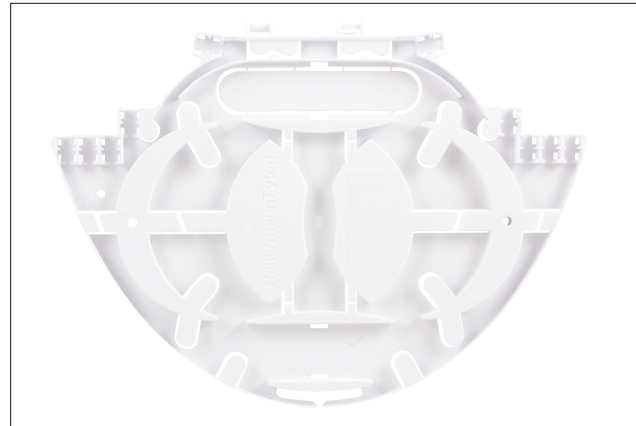


Tubed Fibre Optic Splice Tray

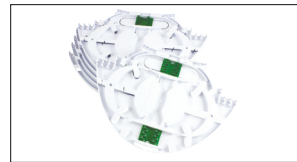
Hellipse NZDF SE-A

Features and Benefits

- Positive fibre management - minimum bend radius 37.5mm
- 10 fibre entry ports
- 2 mounting positions for splice protector inserts
- Optical splitter accommodation up to a maximum of 70 x 20 x 6mm
- Back to back mounting capability allows routing of fibre between trays
- Maximum splice capacity of 24 fibres (double stacked)



Hellipse NZDF SE-A Splice Tray with no inserts



Hellipse Tray with 3A splice bridges (6 pk)



Hellipse NZDF SE-A Tray with ANT splice bridges (6 pk)

Technical Description

The Hellipse NZDF SE-A is an elliptical tray designed for single element and single circuit applications which is manufactured from ABS and finished to a high specification to eliminate the risk of snagging or microbends. All retaining tabs on the tray have radius edges and rounded corners where fibre may pass. The overall dimensions of the tray are 202 x 148 x 7mm. The Hellipse NZDF SE-A tray accepts a wide

range of splice protectors and can accommodate an optical splitter up to a maximum of 70 x 20 x 6mm.

The tray has 2 pivot points to allow for mounting into a 6 tray module and is suitable for use in the FDN or UFC tubed closures. The maximum splice capacity of the Hellipse NZDF SE-A tray is based on 24 double stacked heatshrink (3A) splice protectors upto 60mm long.

TYPE	Tray Type	Splice Protector Type	Tray Quantity	Article-No.
TRAY-NZDF-SE-A-3A-06	Hellipse NZDF SE-A	3A	6	857-40271
TRAY-NZDF-SE-A-ANT-06	Hellipse NZDF SE-A	Crimp (ANT)	6	857-40272
TRAY-NZDF-SE-A-06	Hellipse NZDF SE-A	Not supplied	6	857-40270

Products listed are for standard configurations, other configurations and splice insert types are available - see Page 176

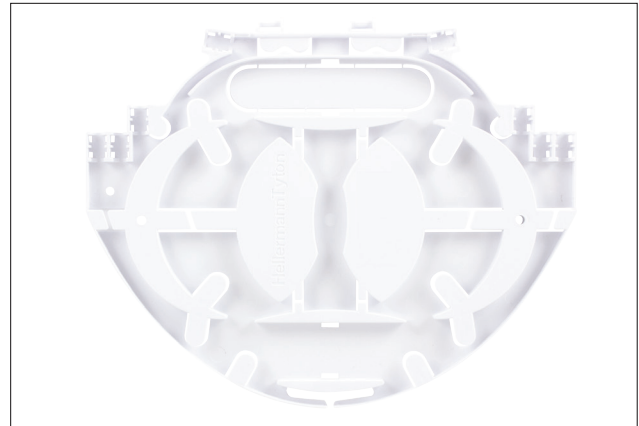


Tubed Fibre Optic Splice Tray

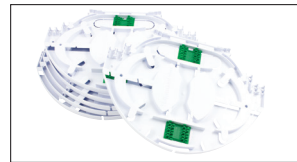
Hellipse NZDF SE-B

Features and Benefits

- Positive fibre management - minimum bend radius 37.5mm
- 8 fibre entry ports
- 2 mounting positions for splice protector inserts
- Optical splitter accommodation up to a maximum of 70 x 20 x 6mm
- Back to back mounting capability allows routing of fibre between trays
- Maximum splice capacity of 24 fibres



Hellipse NZDF SE-B Tray with no inserts



Hellipse Tray with 3A splice bridges (6 pk)



Hellipse NZDF-SE-B Tray with ANT splice bridges (6 pk)

Technical Description

The Hellipse NZDF SE-B is an elliptical tray designed for single element and single circuit applications which is manufactured from ABS and finished to a high specification to eliminate the risk of snagging or microbends. All retaining tabs on the tray have radius edges and rounded corners where fibre may pass. The overall dimensions of the tray are 184 x 148 x 7mm and the maximum splice capacity of 24 fibres

is based on 24 double stacked heatshrink 3A splice protectors up to 60mm long.

The Hellipse NZDF SE-B tray accepts a wide range of splice protectors and can accommodate an optical splitter up to a maximum of 70 x 20 x 6mm. The tray has 2 pivot points to allow for mounting into a 6 tray module and is suitable for use in the FML tubed closures.

TYPE	Tray Type	Splice Protector Type	Tray Quantity	Article-No.
TRAY-NZDF-SE-B-3A-06	Hellipse NZDF SE-B	3A	6	857-40275
TRAY-NZDF-SE-B-ANT-06	Hellipse NZDF SE-B	Crimp (ANT)	6	857-40276
TRAY-NZDF-SE-B-06	Hellipse NZDF SE-B	Not supplied	6	857-40274

Products listed are for standard configurations, other configurations and splice insert types are available - see Page 176

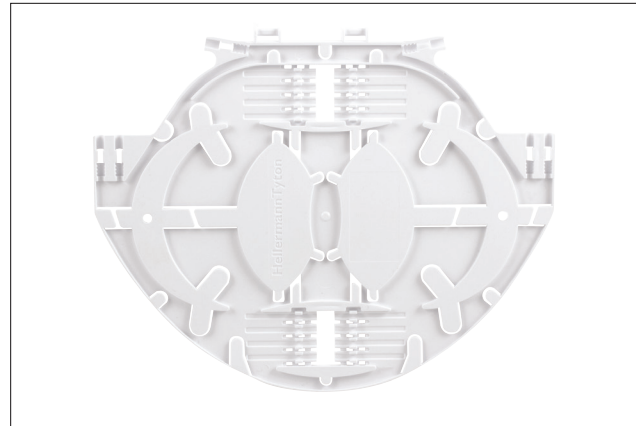


Tubed Fibre Optic Splice Tray

Hellipse NZDF SC-1

Features and Benefits

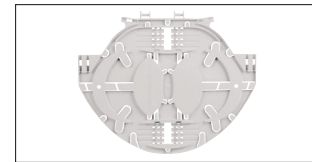
- Positive fibre management - minimum bend radius 37.5mm
- 6 fibre entry ports
- Increased tray capacity compared to Hellipse NZDF SE trays
- 2 mounting positions for splice inserts
- Accepts 8 3A (heatshrink) or Crimp (ANT) splice protectors
- Integrally moulded retention feature secures protection tubes
- Maximum splice capacity of 8 fibres



Hellipse Single Circuit Splice Tray (White shown)



Hellipse Single Circuit Trays (6 pk)



Hellipse Single Circuit Splice Tray (Grey shown)

Technical Description

The Hellipse NZDF SC-1 pack consists of the 3 x NZDF SC-1A (white) and 3 x NZDF SC-1B (grey) which are elliptical trays designed for single circuit applications. Both trays are manufactured from ABS and finished to a high specification to eliminate the risk of snagging or microbends. All retaining tabs on the trays have radius edges and rounded corners

where fibre may pass. The overall dimensions of the trays are 184 x148 x 3.5mm.

The NZDF SC-1 trays accept 8 x 3A (heatshrink) or 8 x ANT splice protectors. The NZDF SC-1 tray pack is suitable for use in the UFC, FDN or FML tubed closures.

TYPE	Tray Type	Splice Protector Type	Tray Quantity	Article-No.
TRAY-NZDF-SC-1-06	Hellipse NZDF SC-1	3A, Crimp (ANT)	6	857-40280

Products listed are for standard configurations, other configurations and splice insert types are available - see Page 176

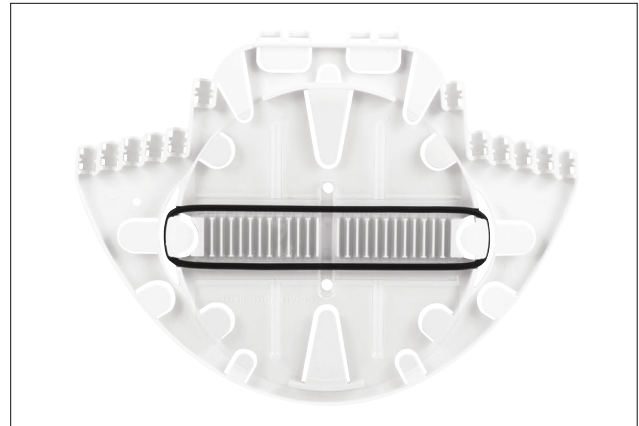


Tubed Fibre Optic Splice Tray

Hellipse SMF SE-A

Features and Benefits

- Bend radius 30mm
- 12 fibre entry ports
- Moulded splice protector holder which accepts 3A (heatshrink) splice inserts
- Splice retaining strap
- Maximum splice capacity of 24 fibres



Hellipse SMF SE-A Splice Tray



Hellipse SMF Tray (6 pk)

Technical Description

The Hellipse NZDF SMF SE-A is an elliptical tray designed for single element applications which is manufactured from ABS and finished to a high specification to eliminate the risk of snagging or microbends. All retaining tabs on the tray have radius edges and rounded corners where fibre may pass. The overall dimensions of the tray are 195 x 148 x 7mm

and the maximum splice capacity of 24 fibres is based on 24 heatshrink 3A splice protectors up to 45mm long.

The Hellipse NZDF SMF SE-A tray has moulded splice protector holders which accept a 3A (heatshrink) splice insert and is suitable for use in the FDN or UFC tubed closure.

TYPE	Tray Type	Splice Protector Type	Tray Quantity	Article-No.
TRAY-SMF-SE-A-3A-06	Hellipse SMF SE-A	3A	6	857-40273

Products listed are for standard configurations, other configurations and splice insert types are available - see Page 176

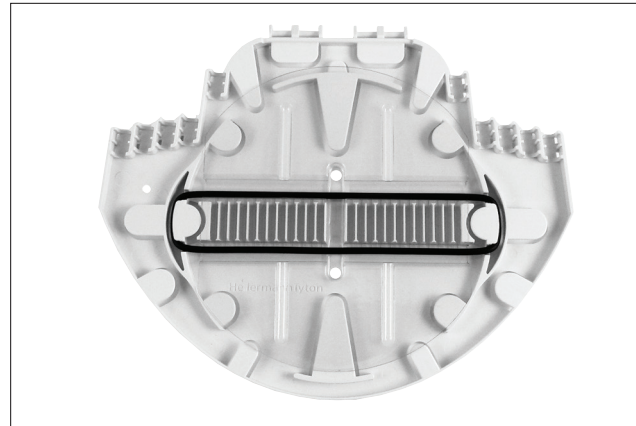


Tubed Fibre Optic Splice Tray

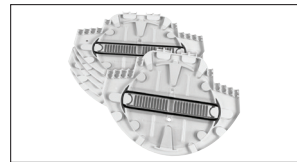
Hellipse SMF SE-B

Features and Benefits

- Bend radius 30mm
- 10 fibre entry ports
- Moulded splice protector holder which accepts 3A (heatshrink) splice inserts
- Splice retaining strap
- Maximum splice capacity of 24 fibres



Hellipse SMF SE-B Splice Tray



Hellipse SMF SE-B Splice Tray (6 pk)

Technical Description

The Hellipse NZDF SMF SE-B is an elliptical tray designed for single element applications which is manufactured from ABS and finished to a high specification to eliminate the risk of snagging or microbends. All retaining tabs on the tray have radius edges and rounded corners where fibre may pass. The overall dimensions of the tray are 182 x 148 x 7mm

and the maximum splice capacity of 24 fibres is based on 24 heatshrink 3A splice protectors up to 45mm long.

The Hellipse NZDF SMF SE-B tray has moulded splice protector holders which accept a 3A (heatshrink) splice insert and is suitable for use in the FML tubed closure.

TYPE	Tray Type	Splice Protector Type	Tray Quantity	Article-No.
TRAY-SMF-SE-B-06	Hellipse SMF SE-B	3A	6	857-40281

Products listed are for standard configurations, other configurations and splice insert types are available - see Page 176

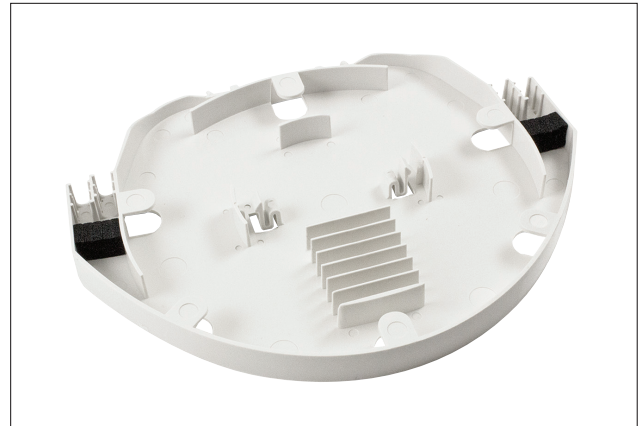


Tubed Fibre Optic Splice Tray

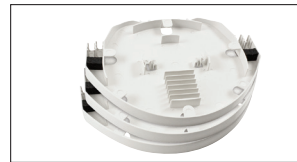
Multi-Ribbon

Features and Benefits

- Positive fibre management minimum bend radius 35mm
- 4 fibre entry ports
- Moulded splice holder fins for 8 or 12 fibre ribbon cable or 3A (heatshrink) splice protectors
- Maximum splice capacity of 12 (8 or 12 fibre) ribbon cable or 36 fibres (3A)



Multi-Ribbon Splice Tray



Multi-Ribbon Splice Tray (3 pk)

Technical Description

The Multi-Ribbon tray is an elliptical tray designed for high fibre count multiple applications which is manufactured from ABS and finished to a high specification to eliminate the risk of snagging and microbends. All retaining tabs have radius edges and rounded corners where fibre may

pass. The overall dimensions of the tray are 182 x 148 x 14mm. Each Multi-Ribbon tray accepts 12 x 12 or 8 fibre ribbon cable or 36 x 3A (heatshrink) splice protectors and is suitable for use with the UFC and FDN tubed closures.

TYPE	Tray Type	Splice Protector Type	Tray Quantity	Article-No.
TRAY-MR-TB-03	Multi-Ribbon	12 Fibre Ribbon, 8 Fibre Ribbon, 3A	3	857-40345

Products listed are for standard configurations, other configurations and splice insert types are available - see Page 176



Tubed Fibre Optic Splice Tray

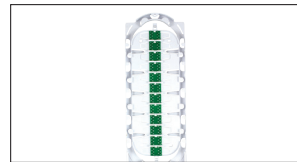
Hellamass Large

Features and Benefits

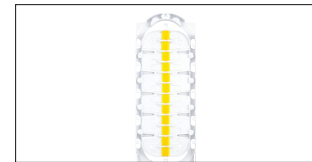
- Bend radius of 37.5mm
- 4 large fibre entry ports
- Ports allow fibre entry and exit from the same side
- Facilitates fibre route reversal
- Optical splitter accommodation up to a maximum of 70 x 20 x 60mm
- Fibre storage area on reverse side
- Different splice protector holder options allow for a splice type of up to 60mm in length
- Maximum splice capacity of 144 fibres



Large Hellamass Splice Tray with no inserts



Large Hellamass Tray with 3A splice bridges



Large Hellamass Tray with ANT splice bridges

Technical Description

The Hellamass large is a rectangular double sided tray designed for high fibre count multiple applications which is manufactured from ABS and finished to a high specification to eliminate the risk of snagging or microbends. All retaining tabs on the tray have radius edges and rounded corners where fibre may pass. The tray is supplied with 2 clear plastic cover plates and is mounted using a single pivot point on

to a flexible hinge. The overall dimensions of the tray are 440 x 145 x 19mm and the maximum splice capacity of 144 fibres is based on 12 heatshrink 3A splice protector holders fitted to each side of the tray.

The Hellamass Large tray it is suitable for use in the FML and UFC closures as well as rack mounted applications.

TYPE	Tray Type	Splice Protector Type	Tray Quantity	Article-No.
TRAY-HL-3A-01	Hellamas Large	3A	1	857-40302
TRAY-HL-ANT-01	Hellamas Large	Crimp (ANT)	1	857-40303
TRAY-HL-01	Hellamas Large	Not supplied	1	857-40304

Products listed are for standard configurations, other configurations and splice insert types are available - see Page 176

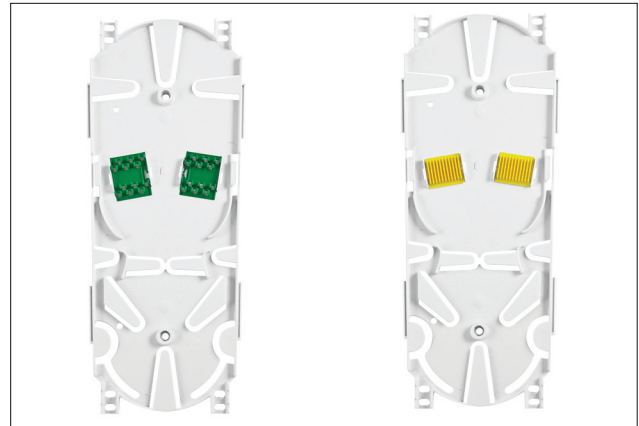


Tubed Fibre Optic Splice Tray

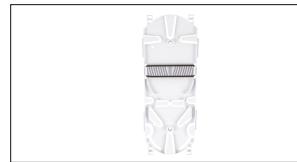
Hellapon Medium

Features and Benefits

- Bend radius 30mm
- 4 fibre entry ports
- Choice of fixed or pivot point mounting available
- Various styles of tray which accept 3A or ANT/Crimp splice protectors
- Option for optical splitter/3A or ANT splice bridge
- Available without fins for mounting other holder types
- Maximum splice capacity of 24 x 3A (Style C) or 24 x ANT/Crimp



Hellapon Medium - Style C with 3A bridges and ANT bridges (HMC)



Hellapon Medium 3A - Style A (HMA)



Hellapon Medium - Style B (HMB)

Technical Description

The Hellapon medium is a rectangular tray designed for single element applications which is manufactured from ABS and finished to a high specification to eliminate the risk of snagging or microbends. All retaining tabs on the tray have radius edges and rounded corners where fibre may pass. The overall dimensions of the tray are 235 x 96 x 7mm and the maximum splice capacity of 24 x 3A (double stacked) splice protectors up to 60mm long (Style C) or 16 x 3A splice protectors up to

45mm long (Style A).

The tray is available in three styles, Style C which accepts either a standard HellermannTyton 3A, ANT/Crimp and the optical splitter/3A or ANT splice bridge and can accommodate 2 x 60mm x 7mm x 4mm optical splitters. Style A has moulded splice fins (3A or ANT/Crimp) both of which can be mounted on a fixed support or flexible side hinges for FRBU tubed closures and Style B has side mounted pivots for FML closures. Style A trays are colour coded, white for 3A and yellow for crimp inserts.

TYPE	Tray Type	Splice Protector Type	Tray Quantity	Article-No.
TRAY-HMA-3A-01	Hellapon Medium	3A	1	857-40267
TRAY-HMB-3A-01	Hellapon Medium	3A	1	857-40269
TRAY-HMC-3A-01	Hellapon Medium	3A	1	857-40353
TRAY-HMA-ANT-01	Hellapon Medium	Crimp (ANT)	1	857-40268
TRAY-HMC-ANT-01	Hellapon Medium	Crimp (ANT)	1	857-40354

Products listed are for standard configurations, other configurations and splice insert types are available - see Page 176



Tubed Fibre Optic Splice Tray

Hellapon Small

Features and Benefits

- Bend radius 30mm
- 2 fibre entry ports
- 2 mounting positions for splice protector inserts
- Option for optical splitter/3A or ANT splice bridge
- Optical splitter accommodation up to a maximum of 70 x 20 x 6mm
- Back to back mounting capability allows routing of fibre between trays
- Maximum splice capacity of 24 fibres
- Splice retaining strap



Small Hellapon Splice Tray with no inserts



Small Hellapon Tray with 3A splice bridges



Small Hellapon Tray with ANT splice bridges

Technical Description

The Hellapon small tray is manufactured from ABS and finished to a high specification to eliminate the risk of snagging or microbends. All retaining tabs on the tray have radius edges and rounded corners where fibre may pass. The overall dimensions of the tray are 158 x 85 x 9mm and the maximum splice capacity of 24 fibres is based on 24 double stacked heatshrink 3A splice protectors up to 60mm long.

The Hellapon small tray accepts a wide range of splice protectors and can accommodate 2 x 60 x 70 x 4mm optical splitters when using the

optional splitter/3A or ANT splice bridge. A single optical splitter up to a maximum of 70 x 20 x 6mm can be fitted into the tray in place of a splice bridge. The tray can be mounted either on a fixed support or flexible end mounted hinge and is suitable for use in the FST and FRBU tubed closures.

TYPE	Tray Type	Splice Protector Type	Tray Quantity	Article-No.
TRAY-HS-3A-01	Hellapon Small	3A	1	857-40278
TRAY-HS-ANT-01	Hellapon Small	Crimp (ANT)	1	857-40279
TRAY-HS-01	Hellapon Small	Not supplied	1	857-40277

Products listed are for standard configurations, other configurations and splice insert types are available - see Page 176



Accessories

Splice Protector Holders

Features and Benefits

- Used to secure different types of splice protector within the splice tray
- 4 options available for the most common applications
- Optical splitter/3A or ANT option



Splice Protector Holders (assortment shown)

Technical Description

The Splice Protector Holders (Splice Bridges) are colour coded for easy identification and allow for different types of splice protectors in the tray. Inserts are suitable for use with HellermannTyton Hellipse NZDF-SE-A/SE-B, IR-SE and Hellapon Medium (Style C)/Small and Hellamass

Large trays. The optical splitter splice bridges will accept 2 x 60 x 7 x 4mm optical splitters plus 2 3A or ANT splices. All trays accept 2 splice protector holders excluding the Hellamass Large which accepts 12 inserts.

TYPE	Description	Colour	Pack Content	Recov. Ø d max.	Article-No.
BRIDGE-3A	Splice Protector Holder 3A Heatshrink	Green (GN)	10	2.4	857-40298
BRIDGE-6A	Splice Protector Holder 6A Heatshrink	Blue (BU)	10	1.6	857-40299
BRIDGE-CRIMP	Splice Protector Holder Crimp (ANT)	Yellow (YE)	10	-	857-40300
BRIDGE-MECH	Splice Protector Holder Splitter/Ribbon	Red (RD)	10	4.75	857-40301

All dimensions in mm. Subject to technical changes.



Accessories

Tray Markers

Features and Benefits

- Aids tray identification
- Quick and simple to fit
- 6 different colours per pack



Tray Marker Kit



Tray Marker Kit (selection of colours shown)



Tray Marker Kit (shown on trays)

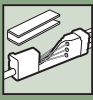
Technical Description

A set of 36 tray markers in 6 different colours - Black, Blue, Green, Orange, Violet and Yellow which are suitable for use with the HellermannTyton NZDF SE-A and SE-B trays. The coloured markers are

made from silicone and fit onto the front of the tray to allow for easy identification.

TYPE	Description	Pack Content	Quantity per	Article-No.
TM-NZDF-SE-36	Tray Markers	36	bag	857-40355

All dimensions in mm. Subject to technical changes.



Accessories

Adhesive Tray Markers

Features and Benefits

- Aids tray identification
- Suitable for use with the full range of HellermannTyton Trays
- Quick and simple to fit
- 6 different colours per pack



Adhesive Tray Markers



Adhesive Tray Marker shown on tray



Adhesive Tray Markers

Technical Description

A set of 60 vinyl adhesive tray markers in 6 different colours - Black, Blue, Green, Orange, Red and Yellow. The 14mm x 4mm coloured

markers are made from vinyl adhesive and are suitable for use with the full range of HellermannTyton trays.

TYPE	Description	Pack Content	Quantity per	Article-No.
TM-14X4-60	Adhesive Tray Markers	60	bag	857-40363

All dimensions in mm. Subject to technical changes.