





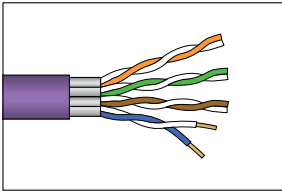
Category 6A

<b>Cable</b>	U/FTP Cca	14
	U/FTP Dca	
	U/UTP Dca	
<b>Patch Leads</b>	Cat6A Stranded S/FTP	15
	Cat6A Stranded U/UTP	
	Cat6A Solid S/FTP	
<b>Outlets</b>	Cat6A Solid U/UTP	16
	Shielded	
	Unshielded	

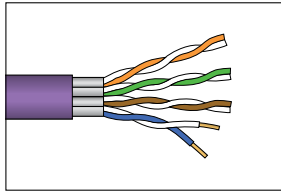
<b>Panels</b>	Shielded	Flat	17
		Angled	
	Unshielded	Flat	
<b>Pre-terminated Assemblies</b>		Angled	18
	U/FTP Standard Cassette		
	U/UTP Standard Cassette		
	U/UTP Short Body Cassette		

### Cable

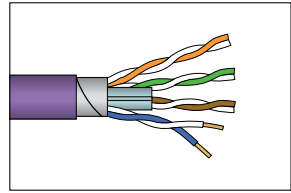
#### Bulk Copper Cable



CA195



CA159 DCA



CA183 DCA



### Product Description

HellermannTyton Category 6A cable offers best in class manufacturing, producing a premium quality cable that not only exceeds your network requirements but supports our true 25 year system warranty.

Our Category 6A cables conform to the Construction Products Regulation (CPR) and are available in Cca and Dca Euroclasses for shielded requirements and Dca for Unshielded.



Suitable for POE applications.

Cable Type	Screening Type	EuroClass	Unit	ORDER INFO
Category 6A 4 Pair 23AWG Solid Core	U/FTP - Individual Pairs in Foil	Cca-s1b-d1-a1	500m Reel	<b>CA195</b>
	U/FTP - 2 Pairs in S-Foil	Dca-s2-d2-a2	500m Reel	<b>CA159 DCA</b>
	U/UTP - Unshielded discontinuous Foil	Dca-s2-d2-a2	305m Reel	<b>CA183 DCA</b>

BS6701 A1:2017 States the minimum Level of cabling within a building for reaction to fire as being Cca-s1b,d2,a2.

## Patch Leads

### Stranded and Solid



RJ45C6AGY-10.0M



RJ45C6A-10.0M-S-LS/VI-CCA



RJ45C6AUGY-10.0M

### Product Description

All Category 6A patch leads are available in both stranded and solid core variations and are made to order in our Northampton factory. This provides flexibility for your project requirements allowing you to request bespoke wire maps (Crossover etc.), lengths and labelling.

Each patch lead is individually tested and quality checked before it leaves the factory.



Suitable for POE applications.

Cable Type	Shielding Type	Colour	ORDER INFO
CAT6A Stranded	S/FTP	Grey	<b>RJ45C6AGY-10.0M</b>
	U/UTP	Grey	<b>RJ45C6AUGY-10.0M</b>
CAT6A Solid	U/FTP	Violet	<b>RJ45C6A-10.0M-S-LS/VI-CCA</b>
	U/UTP	Violet	<b>RJ456AU-10.0M-S-LS/VI</b>

## Outlets

### Shielded and Unshielded



KSJ08SC6A



GSTJ6A



HT-TT02D



For Termination Tool  
please see page 88

### Product Description

The HellermannTyton Category 6A Keystone Jack range offers superior performance and reliability for your 10G network requirements. HellermannTyton outlets are available in both shielded and unshielded options to suit a variety of project specifications. Both Keystone models require no punch down or palm tool and instead utilizes our comfort termination tool.



Suitable for PoE applications.

### Features and Benefits

#### KSJ08SC6A

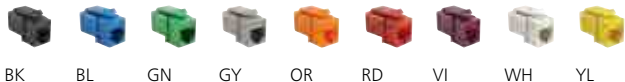
- Quality die cast body
- 360° shielding gives all round protection from alien crosstalk
- Single action hand tool termination
- Suitable for PoE applications

#### GSTJ6A

- Compact Keystone Design
- Patented Contact Technology
- Integral Strain Relief
- Ideal for HD patching
- Available in 9 standard colours

Outlet Type	Screening Type	Unit	ORDER INFO
Category 6A Keystone Jacks	Shielded	Single	<b>KSJ08SC6A</b>
		12pcs	<b>KSJ08SC6A-12</b>
	Unshielded	Single	<b>GSTJ6A-XX</b>
Tool Type	Item	ORDER INFO	
Jack Termination	Keystone Jack Termination Tool UTP / FTP	<b>HT-TT02D</b>	

XX denotes colour of keystone



BK

BL

GN

GY

OR

RD

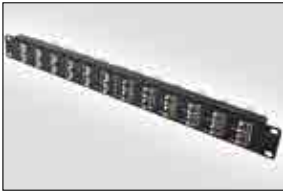
VI

WH

YL

**Panels**

**1U and 2U**



HT-FAPP-1U24RS



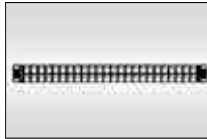
PP24G6A-PA1URS-FD



HT-SAPP-1U24RS



GSTPP-1U24RS



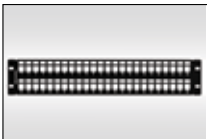
GSTPP-1U48RS



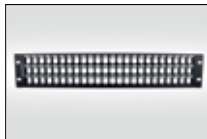
GSTAPP-1U24RS



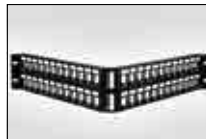
GSTAPP-1U48RS



GSTPP-2U48RS



GSTPP-2U72RS



GSTAPP-2U48RS



GSTAPP-2U72RS

Panel Type	Shielding Type	Presentation	U Size	Port Count	ORDER INFO		
Modular Patch Panels	Shielded	Flat	1U	24 Port	HT-FAPP-1U24RS		
			1U	24 Port	PP24G6APA1URS-FD.XX		
		Angled	1U	24 Port	HT-SAPP-1U24RS		
	Unshielded	Flat	Flat	1U	24 Port	GSTPP-1U24RS	
				1U	48 Port	GSTPP-1U48RS	
			2U	48 Port	GSTPP-2U48RS		
			2U	72 Port	GSTPP-2U72RS		
		Angled	Flat	Angled	1U	24 Port	GSTAPP-1U24RS
					1U	48 Port	GSTAPP-1U48RS
			Angled	Angled	2U	48 Port	GSTAPP-2U48RS
					2U	72 Port	GSTAPP-2U72RS

## RapidNet

## 6 Port U/FTP and U/UTP



RN06G6A Cat6A U/FTP Cassette



RN06G6A-CACAXX Cassette to Cassette



RN06G6A-CAKJXX Cassette to Keystone Jack



RN06G6A-CAPLXX Cassette to RJ45



RN06G6A-CABEXX Cassette to Bare End



RN06G6A-CAPBXX Cat6A U/FTP Cassette to Pod



RN06U6A Cat6A U/UTP Cassette



RN06U6A-CABEXX Cassette to Bare End



RN06U6A-CAKJBK Cassette to Keystone Jack



RN06U6A-CBCBBK Cat6A U/UTP Short Body Cassette



RN06U6A-CBBEBK Short Body Cassette to Bare End



RN06U6A-CBGTBK Short Body Cassette to Keystone Jack

## Product Description

The RapidNet product range is a pre-terminated and pre-tested network solution that offers speed and convenience within mission critical environments.

The Category 6A RapidNet solution is perfectly suited for the Datacentre market where the reduction of installation time is pivotal to project success. Class Ea systems are recommended as the minimum to be installed within the datacentre main, intermediate and zone cabling areas.

RapidNet offers a number of connectivity options to give you flexibility and choice within your network design.

## Features and Benefits

- Exceeds Category 6A performance standards
- 24 Ports per 1U
- Factory pre-terminated and tested
- Reduce installation times by up to 85%
- Ideal solution for Datacentres
- Backward compatible with Cat6, Cat5e and voice
- Available in Dca and Cca Euroclass



Suitable for POE applications.

Cable Type	Port Count	End A	End B	ORDER INFO
CAT6A U/FTP LSZH Cca	6 Port	Cassette	Cassette	<b>RN06G6A-CACAXX-10.0M-CCA</b>
			Keystone Jack	<b>RN06G6A-CAKJXX-10.0M-CCA</b>
			RJ45 Plug	<b>RN06G6A-CAPLXX-10.0M-CCA</b>
			Bare End	<b>RN06G6A-CABEXX-10.0M-CCA</b>
			Pod	<b>RN06G6A-CAPBXX-10.0M-CCA</b>
CAT6A U/UTP LSZH Dca	6 Port	Cassette	Cassette	<b>RN06U6A-CACAXX-10.0M</b>
			Keystone Jack	<b>RN06U6A-CAGTXX-10.0M</b>
			Bare End	<b>RN06U6A-CABEXX-10.0M</b>
			Pod	<b>RN06G6A-CAPBXX-10.0M</b>
		Short Cassette	Short Cassette	<b>RN06U6A-CBCBXX-10.0M</b>
			Keystone Jack	<b>RN06U6A-CBGTXX-10.0M</b>
			Bare End	<b>RN06U6A-CBBEXX-10.0M</b>
			Pod	<b>RN06U6A-CBPBXX-10.0M</b>

CAT6A U/UTP XX denotes colour of keystone

