

### RapidNet Category 6A Shielded F/FTP

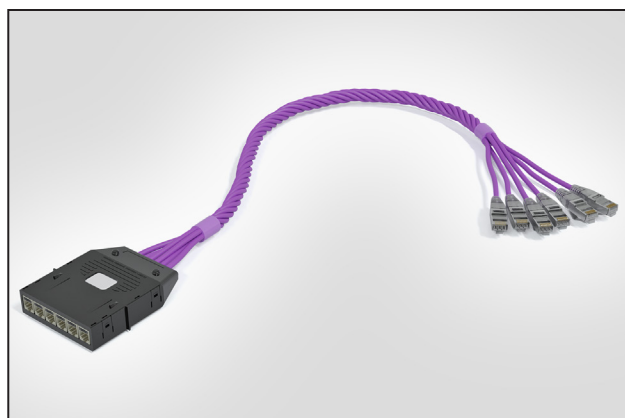
#### 6 Port Cassette to RJ45 Plug Trunk Cable - RN06G6A-CAPLXX

#### Application/Product Description

RapidNet is the industries original cassette based pre-terminated cabling system. The patented cassette is factory terminated and tested to the customers required length and configuration, allowing engineers onsite to 'plug and play' saving up to 75% on installation time. This makes RapidNet the perfect solution for mission critical applications and environments with perpetual moves, adds and changes.

The RapidNet CAT6A Shielded trunk cables offer 6 ports and are produced with our F/FTP CPR compliant cable.

RapidNet Cassette to Plug configuration Trunk cables are ideal for switch harnessing applications, or to directly connect to IoT / IP devices such as wireless access points (WAP) CCTV or smart lighting controls.



RapidNet Category 6A Cassette to RJ45 Plug.

#### Technical Data

Characteristics	Specification
Cable NVP	82%
Length Range	3m - 85m
Euroclass	Dca or Cca
Shield Construction	F/FTP
Sheath Colours	Violet
Cable OD	7.0mm (Dca) 7.5mm (Cca)
Packaging	Box: < 25m
	Reel: ≥ 25m
Produced in	Northampton, UK
Warranty	25 Year System*

\* For full warranty information please visit [www.htdata.co.uk/downloads/25-year-warranty](http://www.htdata.co.uk/downloads/25-year-warranty)



#### Features and Benefits

- Factory terminated (controlled environment)
- Produced with CPR Compliant F/FTP Cable
- Up to 75% reduced on-site installation time
- 100% tested to the latest industry standards
- 6 port patented plug and play cassette
- Full traceability
- Produced to your length requirements
- Reduces on-site waste from excessive packaging and cable reels.
- Full eco-system of RapidNet cable management and accessories

#### Standards

- BS EN 50173-1
- ISO/IEC 11901-1:2002
- ANSI/TIA/EIA 568-C.2
- ISO/IEC 11801-5
- ISO/IEC 22237-5
- EN 50173-5
- ANSI/TIA 942
- IEC 60332-1
- IEC 60754-2
- IEC 61034

#### Cable Performance Characteristics (Nominal)

Frequency (MHz)		4	250	500
Insertion Loss (dB/100m) Min.	Standard / Typical	3.8 / 3.6	34.3 / 31.9	45.3 / 41.8
NEXT (dB) Min.	Standard / Typical	75.0 / 100.0	59.3 / 91.4	54.8 / 86.9
PS-NEXT (db) Min.	Standard / Typical	75.0 / 100.0	56.3 / 88.4	51.8 / 83.9
ACR-F (dB/100m) Min.	Standard / Typical	66.0 / 91.2	30.0 / 75.7	24.0 / 72.1
PS ACR-F (dB/100m) Min.	Standard / Typical	63.0 / 88.2	27.0 / 75.5	21.0 / 69.1
Return Loss (db) Min.	Standard / Typical	23.0 / 28.0	17.3 / 22.3	17.3 / 22.3

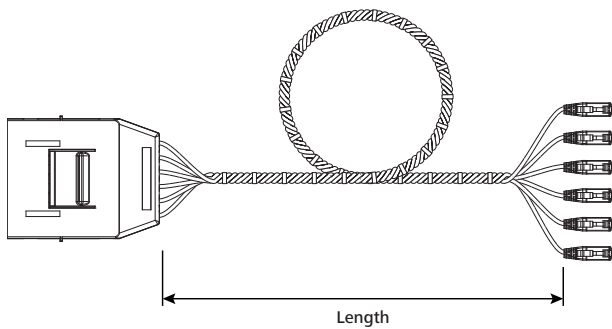
\*Typical values are for permanent link tests when using the complete HellermannTyton Data System.

### Cassette Specification

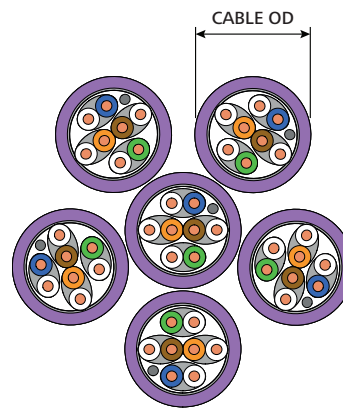
<b>Port Count</b>	6		
<b>Dimensions (mm)</b>	H	W	D
	31.0	107.0	130.0
<b>Outlet Style</b>	RJ45		
<b>RJ45 Jack Life</b>	Minimum Insertions 1000		

Cassette Materials		Jack Materials	
<b>Cassette Cover</b>	Polycarbonate ABS	<b>Modular Jack Housing</b>	Zinc Alloy
<b>Colour</b>	Black	<b>Colour</b>	Nickel
<b>Earth Plate</b>	Zinc Plated Steel	<b>Contacts</b>	Phosphor Bronze Nickel Plated with Selective Gold

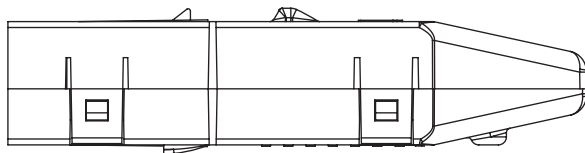
### Technical Diagrams



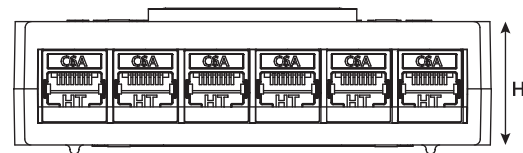
Preterminated assembly (top view)



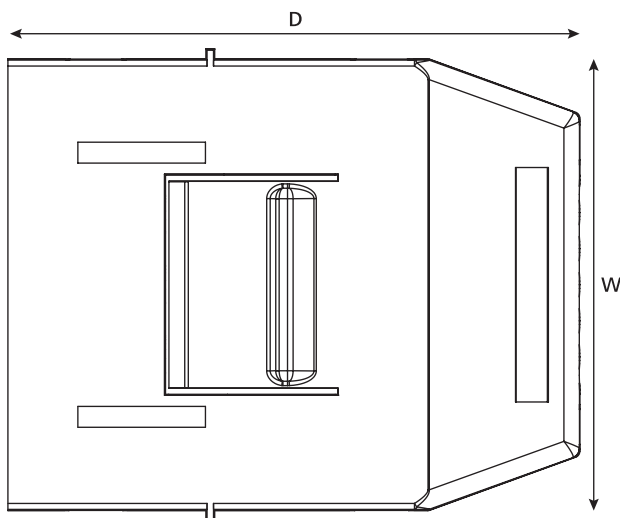
6 Port CAT6A F/FTP Bundle (cross section)



Cassette (side view)



Cassette (front view)



Cassette (top view)