

## RapidNet 6 Port Category 6A UTP

### Short Body Cassette to Short Body Cassette

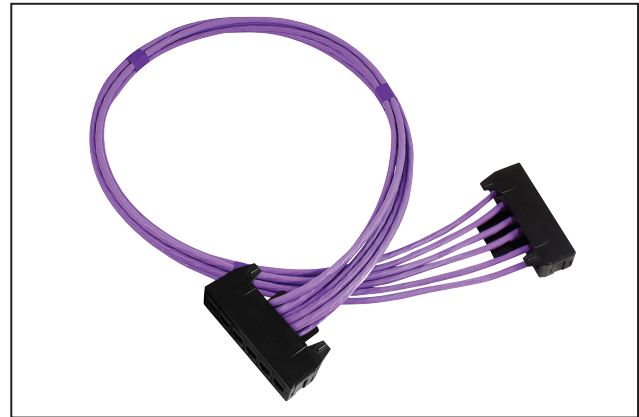
#### Application/Product Description

The HellermannTyton Category 6A UTP Short Body GST Cassette to Short Body GST Cassette is pre-terminated with 6 GST RJ45 ports within the cassette. Each cassette presents 6 GST RJ45 ports in one cassette with the loom being terminated with a cassette at each end.

The Category 6A RapidNet looms are designed and tested to support Primary (Campus), Secondary (Riser) and Tertiary (Horizontal) applications for 10Base-T (Ethernet), 100Base-T(Fast Ethernet), 1000Base-T(Gigabit Ethernet), 10GBase-T(10-Gigabit Ethernet), PoE and PoE+.

When used with HellermannTyton Category 6A RapidNet patch panels, outlets and patch leads the combined performance exceeds Category 6A/Class EA link and channel requirements.

RapidNet Category 6A looms are available in lengths from 5m to 90m.



RapidNet Category 6A UTP Cassette to Cassette

#### Cable Specification

Electrical Characteristics @ 20°C	Specification
DC Loop Resistance	≤9.38Ω/100m
Resistance Unbalance	≤5%
Insulation Resistance (500V)	≥100MΩ - 305m
Capacitance at 800Hz	Nom. 43nF/km
Capacitance Unbalance (pair to ground)	≤300pF/100m
Characteristic Impedance (1-100MHz)	(100 ± 15)Ω
Nominal Velocity of Propagation	Approx. 67%
Propagation Delay	≤534+36ns/(Freq), 1 - 500MHz
Delay Skew	≤45ns, 1 - 500MHz
Test Voltage (DC, 1 min) Core/Core	1000v

#### Cable and Cassette Standards

##### Cable

- BS EN 50173
- ISO 11801:2002 (inc. Amend. A1 & A2)
- ANSI/TIA/EIA 568-C.2
- IEC 61156-5
- BS EN 50288-10-1

##### Cable Sheath

- IEC 60332-1
- IEC 60754-2
- IEC 61034

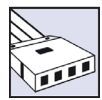
##### Category 6A Cassette

- ISO 11801:2002 (inc. Amend. A1 & A2)
- BS EN 50173
- ANSI/TIA/EIA 568-C.2

#### RapidNet Loom Performance Characteristics

Frequency (MHz)		1	250	500
Insertion Loss (dB/100m)	Spec	3.0	29.5	43.8
	Typical	0.4	6.3	9.5
NEXT (dB)	Spec	65.0	35.3	26.7
	Typical	92.2	49.6	40.4
ACR-N (dB)	Spec	62.0	5.8	-17.1
	Typical	91.8	43.3	30.9
Return Loss (dB)	Spec	19.1	10.0	8.0
	Typical	25.1	32.4	19.0
PS-NEXT (dB)	Spec	62.0	32.7	23.8
	Typical	86.6	43.9	33.6
PS ACR-N (dB)	Spec	59.0	3.2	-20.0
	Typical	86.2	37.5	24.1
ACR-F (dB/100m)	Spec	64.2	16.2	10.2
	Typical	87.5	44.5	34.3
PS ACR-F (dB/100m)	Spec	61.2	13.2	7.2
	Typical	80.1	37.3	27.1

\*Typical values are for permanent link tests when using the complete HellermannTyton Data System.

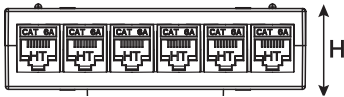


Cassette Specification

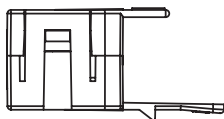
<b>Port Count</b>	6		
<b>Dimensions (mm)</b>	H	W	D
	27.0	102.0	60.0
<b>Outlet Style</b>	GST RJ45		
<b>RJ45 Jack Life</b>	Minimum Insertions 1000		

Cassette Materials		Jack Materials	
<b>Cassette Cover</b>	Polycarbonate ABS	<b>Modular Jack Housing</b>	Polybutylene
<b>Colour</b>	Black	<b>Contacts</b>	Copper Alloy/Selected Gold Plate

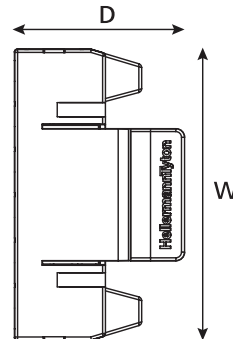
Technical Diagrams



Front view



Side view



Top view