

CAT6A Keystone Jack

Shielded

Application/Product Description

The HTC Series Category 6A Shielded Keystone Jack has been designed to support today's network infrastructure requirements including Ethernet 10BASE-T, 100BASE-T (fast Ethernet), 1000BASE-T (Gigabit Ethernet), 10GBASE-T (10 Gigabit Ethernet) Voice over IP (VoIP). With greater demand for PoE implementation the HTC Series CAT6A Keystone Jack has been configured to bolster today's PoE requirements, supporting the most up to date standard for PoE ++ (Type 4) as described in IEEE 802.3bt.

360° Shielding prevents alien crosstalk and helps to dissipate heat produced by PoE applications. Short body allows for use in more restrictive areas of installation. The tool-free design allows for fast on-site installation without the need for any specialized termination tool.

Features and Benefits

- Plastic Free Packaging
- Tool-Free Design
- Supports CAT6A 10G 500Mhz
- Supports PoE++ Type 4
- Shielded to prevent Alien Crosstalk
- 3rd party tested
- Short Jack length to support restrictive spaces

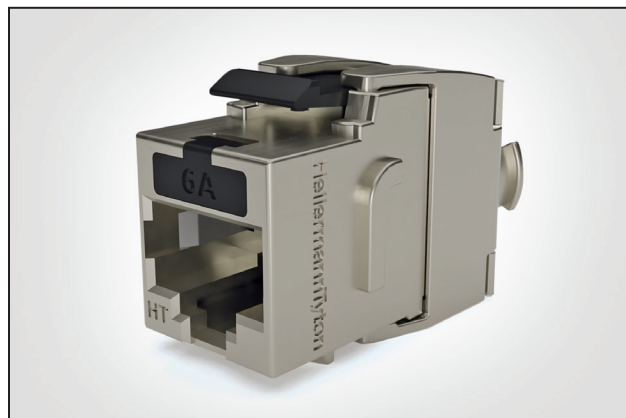
Standards Compliance

- ISO/IEC 11801-1 (CLASS Ea)
- ANSI/TIA-568.2-D (CAT6A)
- IEC 60603-7
- IEC 60512-99-002 - mating and un-mating under load
- IEEE 802.3bt PoE ++ - Type 1 (15.4 Watts) Type 2 (30 Watts), Type 3 (60 Watts), Type 4 (90 Watts)
- CiscoUPoE (60 Watts)
- EN 50173-1

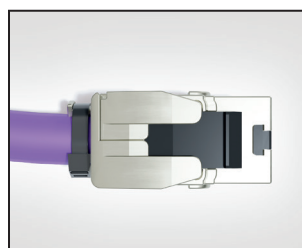
Technical Data

Electrical Specification	
Insulation Resistance	Minimum 500 MΩ
DC Current Rating	1.5 Amps
Input to Output DC Resistance	Maximum 100MΩ
Contact Resistance	Maximum 20MΩ
Voltage Proof (Contact to Contact)	1000 V AC
Voltage Proof (Contact to Shield)	1500 V DC

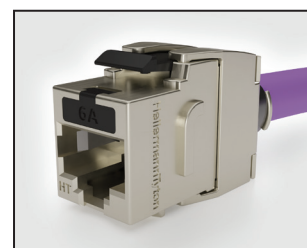
Environmental Specification	
Operating Temp	-10°C to 60°C
Storage Temp	-40°C to 68°C
Humidity	10% to 90% RH (non-condensing)



Category 6A Shielded Keystone Jack



Category 6A Shielded Keystone Jack (top view)



Category 6A Shielded Keystone Jack.

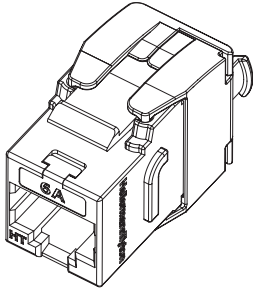
TYPE	Description
HTC-C6AS-KJ12	CAT6A Shielded Tool-Free Keystone Jack - Box of 12pcs

Compatible Panel	HTC-XXS-PPF241U/BK
-------------------------	--------------------

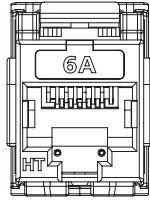
Physical Specification	
Insertion Life	Minimum 750 mating Cycles
Plug Retention Force	Minimum 11LBF
IDC Durability	Minimum 30 termination Cycles
Conductor	Solid 22-24 AWG
Connector Type	RJ-45 8P8C Plug

Material Specification			
Keystone Housing	Die-Cast Zinc Alloy		
Jack Contacts	Phosphor Bronze, 50u" Gold Plating		
IDC Terminals	Phosphor Bronze, tin plated		
Dimensions (mm)	W	D	H
	16	34	21

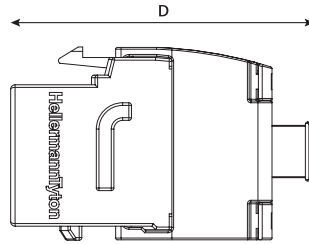
Technical Diagrams



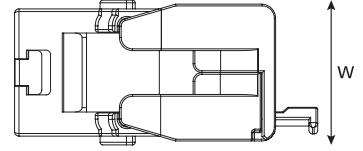
CAT6A Keystone Jack



Front view



Side view



Top view