

## RapidNet MTP Fibre Patch Panel

### 1U Integrated Rear Manager RNA6UXX-PB1UCN-XX.XX

#### Application/Product Description

RapidNet is the industries original cassette based pre-terminated cabling system. The patented cassette is factory terminated and tested to the customers required length and configuration, allowing engineers onsite to 'plug and play' saving up to 75% on installation time. This makes RapidNet the perfect solution for mission critical applications and environments with perpetual moves, adds and changes.

The rear cable management panel provides support and protection for MTP backbone and fibre cables. Compatible with the RapidNet direct terminated fibre solution, RapidNet MTP VHD or CAT6 UTP RapidNet Cassettes. A range of fixing points are provided in the rear of the panel to secure cables and provide strain relief for the MTP connectors and adapters. 25mm conduit can be used to support and protect cables from the panel to the horizontal cable routes. Multiple rear entry points are provided for the conduit tubing to enable maximum flexibility.

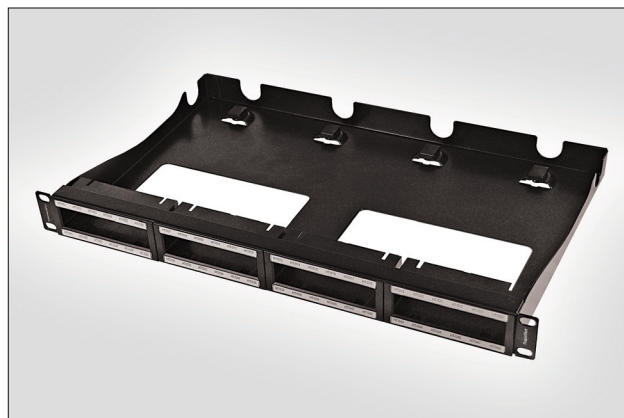
#### Technical Data

Characteristics	Specification
Material	1.8mm Mild Steel
Compatible Cassettes	MTP Fibre Cassettes
Rear Manager	Integrated
Shielded	Unshielded - Not suitable for Cat6A Cassettes
Blanks	RNBLANK
Packaging	Card Box
Visio Stencil	Yes - Contact HT
Produced in	Northampton, UK
Warranty	25 Year System*

\* For full warranty information please visit [www.htdata.co.uk/downloads/25-year-warranty](http://www.htdata.co.uk/downloads/25-year-warranty)

#### Features and Benefits

- Integrated rear manager to support high density cabling
- Labeling and port identification fields
- Up to 75% reduced on-site installation time
- Accepts 6 port CAT6 cassettes & Fibre Cassettes
- Quick release cassette method
- Optional rear manager available
- Blank cassette inserts available
- 1U 19" rack mountable
- Rear cable entry/fixing points



RapidNet 1U MTP Fibre Patch Panel.



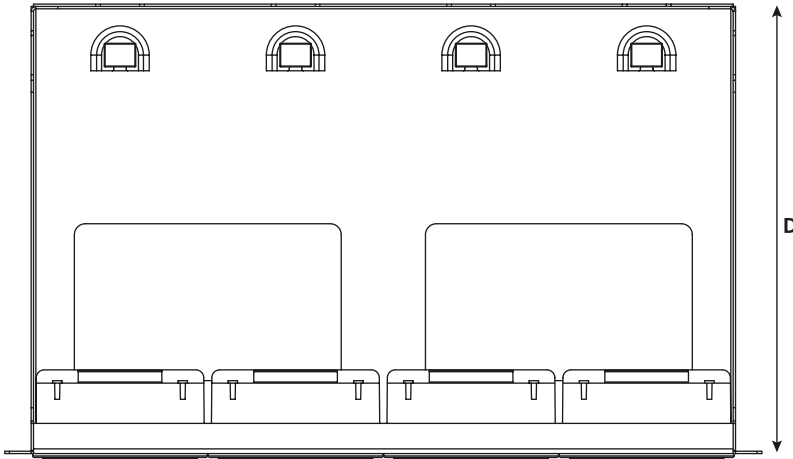
RapidNet 1U MTP Fibre Patch Panel loaded with Cassettes.

PANEL	U Size	Dimensions (mm)			Presentation	Copper Cassette	Count	Fibre Cassettes	Fibre Capacity			Rear Manager
		H	W	D					SC	LC	MTP	
RNA6UXX-PB1UCN-XX.XX	1U	44	482.5	289	Flat	6 Port Cassette	24	SC LC MTP	48	96	576	Integral



Technical Diagrams

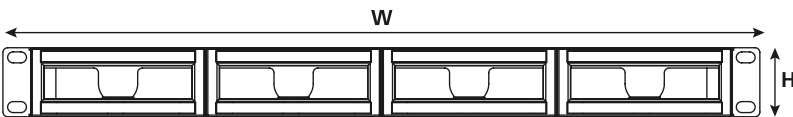
Part Code: RNA6UXX-PB1UCN-XX.XX



RapidNet MTP Fibre Patch Panel (top view)



RapidNet MTP Fibre Patch Panel (side view)



RapidNet MTP Fibre Patch Panel (front view)

Associated Products

See website for more information. Other configurations available.



**Fibre Cassettes**

SC/LC with second end options.



**Cat6 6 Port Cassettes**

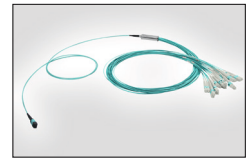
Available with second end options.



**Flexible Conduit**



**Cable Glands**



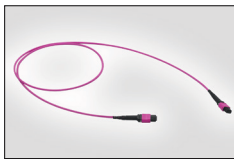
**MTP to LC Fan Outs**

Available OM4, OM3 and OS2.



**LC Patch Leads**

Available OM4, OM3 and OS2.



**MTP Truck Cables**

Available OM4, OM3 and OS2.