

LC and SC Fibre Adaptors

Quad, Duplex and Simplex

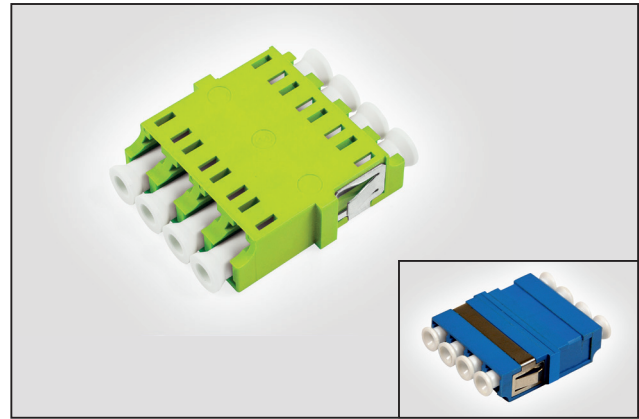
Application/Product Description

HellermannTyton fibre adaptors are designed and tested to support 10Base-T (Ethernet), 100Base-T (Fast Ethernet), 1000Base-T (Gigabit Ethernet) networks, telecom, datacom networks and for use in high speed metropolitan and access networks.

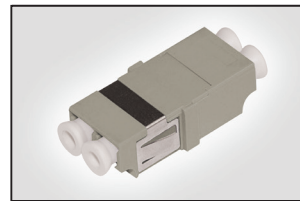
Adaptor Standards

Adaptor

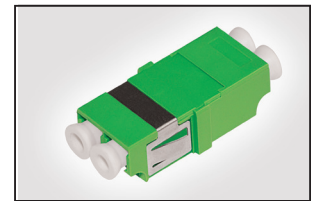
- IEC 61753-1
- IEC 61754
- GR-326 Core Issue 4
- ROHS Compliant



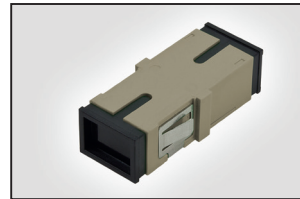
Multimode and Single Mode LC Quad Adaptors



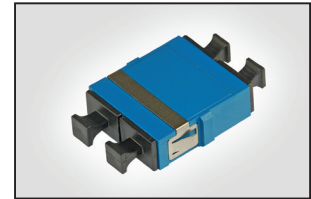
LC MM Duplex Adaptor



LC MM APC Duplex Adaptor



SC MM Simplex Adaptor



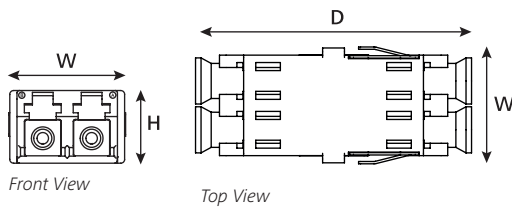
SC SM Duplex Adaptor

Adaptor Specification

Adaptor Type	LC		SC	
	Duplex	Quad	Simplex	Duplex
Housing Material	Polybutylene Terephthalate			
Sleeve Material	Phosphor Bronze	Zirconia	Zirconia	Phosphor Bronze
Insertion Loss (dB)	≤0.3	≤0.2	≤0.2	≤0.3
Sleeve/Ferrule Withdraw Force	200gf – 600gf			
Operating Temperature	-40°C to +75°C			

Technical Diagrams

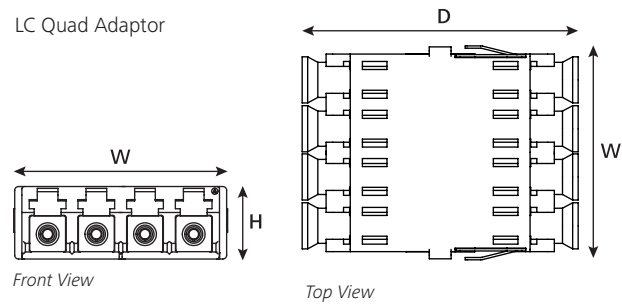
LC Duplex Adaptor



Front View

Side View

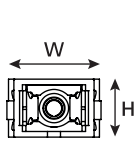
LC Quad Adaptor



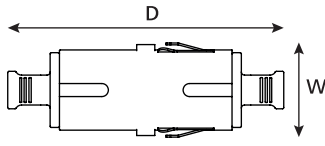
Front View

Top View

SC Simplex Adaptor

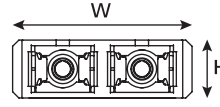


Front View

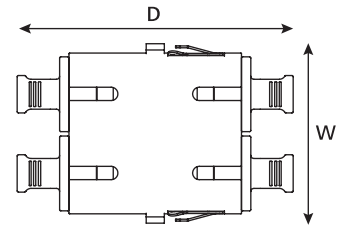


Top View

SC Duplex Adaptor



Front View



Top View