

U/UTP Stranded

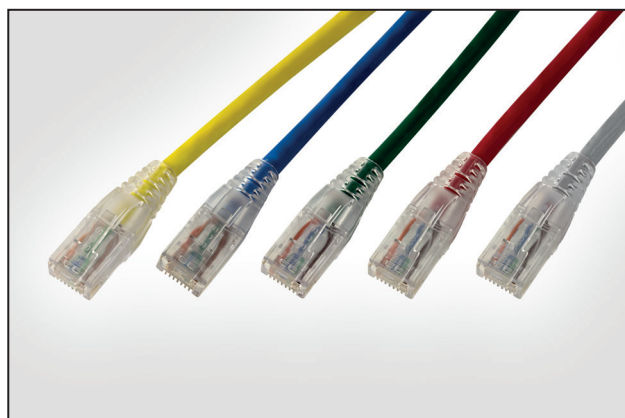
Patch Leads

Application/Product Description

HellermannTyton Category 6 unshielded patch leads are designed and tested to support Primary (Campus), Secondary (Riser) and Tertiary (Horizontal) applications for 10Base-T (Ethernet), 100Base-T (Fast Ethernet), 1000Base-T (Gigabit Ethernet), PoE and PoE+.

When used with HellermannTyton Category 6 unshielded cables, patch panels and outlets the combined performance exceeds Category 6/Class E link and channel requirements.

The patch leads are supplied standard 1m, 2m, 3m, 5m lengths in blue, green, grey, red and yellow, other lengths and colours are available on request.



RJ45NGB Cat6 LS0H U/UTP Patch Leads in various colours.

Technical Data

Electrical Characteristics @ 20°C	Specification
DC Loop Resistance	140Ω/km
Resistance Unbalance	5%
Insulation Resistance	5000MΩ/km
Capacitance Unbalance (pair to ground)	≤330pF/100m
Delay Skew	45ns/100m
NVP (Nominal Velocity of Propagation)	65%



RJ45NGB in black.

Cable Standards

Cable

- ISO 11801:2002 (inc. Amend. A1 & A2)
- ANSI/TIA/EIA 568-C.2
- IEC 61156-6

Cable Sheath

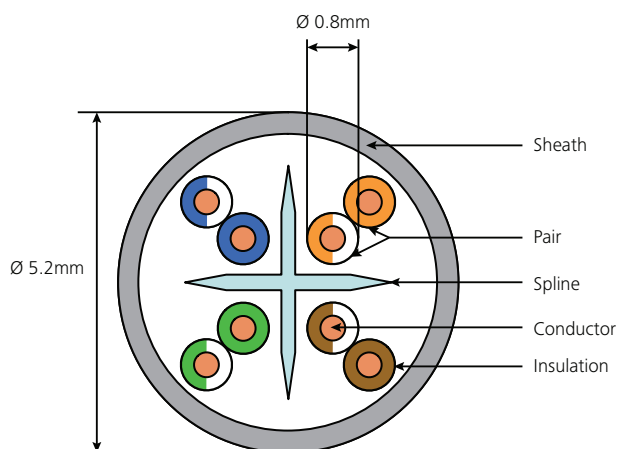
- IEC 60332-1

Performance Characteristics

Frequency (MHz)		1	100	250
NEXT (dB)	Spec	65.0	46.4	38.8
	Typical	95.9	59.4	49.5
Return Loss (dB)	Spec	19.8	18.0	14.0
	Typical	38.5	27.6	28.1

*Typical values based on a 2m patch lead.

Cable Construction



Product Performance	
Core	
Core Conductor:	26 AWG Stranded Copper Wire
Conductor Diameter:	0.16±0.02mm
Insulation:	HDPE
Insulation Diameter:	0.80±0.05mm
Twisting:	2 cores to the pair
Pair Colour:	Blue-White/Blue, Orange-White/Orange, Green-White/Green, Brown-White/Brown
Final Assembly	
Cable	4 pairs to the core
Sheath	LSOH Blue, Green, Grey, Red, Yellow
Outer Diameter	5.2mm ± 0.3mm
Mechanical and Environmental	
Temp. Operation	-20°C to +75°C
Min. Bend Radius	
During Installation:	8 x outer diameter
During Operation:	12 x outer diameter
Max. Tensile Force:	
During Installation	110N
Packaged Weight	42kg/km