



LAN Lock Units

3 Port and 6 Port

Application/Product Description

Designed for use in public areas where network security is a concern. Available in 3 or 6 Port version. The casing is moulded from ABS and will accept either UTP or FTP patch leads.



3 Port and 6 Port LAN Lock Units

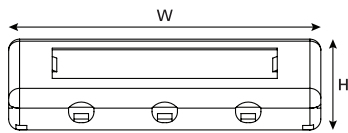
Technical Data

Style	3 Port			6 Port		
Port Count	3			6		
Dimensions (mm)	H	W	D	H	W	D
	25.0	86.0	120.0	25.0	147.0	160.0
Weight (kg)	58.6			120.0		
Materials	ABS					
Colour	White					

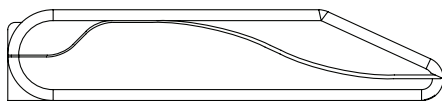
*Suitable for use with Category 6 and Category 5e Lan Lock Modules

Technical Diagrams

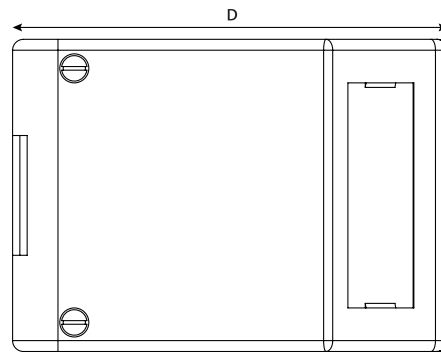
3 Port



Front view

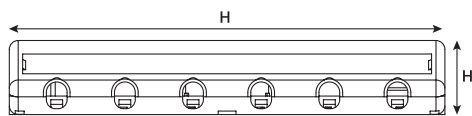


Side view

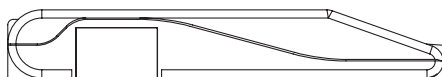


Top view

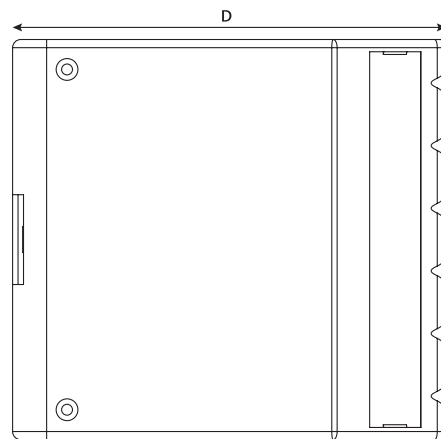
6 Port



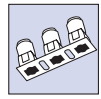
Front view



Side view



Top view

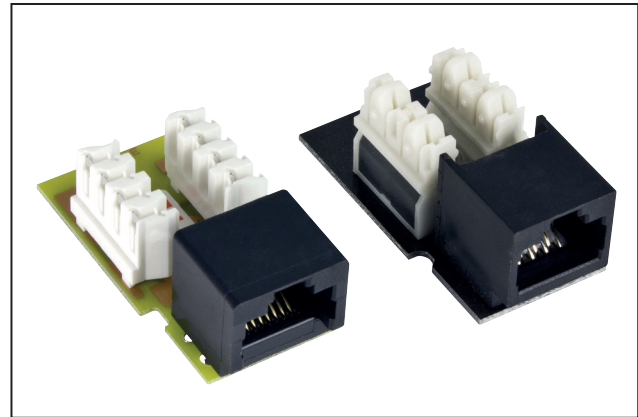


LAN Lock Category 5e and Category 6

Modules

Application/Product Description

Category 5e and Category 6 LAN Lock modules for use with the HellermannTyton LAN Lock units.



Category 5e and Category 6 LAN Lock Modules

Performance Characteristics

Frequency (MHz)		Category 6			Category 5e		
		1	100	250	1	10	100
Insertion Loss	Spec	3.0	18.6	31.1	3.0	6.2	21.0
	Typical	1.6	16.8	27.6	1.9	5.3	17.0
NEXT (dB)	Spec	65.0	41.8	35.3	60.0	48.5	32.3
	Typical	87.5	60.7	49.7	81.4	64.8	45.3
ACR-N (dB)	Spec	62.0	23.3	4.2	57.0	42.3	11.3
	Typical	85.8	44.0	22.1	79.5	59.5	28.3
Return Loss (dB)	Spec	19.1	14.0	10.0	19.0	19.0	12.0
	Typical	27.8	27.6	19.0	27.1	32.8	25.8
PS NEXT (dB)	Spec	62.0	39.3	32.7	57.0	45.5	29.3
	Typical	81.4	54.8	44.1	75.6	59.6	39.3
PS ACR-N (dB)	Spec	59.0	20.7	1.6	54.0	39.3	8.3
	Typical	79.7	37.9	16.6	73.6	54.3	22.2
ACR-F (dB)	Spec	64.2	24.2	16.2	58.6	38.6	18.6
	Typical	79.9	44.5	36.0	79.0	61.7	41.5
PS ACR-F (dB)	Spec	61.2	21.2	13.2	55.6	35.6	15.6
	Typical	74.7	38.7	30.0	72.6	55.3	35.0

*Performance data is for the LAN Lock unit fitted with HellermannTyton Category 5e and Category 6 modules.