



### MDU - S4

#### Fibre Optic External/Internal Enclosure

#### Application Information

The HellermannTyton S4 series of wall mountable enclosures are suitable for both internal and external applications and have been developed for use within the last mile of the FTTX network.

The enclosure has been designed to accommodate the HellermannTyton IR Fibre Management system and offers the adaptability of point to multi point (P2MP) or point to point (P2P) configuration.

The enclosure can be supplied pre-connectorised with up to 24x LC duplex adaptors (48 Fibres or 24x SC simplex adaptors (24 fibres). A splice only configuration can offer up to 240 fibres.

#### Product Description

The enclosure can be configured the HellermannTyton angled IR Fibre Management System which can accommodate a maximum of 10 x SE-IR MKII trays, which offer up to 24 x 3A splices double stacked or 20 x SC-B MKII trays which offer up to 12 x 3A splices.

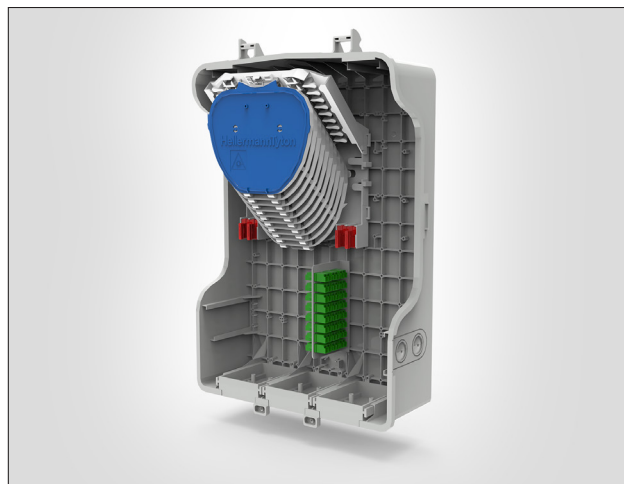
The S4 is compatible with 250µm, 600µm and 900µm fibre.

The enclosure is 470mm x 307mm x 147mm (H x W x D) and manufactured in light grey (RAL 7035), UV stable ABS (Acrylonitrile Butadiene Styrene) and has an IP54, IK08 and V0 rating.

Features Drop cable entry via the HellermannTyton 24 way drop seal. Each entry point will accept 7mm OD. Backbone cable entry via the loop through gland seal which accepts 3-14mm OD cable.

#### Features and Benefits:

- IR Fibre Management System
- 10 x SE-IR MKII or 20 x SC-B MKII trays
- 48 Fibres with LC Duplex
- 24 Fibres with SC Simplex
- 240 Fibres splice only
- Loop Storage Management
- IP54/IK08 Rating
- V0 Rating
- 24 way drop seal cable entry
- Works with 250µm, 600µm, 900µm fibre
- Cable anchor brackets
- Optional rear storage mounting bracket
- Splitter configurations available



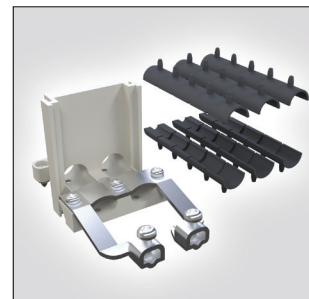
MDU - S4 Internal view showing 10 SE-IR MKII trays and LC Quad Adaptor plate.



MDU - S4 with rear storage bracket.



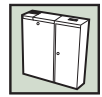
External view.



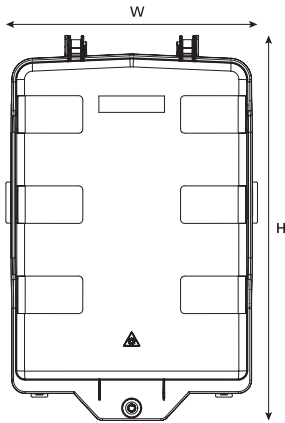
Range of seals available.

#### Technical Data

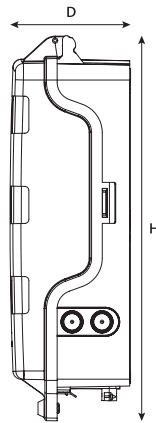
Dimensions - w/o bracket (mm)	H	W	D
	470	307	147
Compatible Fibre	<ul style="list-style-type: none"> <li>• 250µm</li> <li>• 600µm</li> <li>• 900µm</li> </ul>		
Tray Quantity & Type	<ul style="list-style-type: none"> <li>• 10x SE-IR MKII</li> <li>• 20 X SC-B MKII</li> </ul>		
Tray Quantity & Type	IP54		
IP Rating	IK08		



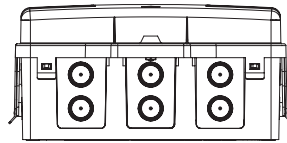
### Technical Diagrams



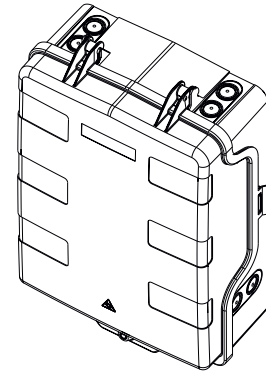
Front View



Side View



Base View



External View

### Part Numbers

TYPE	Tray Type	Tray Quantity	Splice Capacity	Splice Protector Type	Connector Type	Basket Size	Article-No.
MDU-S4	-	-	-	-	-	-	857-02242
MDU-S4-BWA	SE MKII	10	240	3A	-	Small	857-02243
MDU-S4-XWA	SE MKII				-	-	857-02244
MDU-S4-BAN	SC-B MKII	20	-		Small	857-02247	
MDU-S4-XAN	SC-B MKII		-		-	857-02248	
MDU-S4-BWA-CP24AA1	SE MKII	10	48		LC/APC	Small	857-02251
MDU-S4-XWA-CP24AA1	SE MKII		-		-	857-02252	
MDU-S4-BWA-CP24SA1	SE MKII		24		SC/PC	Small	857-02253
MDU-S4-XWA-CP24SA1	SE MKII		-		-	857-02254	
MDU-S4-BAN-CP24AA1	SC-B MKII	20	48		LC/APC	Small	857-02255
MDU-S4-XAN-CP24AA1	SC-B MKII		-		-	857-02256	
MDU-S4-BAN-CP24SA1	SC-B MKII		24		SC/PC	Small	857-02257
MDU-S4-XAN-CP24SA1	SC-B MKII		-		-	857-02258	

All dimensions in mm. Subject to technical changes.