

### SP-I - SpeedPipe Indoor

LFH / ISP / MDU / SDU

#### Application/Product Description

HellermannTyton's indoor ducted solutions (SP-I) have been specially designed for an in-building air blown application. Manufactured from special low smoke fire hazard material, the SP-I products range conforms to international standards.

The SP-I is available in a variety of different sizes to suit different air blown fibre cables. SpeedPipe Indoor duct is complimented with a range of in-house manufactured connecting and sealing elements to offer a fully engineered, end-to-end solution.

#### Features and benefits

- SpeedPipe Indoor duct and fittings are manufactured in-house from the same material
- All common sizes available as an end-to-end solution
- Gas and water tight to 15 Bar
- High dimensional tolerances and low ovality for superior blowing performance
- Suitable for push and pull installations



SP-I SpeedPipe Indoor.

#### Meets the following Standards:

- IEC 61386-22 Self-extinguishing, temperature, compression and impact strength
- IEC 60684-2 Absence of halogens
- IEC 61034-2 Low smoke density
- IEC 60332-1-2 Flame propagation, cables
- DIN EN 13501-1 Building products standards
- UL2024 Riser rating

### ES - Indoor LFH End Caps

Indoor / LFH / Push Fit

#### Features and benefits

- No counter bore
- High quality well engineered
- Pressure tested to 15 bar and beyond
- Gas and water tight to 0.5 bar
- Low Fire Hazard (LFH)
- Easy to install and disconnect
- Push fit application
- No specialist tool required
- No adhesive required

#### Technical Description

HellermannTyton's in-house range of indoor LHF end caps (ES) are suitable for internal air blown cable application and provide a perfect fit to the corresponding LFH indoor SpeedPipe duct. The end

caps ES are used for closing SpeedPipe against dirt, gas and water up to 0.5 bar and beyond. They are resistant to tensile stressing and can be easily and installed and disengage.



ES Indoor LFH End Caps.

### DSM - Indoor LFH Straight Connector

Indoor / LFH / Push Fit

#### Features and benefits

- No counter bore
- High quality well engineered
- Pressure tested to 15 bar and beyond
- Gas and water tight to 0.5 bar
- Low Fire Hazard (LFH)
- Easy to install and disconnect
- Push fit application
- No specialist tool required
- No adhesive required

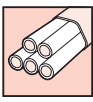
#### Technical Description

HellermannTyton's in-house range of indoor LHF straight connectors (DSM) are suitable for internal air blown cable applications and provide a perfect fit to the corresponding LFH indoor duct. The internal construction of the straight connector ensures both duct ends are connected, allowing a

smooth transition from one duct end to another as the fibre cable travels through. The LFH DSM's are available in variety of different size's to suit the corresponding indoor LFH duct.



DSM - Indoor LFH Straight Connector.



#### EZA-t - Indoor Gas/Cable Seal

Indoor / LFH / Compression Seal

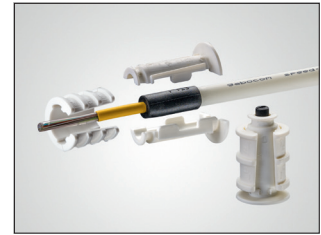
##### Features and benefits

- Gas and water tight up to 0.5 bar
- Burst test 10 bar
- Suitable for sealing empty and occupied duct
- Reusable
- Quick and easy install
- Compression seal
- No specialist tool required
- No adhesive required

##### Technical Description

The divisible indoor LFH EZA-t cable/gas seal has been designed as a duct and cable seal with a safety function all in one product. It seals all cables sizes within a microduct to the same standards. The EZA-t is suitable for indoor air blown fibre

cable applications, can be easily installed and is reusable. The indoor LFH EZA-t seals are available in a variety of different sizes each supporting different internal seals for different cable sizes.



EZA-t indoor Gas/Cable seal.

#### EBM-GS - Indoor Inline Gas / Cable Seal

Indoor / LFH / Compression Seal

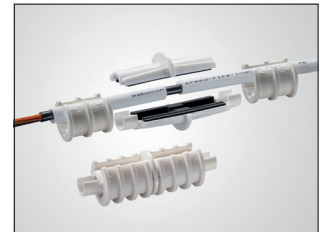
##### Features and benefits

- Seals all cable sizes within the microduct
- Gas and water tight up to 0.5 bar
- Quick and simple to install
- Compression seal
- No specialist tool required
- No adhesive required

##### Technical Description

The divisible indoor LFH EBM-GS seal has been designed to gas seal a fibre cable transitioning between two open end ducts without the need of an external enclosure. The indoor LFH EBM-GS is

suitable for indoor applications and can be easily installed. The EBM-GS is available in variety of different size's to suit the corresponding indoor LFH ducts.



EBM-GS Indoor Inline Gas / Cable Seal.

#### KmR - Indoor End Cap and Marker

Indoor / LFH / Push Fit / 2 in 1

##### Features and benefits

- Seals and identifies in one product
- Gas and water tight up to 0.5 bar
- Push Fit application
- No specialist tool required
- No adhesive required

##### Technical Description

The indoor LFH KmR was designed to enable network operator to seal off an open-ended duct against dirt, gas and water, while acting as a marker label. The indoor LFH KmR is suitable for

indoor blown fibre optical cable applications and can be easily installed. KmR's are available in variety of different size's to suit the corresponding indoor LFH ducts.



KmR Indoor End Cap and Marker.

#### IB Indoor Bend Managers

Indoor / LFH

##### Features and benefits

- 90 degree manager
- Stackable
- Kink prevention

##### Technical Description

The indoor LFH Indoor Bend manager has been designed to safely guide LFH indoor SpeedPipe round 90-degree bends preventing the indoor

duct from kinking. The indoor bend managers are stackable enabling multiple indoor LFH SpeedPipes to be guided round tight corners.



IB Indoor bends managers.