



CFN Mounting Brackets

Wall / Pole and Mobra Kits

Application Information

The HellermannTyton mounting bracket kits have been designed to allow the CFN closure to be mounted in a pit using a Mobra Pit Arm (MB-CFN-MOBRA-BRKT) or onto a Wall or Pole (MB-CFN-PWB-001).

The bracket can be placed in any of the 3 mounting positions on the base of the CFNIR. This allows the cover to be removed and the closure to be worked on whilst in situ.

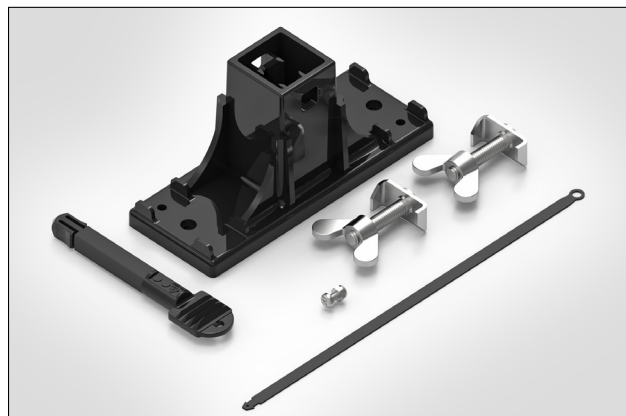
The bracket is manufactured from polypropylene and the simple design makes it quick and easy to install.

Features & Benefits

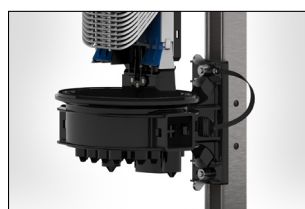
- Simple design, easy to install
- Manufactured from polypropylene
- Cover can be removed, allowing the closure to be worked on whilst in situ

Technical Data

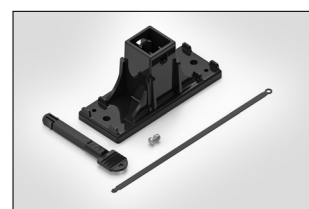
Part Number	Dimensions (mm)		
	D	W	H
MB-CFN-PWB-001	79	62	160
MB-CFN-MOBRA-BRKT			
Material	Polypropylene		



CFN Mobra Mounting Bracket.

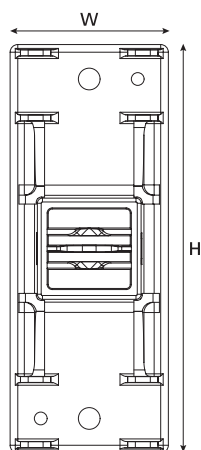


CFN Mobra Mounting Bracket (detail).

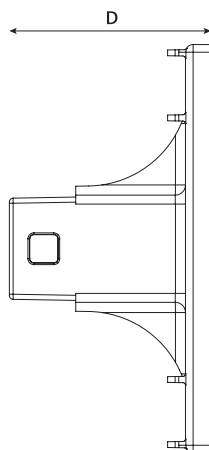


CFN Wall / Pole Mounting Bracket.

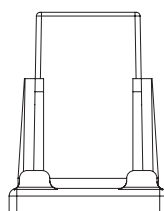
Technical Diagrams



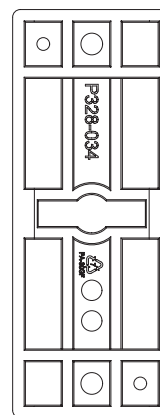
Mounting Bracket
(front view)



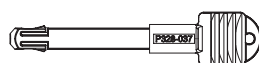
Mounting Bracket
(side view)



Mounting Bracket
(top view)



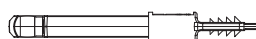
Mounting Bracket
(back view)



Lock Pin (front view)



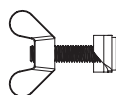
Lock Pin (side view)



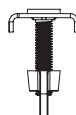
Lock Pin (top view)



Mobra Arm Kit (front view)



Mobra Arm Kit (side view)



Mobra Arm Kit (top view)



View Installation Manual