



- Reduce Installation Time By Up To 85%
- High Density, Space Saving Cassette
- Supports 'To The Desk' Installations

Product Description

With the ever increasing demands for space within cabinets and locations and to help maintain RapidNet as the technology leader in the market we have developed a high density RapidNet loom, specifically aimed at the data centre environment but suitable for all cabinet to cabinet applications.

RapidNet from HellermannTyton is the unique, pre-terminated and pre-tested solution that offers uncompromised performance and quality.

RapidNet can reduce installation time by up to 85% and is designed to meet the exacting standards of mission critical installations where network down time and poor systems performance is not an option.

The Cassette to Pod option is designed to support any 'to the desk' installation in various commercial environments including offices, trading floors and schools.

The Pod can be mounted to the desk, snapped directly into a floor box aperture or used beneath a railed floor on a consolidation point or similar configuration.

The 6 Port RapidNet Pod is manufactured with either 2 CAT6 or 2 CAT5E Triple Alpha Snap Outlets, providing a maximum of 6 ports per pod.

The 6 core bundled cable have been specially designed to eliminate potential alien cross talk issues and uses a clear tape to reduce the bundle, ensuring a high quality, well managed installation.

The 12 Port Cassette to Pod solution is available in CAT6 and CAT5E standards providing quality and performance for all applications.

Features and Benefits

- Exceeds all ISO/IEC 11801 and ANSI/TIA/EIA 568-C.2 CAT6 and CAT5E performance standards
- Factory pre-terminated and tested
- Reduce installation times by up to 85%
- Manufactured to exacting ISO 9001 quality standards
- RapidNet offers flexibility and choice
- RoHS compliant - lead free
- Backward compatible with Cat5E, Cat5
- Labelling fields for each port

Product Description	Ordering Code	UNS Number
RapidNet 12 port loom cassette to Pod – CAT6	RN12UC6-CAPOXX-XX.XM	Available on Request
RapidNet 12 port loom cassette to Pod – CAT5E	RN12UC5E-CAPOXX-XX.XM	Available on Request

Technical Description

The RapidNet Pod can be used as a consolidation point under the floor or within a ceiling void adding more flexibility to any network infrastructure.

Robust and attractive, the white ABS plastic pod is designed to clip into standard floor boxes via a suitable floor box mounting plate. The rounded edges alleviate snagging during the pulling and fixing stages of an installation. For protection during delivery, the pod is inserted within the cable reel and up to 5 metres of the cable can be protected by a black copec sleeve (on request).

During installation, the Pod can be slipped off the reel ready to be pulled into position. Designed to accommodate up to 12 shuttered outlets, the pods can be split into four or six looms from the main RapidNet cable with four or six outlets in each pod.

All RapidNet Cat6 and Cat5E cables are made with LSOH material, complying with the latest European Fire Ratings.

RapidNet terminations are tested to exceed all ISO/IEC 11801 and ANSI/TIA/EIA 568-C.2 Cat6 and Cat5E standards.

Dimensions and Product Construction Specification

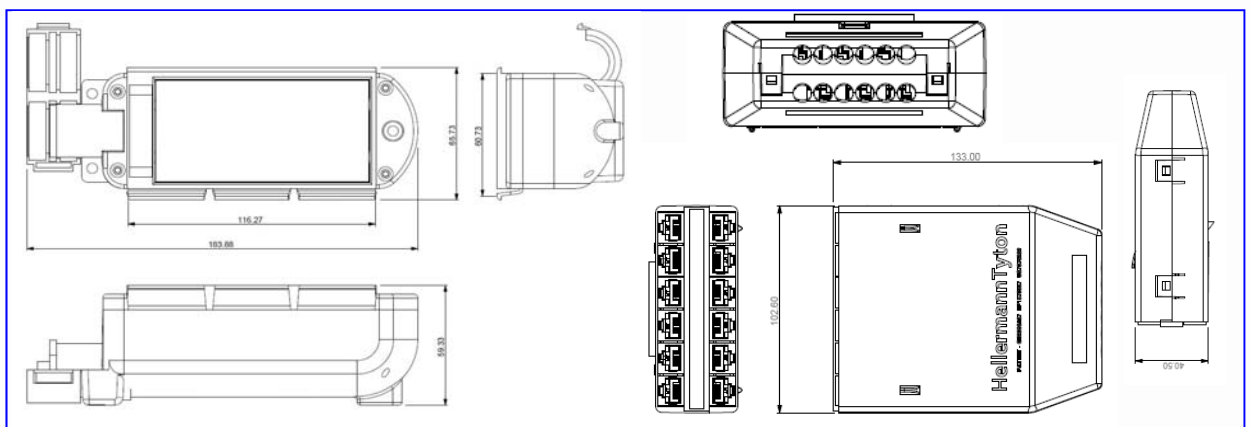
Ordering Code	Height	Width	Depth
RN12UC6-CAPOXX-XX.XM	40.50mm	102.60mm	133.00mm

- Jack life min. 1000 insertions
- Cassette material - PC/ABS
- Disaster Recovery - Terminated and ready for use
- Installation time saving of up to 85%
- Communications Room - Cabinet to Cabinet
- Covered by UK Patent 2398437, EP Patent 1570557, US Patent 7375282
- Sporting Events - Re-usable for different events
- Business As Usual Refurbishment - 5pm - 9am after hours working
- Under Floor and Ceiling Voids - Cabinet to Consolidation Point

Applications Supported

The RapidNet CAT6 solutions are designed to support any voice and data cabling system that is capable of running over their respective systems and are backwards compatible with existing CAT5E, CAT5 and voice network infrastructure.

Technical Drawings

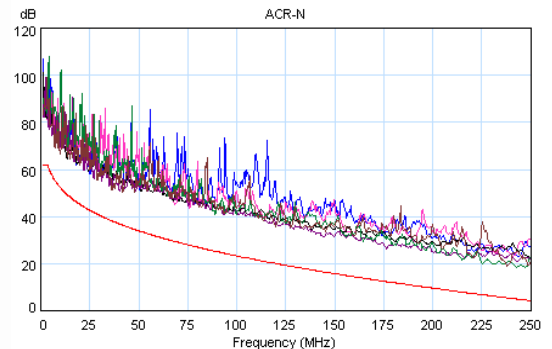
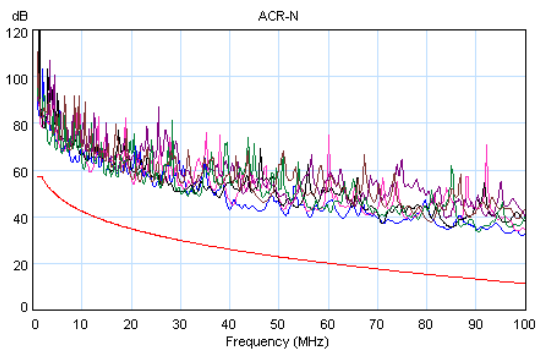
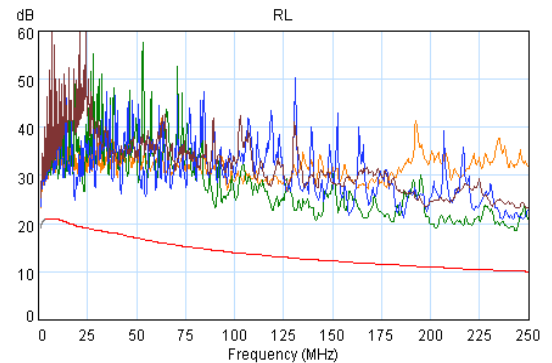
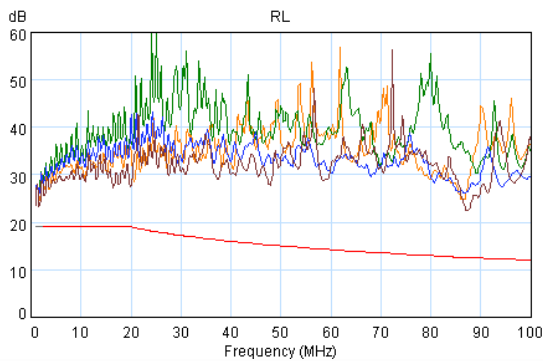
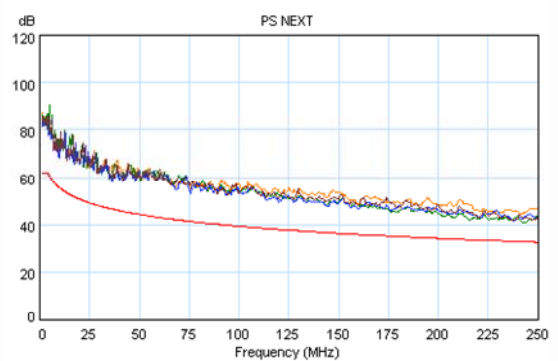
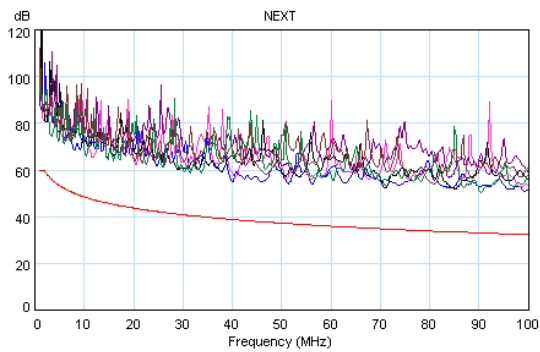


Connecting Hardware Test

Tested from: 1 MHz
 Tested to: 100 MHz
 Standard: ISO/IEC 11801 and
 ANSI/TIA/EIA 568-C.2
 Limits: Cat5E - Connector

Connecting Hardware Test

Tested from: 1 MHz
 Tested to: 250 MHz
 Standard: ISO/IEC 11801 and
 ANSI/TIA/EIA 568-C.2
 Limits: Cat6 - Connector



Tel: +44 (0) 1604 707420
 Web: www.htdata.co.uk
 Email: sales@htdata.co.uk