



- High Quality, High Performance Panel

- Dual Labelling Fields

- Rack Snaps as standard

### Product Description

The Global Cat6 range of patch panels offer exceptional performance in both the 24 ports 1U panel and the 48 ports 2U panel.

Each panel is constructed of 6 modular units, each offering 4 RJ45 ports. The panel can be supplied partially loaded to meet the exact requirements of the application, giving a cost effective solution.

The Global panel is available with rear cable management and Rack Snaps. The Global panel offers 2 labelling fields as standard with a magnifying lens for clear identification.

### Features and Benefits

- Customised product facia available
- Manufactured to exacting ISO 9001 quality standards
- Exceeds all ISO/IEC 11801 and ANSI/TIA/EIA 568-C.2 Cat6 performance standards
- Can be supplied totally or partially loaded
- Snap on aluminium rear cable management also available
- Push on label system (label software also available)
- Available from 24 ports in 1U to 96 ports in 4U configurations
- Accepts Krone style punch down tools
- RoHS compliant - lead free
- 568A or 568B wiring options
- Backward compatible with Cat5E and Cat5

Product Description	Ordering Code	UNS Number
Global RJ45 - Cat6 Patch Panel 1U	1/2408IDCG6/BK	853-45004
Global RJ45 - Cat6 Patch Panel 2U	2/4808IDCG6/BK	853-45009

### Technical Description

Available in standard 1U 24 ports and 2U 48 ports, the Global panel range offers quality, performance and value.

Tested to exceed all Exceeds all ISO/IEC 11801 and ANSI/TIA/EIA 568-C.2 Cat6 performance standards, the Global patch panel offers backward compatibility with Cat5E, Cat5 and voice products.

The Jack presentation is a 4 way modular PCB assembly which can be removed and replaced if required. In addition, the panel can be supplied partially loaded in a 4, 8, 12, 16 or 20 jack presentation.

The Global panel is supplied with a comprehensive colour and numbering label on the rear modules to ensure error free terminations.

The 'Alpha Label' software package, available for download at [www.htdata.co.uk](http://www.htdata.co.uk) enables straight forward port labelling.

### Dimensions and Product Construction Specification

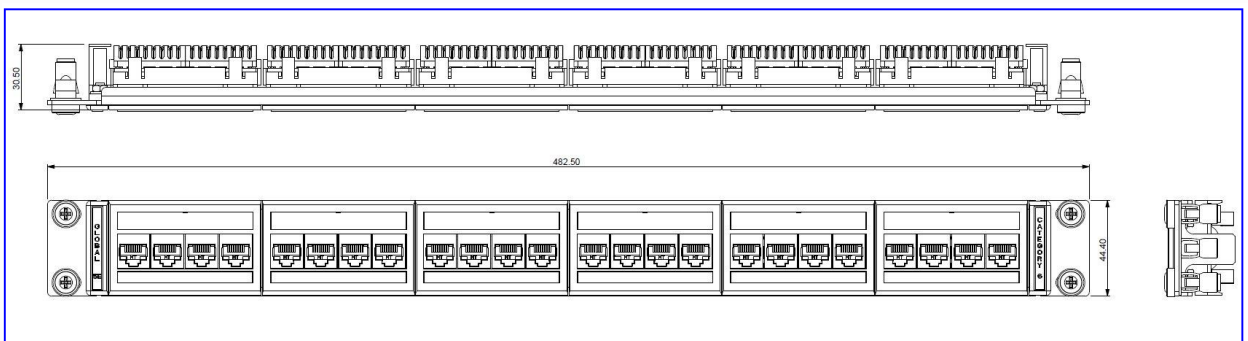
Ordering Code	Height	Depth	Weight (Approx)
1/2408IDCG6/BK	45.00mm	33.00mm	0.7kg
2/4808IDCG6/BK	89.00mm	33.00mm	1.0kg

- Jack life min. 1000 insertions
- Wire gauge 22-26 AWG
- IDC life up to 50 re-terminations
- Max. of two wires per contact (same gauge)

### Applications Supported

The Cat6 Global panel is designed to support any data or voice protocol that is capable of running over a Cat6 cabling system and is backwards compatible with existing Cat5E, Cat5 and voice network infrastructure.

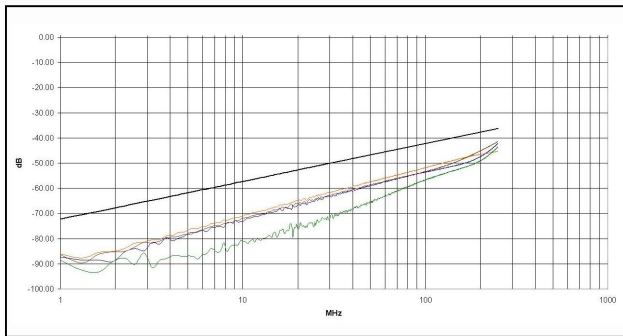
### Technical Drawings



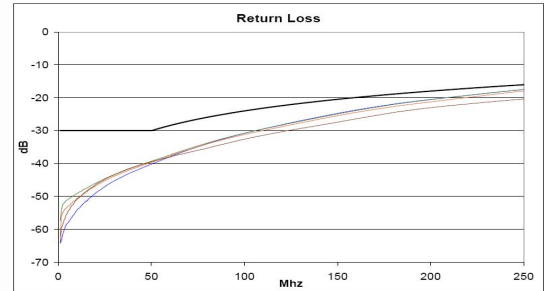
**Connecting Hardware Test  
(Patch Panel only)**

Tested from: 1 MHz  
 Tested to: 250 MHz  
 Standard: ISO/IEC 11801 and ANSI/TIA/EIA 568-C.2  
 Limits: Cat6 - Connector

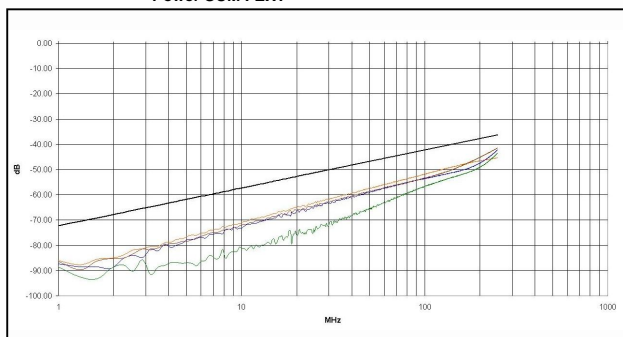
Power SUM NEXT



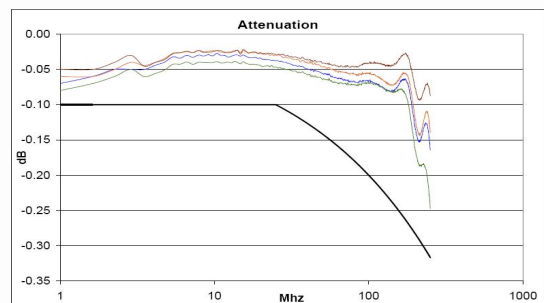
Return Loss



Power SUM FEXT



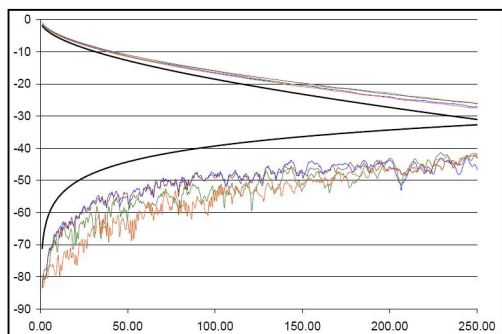
Attenuation



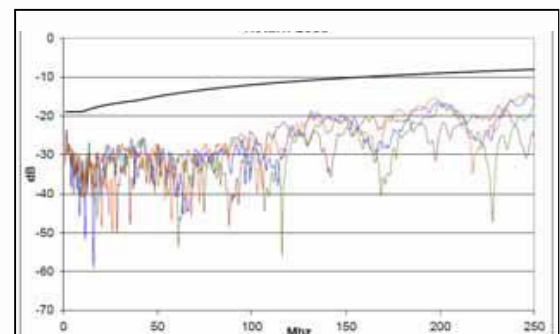
**Channel Test  
(Patch Cord, Patch Panel, Cable, Outlet)**

Tested from: 1 MHz  
 Tested to: 250 MHz  
 Standard: ISO/IEC 11801 and ANSI/TIA/EIA 568-C.2  
 Limits: Cat6 - Channel

Channel PS NEXT & Attenuation



Channel Return Loss



Tel: +44 (0) 1604 707420  
 Web: www.htdata.co.uk  
 Email: sales@htdata.co.uk