

# Data Centre Solutions

Better Technology through Innovation

**MADE TO CONNECT**

# Welcome to HellermannTyton

## We are Made to Connect

HellermannTyton is an established leader in the design, development and manufacture of innovative data centre infrastructure solutions as well as internal and external copper and fibre networks.

We pride ourselves on being a leading solutions provider, offering quality end to end network systems, industry and technical expertise and first-class customer service and support.

## Extensive Range

Our extensive product range covers Pre-terminated fibre, Cat6A and Cat6 solutions as well as fibre raceway duct, server cabinets and a comprehensive range of accessories including rack power distribution.

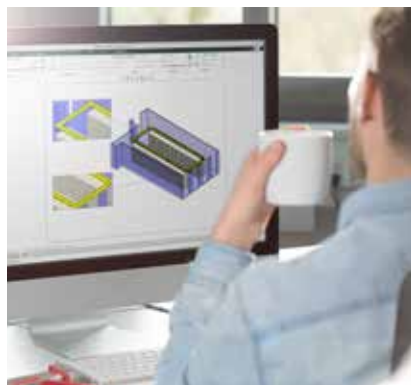
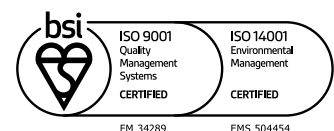
Our new RapidNet ULTRA system delivers pre-terminated fibre in a high capacity, high performance format, designed for data centres of today and in the future.

### Environmental Responsibility

For decades HellermannTyton has been working hard to reduce and remove single use plastic from its product packaging, using recycled and recyclable material where possible.

HellermannTyton consider the environmental implications of our products at an early stage in the design and development process to ensure that their environmental impact is minimised throughout their life cycle from manufacture, through use and ultimately on disposal. This includes considering the materials we use, the way the product will be manufactured and even how the product will be disassembled at the end of its useful life to facilitate recycling.

We are proud to be a trusted British manufacturer and take our environmental responsibility seriously.





## In this Brochure...

- RapidNet ULTRA12 and ULTRA8 cassettes
- RapidNet ULTRA fibre assemblies and housing
- GigaDuct Fibre Raceway
- Data Centre Racks and Cabinets and accessories
- Rack Power Distribution

## Selecting Excellence

Selecting HellermannTyton for your data centre infrastructure gives you peace of mind, knowing that the system can be installed easily, will perform well first time, and will continue to operate at the highest levels throughout its life.

In the unlikely event that there are any difficulties, you have the reassurance of the UK technical support and a warranty that is backed by the larger HellermannTyton Group with a long history in the industry. Ultimately, the choice of HellermannTyton significantly reduces the risk of your project.

### Benefits of Choosing HellermannTyton

- Quality of the products, designs and materials
- Credibility of our 25-year system warranty
- Over 30 year of industry knowledge
- UK design capability
- Environmentally responsible
- Established UK manufacturer

## Pre-terminated Fibre Solutions

For 20 years HellermannTyton has been a pioneer in pre-terminated infrastructure with its RapidNet solution.

RapidNet is the pre-terminated, pre-tested cassette based 'plug and play' system developed by HellermannTyton, designed to deliver high performance and improve the ease and speed of infrastructure deployments.

Initially a copper cassette to cassette solution designed for data centres, RapidNet quickly evolved to suit call centre and office 'to the desk' demands with cassette to pod and cassette to jack options. Shortly after, RapidNet Fibre was introduced with LC and SC cassette versions. A little later, MTP cassettes joined the portfolio adding increased fibre capacity to meet the demands of the modern-day data centre.

In early 2024 HellermannTyton Connectivity released RapidNet ULTRA, taking the existing data centre fibre solution beyond today's requirement, offering an even greater fibre density while accommodating very small form factor connectivity and supporting tomorrow's requirements for high bandwidth, advanced network architectures and ultra Ethernet.

RAPIDNET®  
**ULTRA**

## There is no one size fits all

The data centre industry is diverse and the RapidNet ULTRA system embodies this belief. A 'one solution fits all' won't suffice.

The RapidNet Ultra system been developed with you in mind, whether you are a network designer, data centre manager, engineer, or end user, RapidNet Ultra provides you with a choice of cabling configurations to support your needs.

### Assess Your Data Centre's Needs

The following are simplified points of consideration for your data centre needs. All of these points will affect the choices you make for your cabling solution. These are not exhaustive and if you require assistance with understanding more about making the right choice for your cabling then please contact our application engineering team to discuss further.

#### Today's bandwidth needs

This will determine the specification of the optical transceivers being used and will directly affect a number of factors, such as; connector form factor i.e. LC or MTP - and help to establish which base fibre system to use i.e. Base-8 or Base-12.

#### Tomorrow's bandwidth and potential migration requirements

Future plans for increased bandwidth and potential migration from one transceiver type to another e.g. 400Gb to 50Gb may present the need to use assemblies that offer flexibility for moves, adds & changes i.e. MTP Pro connectors to help change polarity and gender. Consideration of tomorrows demands will influence the link configurations of today and create a more sustainable approach to your system.

#### Distance

Consider the cabling distance. Are you only concerned with short runs within a data centre or do you need to consider longer distances within a large building or campus environment. Do you need to build in redundancy? This is one factor that will help choose the correct fibre specification such as OM4 or OS2.

#### Loss budgets

Consider the complexity of your infrastructure, are you restricted by loss budget? HellermannTyton is renowned in the industry for offering best in class low loss pre-terminated links with direct termination to connectors, helping you to reduce your overall loss.

#### Topology

Most data centres utilise industry standard architectures and cabling topologies. In turn this affects cable routing pathways, alongside any additional runs to build in redundancy.

The answers to these questions ultimately determine the most suitable cabling and link configurations. For example, are you cabling point to point with little to no obstruction in the pathway making this scenario suitable to deploy a cassette to cassette terminated link? If this link is over a long distance within the data centre you may also wish to use a double jacket (ruggedised) cable for increased mechanical protection.



### RapidNet ULTRA Solution

RapidNet ULTRA cassettes are designed to efficiently transition MTP Backbone assemblies into front presentation small form factor (SFF) or very small form factor (VSFF) connectivity. Cassettes are factory terminated and tested offering best in class ultra low loss connectivity (ULL) for rapid deployment of base-8 or base-12 fibre systems.

The compact design allows for ultra high density installations to be realised, maximising critical connectivity real estate.

RapidNet ULTRA cassettes are available in two footprints ULTRA8 which has been optimised for Base-8 fibre deployments and ULTRA12 which services Base-12 fibre deployments and forms the basis for the rest of the RapidNet ULTRA Solution.



### RapidNet ULTRA8

#### MTP Cassettes

- Rear MTP elite connectivity
- Factory terminated & tested
- Best in class ultra low loss connectivity
- Effortless plug & play system
- Supports OS2 G657-A1, OM4 & OM5 Fibre specifications
- UL94 V0 Compliant

#### Tethered Cassettes

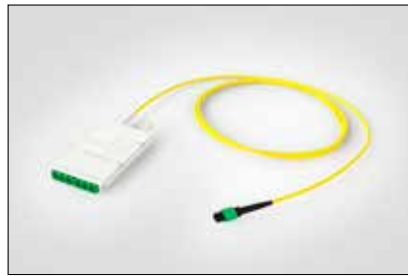
- Supports OS2 G657-A1, OM4 & OM5
- Supports LC, CS, SN Front Presentation Connectivity
- Tail end available in MTP Elite or Pro (Pinned/Unpinned)
- Bare end tail for on-site splicing available
- Single or double jacket micro fibre cable
- Made to order bespoke lengths

#### Cassette to Cassette

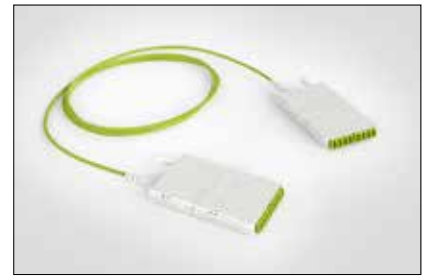
- Reduced insertion loss performance
- Supports OS2 G657-A1, OM4 & OM5
- Supports LC, CS, SN front presentation connectivity
- Rapid deployment, plug & play high density fibre solution
- Single or double jacket micro fibre cable
- Made to order bespoke length



RapidNet ULTRA8 Cassette.



RapidNet ULTRA8 Tethered Cassette.



RapidNet ULTRA8 Cassette to cassette.

#### AMC

- Supports singlemode UPC / APC and multimode UPC Adaptors
- Can be pre-loaded with LC, CS, SN or MTP connectivity
- LC offers 144f per 1U - MTP 16f offers 1152f Per 1U
- Ideal for managing patching fields and fan-out cables



RapidNet ULTRA8 AMC.



## RapidNet ULTRA12

### MTP Cassettes

- Rear MTP elite connectivity
- Factory terminated & tested
- Best in class ultra low loss connectivity
- Effortless plug & play system
- Supports OS2 G657-A1, OM4 & OM5 Fibre specifications
- UL94 V0 Compliant



RapidNet ULTRA12 Cassette.

### Tethered Cassettes

- Supports OS2 G657-A1, OM4 & OM5
- Supports LC, CS, SN Front Presentation Connectivity
- Tail end available in MTP Elite or Pro (Pinned/Unpinned)
- Bare end tail for on-site splicing available
- Single or double jacket micro fibre cable
- Made to order bespoke lengths



RapidNet ULTRA12 Tethered Cassette.

### Cassette to Cassette

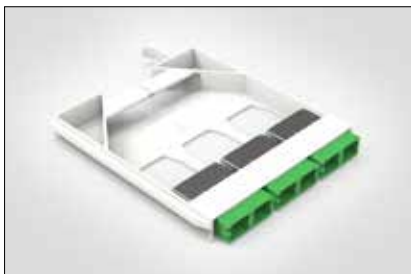
- Reduced insertion loss performance
- Supports OS2 G657-A1, OM4 & OM5
- Supports LC, CS, SN front presentation connectivity
- Rapid deployment, plug & play high density fibre solution
- Single or double jacket micro fibre cable
- Made to order bespoke length



RapidNet ULTRA12 Cassette to cassette.

### AMC

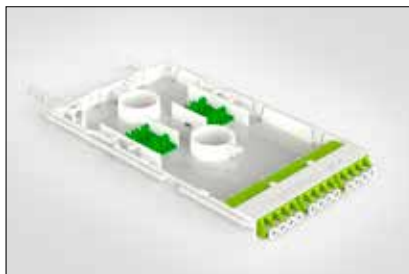
- Supports singlemode UPC / APC and multimode UPC Adaptors
- Can be pre-loaded with LC, CS, SN or MTP connectivity
- LC offers 144f per 1U - MTP 16f offers 1152f Per 1U
- Ideal for managing patching fields and fan-out cables



RapidNet ULTRA12 AMC.

### Splice Cassette

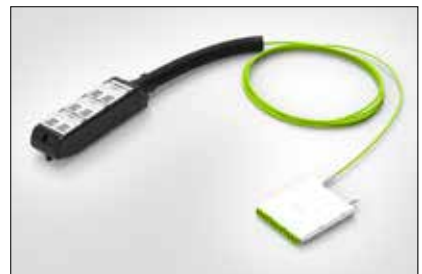
- Supports OS2 G657-A1, OM4 & OM5
- Supports LC, CS, SN front presentation connectivity
- Pre-loaded pigtailed and adaptors
- Convenient and flexible option for low volume MACs
- Best in class ultra low loss connectivity



RapidNet ULTRA12 Splice Cassette.

### Cassettes to POD

- Supports OS2 G657-A1, OM4 & OM5
- LC offers 12f per POD
- Supports fibre to the desk, work station or trading floor
- Desk or floor mounting options
- Single or double jacket micro fibre cable
- Made to order bespoke lengths



RapidNet ULTRA12 Cassette to POD.



### RapidNet ULTRA Cassette Housing

RapidNet ULTRA Series housings are industry standard 19" mountable hardware for housing both RapidNet ULTRA8 (Base-8) and ULTRA12 (Base-12) cassettes.

Available in 1U, 2U, 3U & 4U heights Housings come standard with integrated rear cable management support, adjustable side mounting brackets, integrated front patchcord management rings and removable swing down patching field cover. A port identification labelling matrix is pre-installed on the inside of the cover.

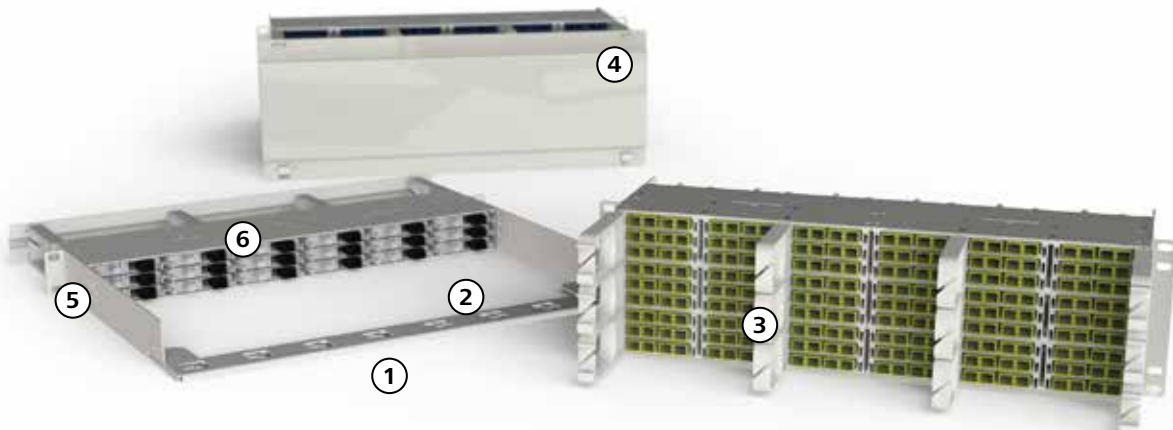
The housings come pre-assembled with mounting kit, ready to install straight into the rack. Painted with RAL 9003 Signal white to increase light reflectance which helps to improve in rack visibility alongside supporting reduced energy costs from lighting.



#### Features and Benefits:

- High fibre density: LC 144f, CS 216f, SN 288f per U
- Rear loading cassettes
- Integrated rear cable management
- Integrated front patchcord management rings
- Adjustable mounting brackets
- Patching field swing down cover
- Identification label matrix
- 19" Mounting profile
- Signal White RAL 9003
- Fast, one person installation

Housing Size		1U	2U	3U	4U
Cassette Capacity	Base-8	18	36	54	72
	Base-12	12	24	36	48
No. of Rows		3	6	9	12
Fibre Capacity (LC)		144f	288f	432f	576f
Fibre Capacity (CS)		216f	432f	648f	864f
Fibre Capacity (SN)		288f	576f	864f	1152f



① Easy one person installation

③ Integrated front management rings

⑤ Adjustable mounting profiles



② Integral cable management  
Supports incoming cables and fanout manifolds



④ Removable drop down patching field cover + port ID matrix



⑥ Rear plug & play cassette entry





### RapidNet ULTRA Multi-Fibre Assemblies

RapidNet ULTRA Multi-Fibre Assemblies are designed, manufactured and tested to the highest quality to support critical data centre infrastructure and sensitive high bandwidth multi-fibre systems. The fibre assemblies all benefit from best in class ultra-low loss connectivity.

Assemblies are produced using 3.0mm round cable for multi-fibre cables or 2.0mm cable for the fan-out legs helping reduce overall cable volume in containment and maintain good air flow within the rack or cabinet.

Multi-Fibre Assemblies can be made bespoke to your requirement, giving you choice and flexibility in your network design.

Fibre assemblies are available in a variety of fibre counts and specifications to support OS2, OM4 and OM5 facilitating requirements from 10G to 400G and beyond.



### MTP Trunk Cables

MTP Trunk Cables support backbone requirements and cross-connection patching within a data centre network.

Available as standard with female (non-pinned) MTP Elite Connectors and benefiting from 3.0mm multi-fibre micro cables for optimised airflow and cable volume reduction.



RapidNet ULTRA OM3 MTP Trunk Cable.



RapidNet ULTRA OM4 MTP Trunk Cable.

### MTP Harness Links

MTP Harness Links are designed to offer a breakout from multi-fibre MTP connectivity to LC connectivity or very small form factor connectors such as CS or SN. Harness links are designed to enable interconnection between active equipment and patching interfaces or create a cross-connect point between passive patching fields.

Available in singlemode and multimode, harness links benefit from LC uni-boot connectors and female (non-pinned) MTP Elite connectors.



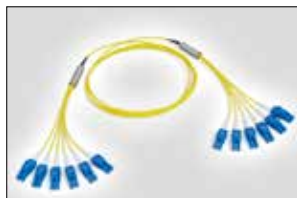
RapidNet ULTRA MTP Harness Link.

### Multi-Fibre Assemblies

Multi-Fibre Assemblies are produced with a variety of cable and connector combinations. Options include LC, MTP, CS and SN connectors. Available with either single and double jackets supporting singlemode and multimode specifications with fibre counts from 8 to 144. Multi-Fibre Assemblies offer an effective way to rapidly deploy patching where higher density is required while reducing installation time and risk of error.



RapidNet ULTRA Multi-Fibre Assemblies.



RapidNet ULTRA Multi-Fibre Assemblies.

### Fibre Jumpers

MTP Harness Links are designed to offer a breakout from multi-fibre MTP connectivity to LC connectivity or very small form factor connectors such as CS or SN. Harness links are designed to enable interconnection between active equipment and patching interfaces or create a cross-connect point between passive patching fields.

Available in singlemode and multimode, harness links benefit from LC uni-boot connectors and female (non-pinned) MTP Elite connectors.



RapidNet ULTRA Fibre Jumpers.

## GigaDuct Fibre Raceway

GigaDuct is a robust, scalable cable management system engineered specifically for organising and protecting optical fibre cables in the data centre environment.

Constructed with precision, it provides a dedicated pathway that prevents cable congestion, minimises physical stress on fibres, and facilitates efficient cable management.

Whether you are setting up a new data centre or upgrading an existing one, HellermannTyton's GigaDuct offers unmatched versatility and reliability.

## Why choose our system?

### Superior Cable Protection

The HellermannTyton GigaDuct Fibre Raceway is designed to protect your optical fibre cables from physical damage, accidental disconnections, and other environmental factors. The enclosed pathway ensures that your cables remain intact, preserving signal integrity and reducing the risk of network downtime.

### Enhanced Organisation and Accessibility

GigaDuct provides a structured and orderly environment for high density fibre installations, making maintenance and upgrades straightforward and hassle-free. Easy access points along the raceway enable quick and efficient cable management, saving you time and effort.

### Renowned HellermannTyton Quality

Built on decades of industry-leading innovation in cable management and Structured Cabling Systems. Our solutions are rigorously tested in the world's most demanding data centres, delivering unwavering reliability where performance cannot be compromised.

### Global Compliance & Trusted Performance

Meets international performance standards (including ISO, IEC, TIA, CAN/ULC and CSA) for safety, pathway, routing and cable management requirements in data centre and commercial building environments ensuring certified performance for global requirements.

### Fire Safety Standards

HellermannTyton's GigaDuct is Manufactured from LSZH (Low-Smoke-Halogen-free), flame-retardant UL94 V0 certified materials, ensuring superior fire safety and reduced toxic emissions in critical environments.

### Tool-Free Couplers

Innovative tool-free couplers enable rapid GigaDuct Fibre Raceway assembly and installation, reducing deployment time and labour costs without compromising long term stability and reliability.

### Easily Adaptable for Future Changes

Designed with future-proofing in mind, our GigaDuct Fibre Raceway's modular design allows seamless expansion, adapting to evolving network demands without costly overhauls. This flexibility ensures that your cable management infrastructure can evolve effortlessly as your data centre demands grow and change, maximising your return on investment.

### Available in 4 Sizes

HellermannTyton's GigaDuct is available in a variety of sizes to suit any data centre configuration; 50mm, 100mm, 200mm and 300mm wide. This range ensures that you have the perfect fit for your specific needs, providing flexibility and adaptability for any data centre installation.



### GigaDuct Fibre Raceway

Elevate your data centre with HellermannTyton's GigaDuct Fibre Raceway. In today's data-driven world, the integrity and efficiency of your optical fibre network is critical to your success. GigaDuct offers the protection, organisation, and scalability needed to keep your data centre running at peak performance. Experience the difference with a solution designed to meet the highest standards of quality and innovation.

#### Straight Duct Lengths

Solid straight duct lengths are available in 50, 100, 200, 300mm wide options and are 1.8m (5ft 9") long as standard and are used to create horizontal cable pathways. They can be supplied with or without covers.

Slotted straight duct lengths in 50 & 100mm wide sizes are used in applications for multiple, high volume vertical drops or within network cabinet racks and optical distribution frames to aid with high-density vertical patchcord management.



Solid straight duct.



Solid straight duct without cover.



100mm slotted duct with 100mm spaced slots.



50mm slotted duct with 100mm spaced slots and channel trumpet.

#### Express Waterfall Outlet

The GigaDuct express waterfall outlet is an innovative solution designed to manage the critical transition of fibre optic cables from horizontal overhead pathways down to equipment racks and cabinets.

##### Key features and benefits:

- **Protects optical fibre:** Ensures critical bend radius control, preventing damage and maintaining signal integrity as fibres transition from horizontal to vertical.
- **Flexible and adaptable:** Allows for vertical fibre drop-offs at any point along a straight duct run, supporting dynamic data centre layouts and easy moves, adds, or changes (MACs). Can be paired with an optional trumpet to provide optimal bend radius for exiting fibres, or with outlet adaptors to transition to flexible tubing.
- **Tool-free and fast installation:** Mounts directly onto existing ducting without tools or cutting, significantly reducing installation time and labour costs.
- **Optimal cable management:** Provides a clean, organised, and secure pathway for fibre cables, enhancing physical protection and overall system neatness.
- **Safe and compliant:** Constructed from halogen free, fire retardant (LSZH) material (UL94V-0), meeting high safety standards essential for critical infrastructure environments.



Express waterfall outlet.



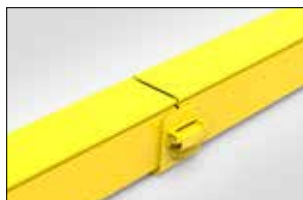
Express waterfall outlet with 100x100mm outlet adaptor.

#### Tool-free Coupler

GigaDuct innovative tool-free couplers are used to connect horizontal straight duct, elbows, T-Junctions, intersections and reducers without the need for nuts, bolts or hand tools.



Tool-free Coupler.



Tool-free Coupler on straight duct.

#### Manual Coupler

GigaDuct manual couplers are used to connect horizontal straight duct, elbows, T-Junctions, intersections and reducers. This model of coupler requires the use of fixing hardware and hand tools to connect.



Manual Coupler.



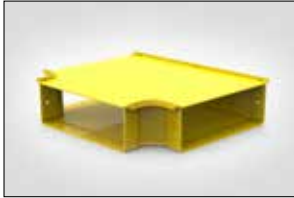
M6 x 20mm coach bolt, nut kit and protective cap.



### T-Junctions

#### Horizontal T-Junctions

Horizontal T-Junctions are used to create breakouts and diverse routing along horizontal pathways. When coupled with vertical elbows, they can also create a drop-off method. Available with or without covers.



Horizontal T-Junctions with cover.



Horizontal T-Junctions without cover.

#### Vertical T-Junctions

Vertical T-Junctions are used to create drop-off points from the horizontal straight duct directly into racks, cabinets or patching frames. Available with or without covers.



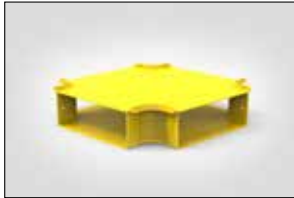
Vertical T-Junctions with cover.



Vertical T-Junction reducer with cover.

### Intersections

Intersections provide diverse routing between straight duct along horizontal pathways.

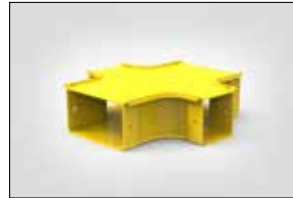


Intersection with cover.



Intersection without cover.

Reducer intersections allow for the use of different sized straight duct lengths.



Reducer intersection with cover.

### Vertical Elbows

Vertical elbows allow for routing alteration to allow horizontal paths to evade obstacles or to allow joining of horizontal paths at different heights.

Available in up or down configuration across 90° or 45° angles, with or without covers.



45° Vertical inside elbow with cover.



90° Vertical inside elbow with cover.



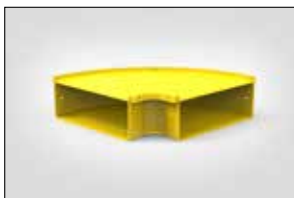
90° Vertical outside elbow with cover.



45° Vertical outside elbow with cover.

### Horizontal Elbows

Horizontal elbows allow for change in horizontal routing direction and are available in 90° or 45° angles with or without covers.



90° Horizontal 300mm elbow.



90° Horizontal 100mm elbow.



45° Horizontal 300mm elbow.



45° Horizontal 100mm elbow.

## Racks & Cabinets with HellermannTyton

Experience unparalleled value with a premium data centre solution from HellermannTyton, offering:

Top-tier products at highly competitive prices, backed by swift and reliable delivery  
Exceptional customer support from our UK-based team, part of an award-winning data centre solutions manufacturer celebrated for service excellence.

A rich heritage of innovation and impressive environmental credentials.  
Bespoke design consultancy, providing tailored solutions to address your unique requirements.

## Why choose our system?

### A Comprehensive Suite of Complementary Products to Fulfil all your Data Centre Needs

- Aisle containment systems
- High-security cages
- Advanced locking mechanisms
- Efficient in-row cooling solutions
- An extensive array of accessories

Our solutions are meticulously engineered to enhance efficiency and bolster security, whilst simultaneously reducing energy consumption and operational costs.

### Choose HellermannTyton for Data Centre Excellence...

...that combines quality, innovation, and sustainability, all delivered with outstanding service.

Complement your setup with our comprehensive range of high-quality accessories, meticulously designed to meet your diverse requirements:

- Versatile Cable Management Solutions
- Adaptable Shelving Options
- Essential Infrastructure Components
- Blanking panels for improved airflow management
- Earthing kits
- Baying kits
- Power Distribution Unit (PDU) Integration
- User-friendly universal mounting brackets and trays
- Enhanced Access Solutions
- Stability Assurance

Our solutions are meticulously engineered to enhance efficiency and bolster security, whilst simultaneously reducing energy consumption and operational costs.



### Expertise at your fingertips...

We have a knowledgeable team with over 30 years experience to work with you to configure the data centre infrastructure you're looking for.

Tel: +44 (0) 1604 707420

Email: [sales@htdata.co.uk](mailto:sales@htdata.co.uk)



### Server Cabinets

#### 27U, 42U, and 48U

The Sentinel Server Cabinet, constructed from high-grade steel, provides robust performance and versatility for data centres, featuring an innovative twist-and-lock mechanism for secure hardware installation and seamless compatibility with various hardware brands without modification.

Compliant with EU energy efficiency standards, it supports sustainability goals while offering optimal cable management and a durable, adaptable foundation for diverse IT environments, with customizable options available to meet specific business needs.

- Height: 27U, 42U, and 48U
- Custom heights available from 18U to 58U
- Width: 600mm, 800mm, and 1000mm
- Depth: 600mm, 800mm, 1000mm, and 1200mm



Server Cabinets 800x1000mm.



Server Cabinets 800x1000mm.

### Network Cabinets

#### 27U, 42U, and 48U

The Sentinel Network Cabinet provides a durable and versatile solution for enterprise and data centre needs, constructed from high-grade steel for structural integrity and optimized cable management.

Its flexible design accommodates diverse hardware without modifications and complies with EU energy efficiency standards, supporting sustainability goals. Offering both standard and customized configurations, the Sentinel cabinet ensures a reliable, adaptable, and eco-conscious foundation for your IT infrastructure.

- Height: 18U, 24U, 27U, 42U, and 48U
- Custom heights available from 18U to 58U
- Width: 600mm and 800mm
- Depth: 600mm, 800mm, 1000mm, and 1200mm



Network Cabinets 600x600mm.



Network Cabinets 600x600mm.



### Colocation Cabinets

#### 42U, and 48U

The Sentinel Colocation Cabinets offer robust security and efficiency for shared data centres. These partitioned server racks allow multiple tenants to securely house their IT equipment within individually locked sections of a single cabinet.

Built from premium steel, they ensure structural integrity and optimized cable management, delivering high performance and versatility for modern colocation environments.

- Height: 42U and 48U
- Width: 600mm and 800mm
- Depth: 1000mm and 1200mm



Colocation Cabinets 800x1000mm.



Colocation Cabinets 800x1000mm.



Colocation Cabinets 800x1000mm.

### HD Patching Racks

#### 27U, 42U, and 48U

The new Sentinel High Density Patching Rack represents a leap forward in cable infrastructure management, designed to meet the complex demands of today's diverse networking environments.

- Height: 42U and 48U
- Width: 500mm (compact option) and 1000mm (doubled usable patching field)
- Depth: 1000mm
- Weight capacity: Tested up to 1500kg (evenly distributed)



HD Patching Racks 1000x1000mm.



HD Patching Racks 1000x1000mm.



HD Patching Racks 1000x1000mm.

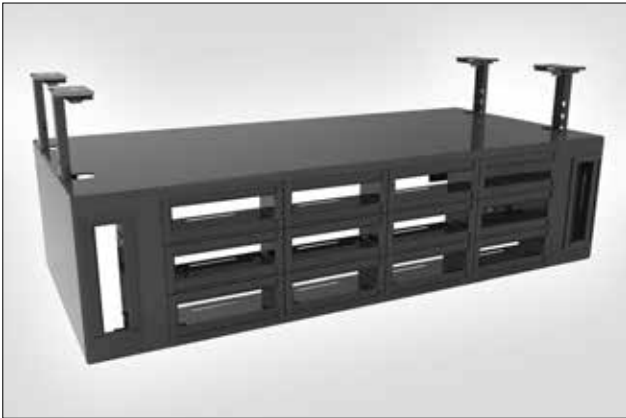


### Out of Rack

#### 3.5U

The Out of Rack unit, maximizes network connectivity by accommodating up to 84 copper ports or 2016 fibres via RapidNet cassettes. Designed for above-rack installation, it supports both copper and fibre patching, and optional accessories like gland kits and patch leads enhance its versatility.

- 3U RapidNet Ready Cassette Space
- 2 Zero U Cassette Locations
- Maximum capacity 84 Copper Ports or 2016 Fibres
- 600mm width for the narrowest server rack
- Fits any 50mm pitch basket tray
- Vertical cable management into the rack or cabinet

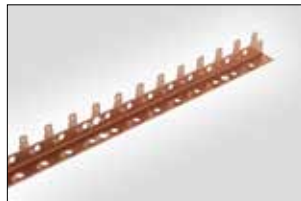


Out of Rack.

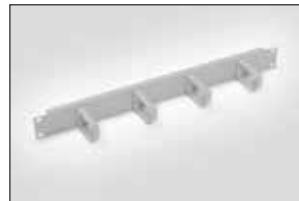
### Cable Management & Accessories



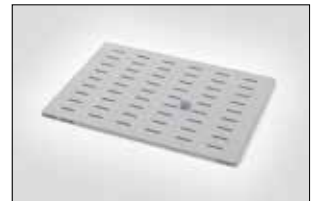
1U Jumper Ring Panel.



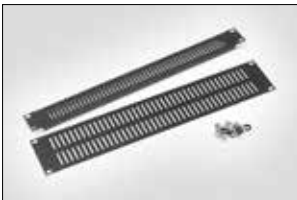
Copper Bus Bar.



1U 4 Ring Cable Manger.



Standard Shelf.



1U and 2U Vented Blanking Plate.



1U and 2U Brush Panel.



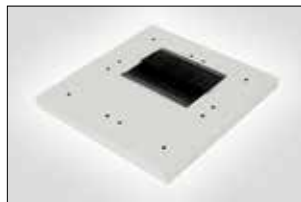
1U Black and White Blanking Plate.



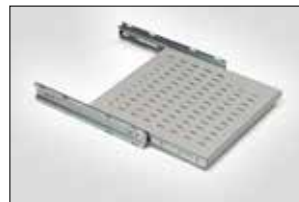
1U Cantilever Shelf.



Earth Bonding Cable Kit.



Replacement Floor Tile 600x600mm.



Telescopic Shelf.



2U Slack Manager.



## Intelligent PDU Solutions for Data Centres

HellermannTyton provides advanced intelligent PDU solutions tailored for data centre environments.

Our UK Manufactured PDUs offer real-time power monitoring, energy efficiency optimisation, and remote outlet control, ensuring seamless management of power consumption.

With features including environmental monitoring (temperature, humidity, and security integration), SNMP support, and web-based GUI access, our PDUs deliver comprehensive control and visibility.

Designed for reliability and scalability, HellermannTyton's intelligent PDUs are ideal for modern data centres seeking to enhance operational efficiency, reduce downtime, and support sustainable energy practices.

- Real-Time Power Monitoring
  - Accurately track energy usage (Amps, Volts, Power Factor) at socket level (<1% accuracy)
  - Optimise power consumption and support green initiatives
- Remote Outlet Control
  - Remotely power cycle individual outlets for efficient server management
  - Reduce downtime and improve operational efficiency
- Environmental Monitoring
  - Monitor temperature, humidity, smoke, and water levels
  - Pre-empt potential issues and maintain optimal conditions
- Integrated Security
  - Webcam and rack door access control for enhanced security
  - Protect critical IT infrastructure from unauthorised access
- SNMP and Web-Based GUI
  - Access real-time data and alerts via SNMP or an intuitive web interface
  - Simplify monitoring and management of power and environmental conditions
- Scalable and Customisable
  - Available in various configurations to suit unique data centre requirements
  - Supports both AC and DC power distribution for diverse applications
- High Reliability and Durability
  - Built to the highest standards with robust components
  - Backed by a 5-year warranty for peace of mind
- Energy Efficiency and Cost Savings
  - Identify and reduce energy waste to lower operational costs
  - Support sustainable data centre practices

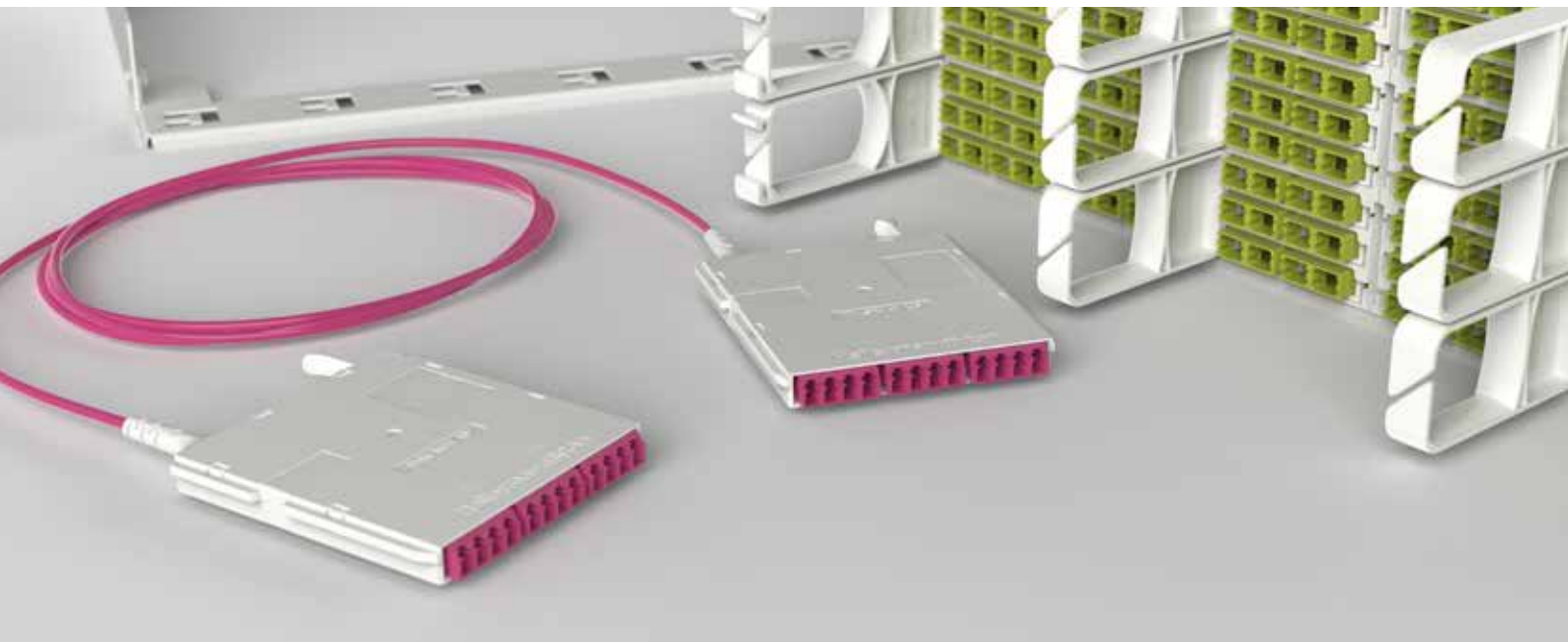
HellermannTyton's intelligent PDUs provide a comprehensive, reliable, and scalable solution for modern data centres, ensuring efficient power management, enhanced security, and reduced environmental impact.



19" Compact PDU.



Vertical PDU.



## HellermannTyton

**HellermannTyton Data Ltd – UK**  
Waterside House,  
Edgar Mobbs Way  
Northampton NN5 5JE  
Tel.: +44 1604 707 420  
Email: [sales@htdata.co.uk](mailto:sales@htdata.co.uk)  
[www.htdata.co.uk](http://www.htdata.co.uk)