

GigaDuct - Fibre Raceway

Better Technology through Innovation

MADE TO CONNECT

Welcome to HellermannTyton

We are Made to Connect

HellermannTyton is an established leader in the design, development and manufacture of innovative network infrastructure solutions for both internal and external copper and fibre networks.

At HellermannTyton we pride ourselves on being a leading solutions provider, offering quality end to end network systems, industry and technical expertise and first-class customer service and support.

Our extensive LAN product range covers Cat6A and Cat6 solutions as well as fibre connectivity and a comprehensive range of accessories. To strengthen our range further, all of our copper and fibre solutions are available in our world leading RapidNet Ultra and RapidNet pre-terminated formats.

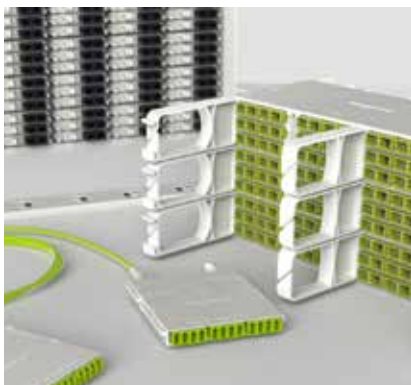
Market and Industry Knowledge

Selecting HellermannTyton for your network infrastructure gives you peace of mind, knowing that the system can be installed easily, will perform well first time, and will continue to operate at the highest levels throughout its life.

In the unlikely event that there are any difficulties, you have the reassurance of the UK technical support and a warranty that is backed by the larger HellermannTyton Group with a long history in the industry. Ultimately, the choice of HellermannTyton significantly reduces the risk of your project.

Benefits of HellermannTyton

- Quality of the products, designs and materials
- Credibility of our 25-year system warranty
- Over 30 years of industry knowledge
- UK design capability
- Environmentally responsible
- Established UK manufacturer





The future of data centre cable management starts with our state-of-the-art GigaDuct Fibre Raceway.

In the dynamic world of data communication, ensuring the optimal performance and protection of your optical fibre cables is paramount. HellermannTyton's GigaDuct is the ultimate solution designed to revolutionise how you manage and safeguard your critical infrastructure.



Make the right choice

The capacity table below shows the recommended number of cables to avoid crushing, maintain bend radius and ensure smooth maintenance. This represents the 50% calculated fill.

Selecting the correct size from day one is essential for supporting your requirements, not only for today but for tomorrow and beyond. Consider your future equipment and make allowances for additional cabling needs.

Optical cable size (mm)	DUCT SIZE (MM)			
	50 X 50	100 X 100	200 X 100	300 X 100
1.6	584	2296	4507	6685
2	374	1469	2884	4278
3	166	653	1282	1901
9.4	16	66	130	193
13.2	8	33	66	98
CAPACITY (no. of cables at 50% fill)				

Choose GigaDuct Fibre Raceway

GigaDuct is a robust, scalable cable management system engineered specifically for organising and protecting optical fibre cables in the data centre environment.

Constructed with precision, it provides a dedicated pathway that prevents cable congestion, minimises physical stress on fibres, and facilitates efficient cable management.

Whether you are setting up a new data centre or upgrading an existing one, HellermannTyton's GigaDuct offers unmatched versatility and reliability.



Why choose our system?

Superior Cable Protection

The HellermannTyton GigaDuct Fibre Raceway is designed to protect your optical fibre cables from physical damage, accidental disconnections, and other environmental factors. The enclosed pathway ensures that your cables remain intact, preserving signal integrity and reducing the risk of network downtime.

Enhanced Organisation and Accessibility

GigaDuct provides a structured and orderly environment for high density fibre installations, making maintenance and upgrades straightforward and hassle-free. Easy access points along the raceway enable quick and efficient cable management, saving you time and effort.

Renowned HellermannTyton Quality

Built on decades of industry-leading innovation in cable management and Structured Cabling Systems. Our solutions are rigorously tested in the world's most demanding data centres, delivering unwavering reliability where performance cannot be compromised.

Global Compliance & Trusted Performance

Meets international performance standards (including ISO, IEC, TIA, CAN/ULC and CSA) for safety, pathway, routing and cable management requirements in data centre and commercial building environments ensuring certified performance for global requirements.

Fire Safety Standards

HellermannTyton's GigaDuct is manufactured from LSZH (Low-Smoke-Halogen-free), flame-retardant UL94 V0 certified materials, ensuring superior fire safety and reduced toxic emissions in critical environments.

Tool-Free Couplers

Innovative tool-free couplers enable rapid GigaDuct Fibre Raceway assembly and installation, reducing deployment time and labour costs without compromising long term stability and reliability.

Easily Adaptable for Future Changes

Designed with future-proofing in mind, our GigaDuct Fibre Raceway's modular design allows seamless expansion, adapting to evolving network demands without costly overhauls. This flexibility ensures that your cable management infrastructure can evolve effortlessly as your data centre demands grow and change, maximising your return on investment.

Available in 4 Sizes

HellermannTyton's GigaDuct is available in a variety of sizes to suit any data centre configuration; 50mm, 100mm, 200mm and 300mm wide. This range ensures that you have the perfect fit for your specific needs, providing flexibility and adaptability for any data centre installation.

Uncompromised Support

From design to deployment and beyond: get dedicated support services with our experienced product and engineering team.

Custom design solutions, hands-on training & on-site support for hassle-free installations.



HellermannTyton offers design, training and on-site support services.

Design Consultation Service

If you require assistance with designing your GigaDuct Fibre Raceway or want to discuss how to optimise your cable management, then simply submit your data centre floor plan with cabinet locations and any obstructions to HellermannTyton's engineering team.

We will deliver a complete GigaDuct solution, tailored to your requirements - including a customised design drawing and detailed bill of materials for your consideration.

On-Site Technical Support

Our dedicated product and engineering team offer full on-site technical support.

Whether it is pre or post installation site audits, on-site design consultation, troubleshooting or long term aftercare, our team is dedicated to ensuring you get the best out of your GigaDuct investment.

Gigaduct Installation Training

We pride ourselves on the broad spectrum of training available to our customers.

We offer a full HellermannTyton Academy Certified product familiarisation and installation training course for the GigaDuct solution.

Whether you are an engineer, an end user, or work within the distribution channel, you will gain a detailed understanding of the product range, how to install, inspect and maintain your solution.

Upon completion delegates will be certified to install and audit the GigaDuct Fibre Raceway.



Expertise at your fingertips...

We have a knowledgeable team with over 30 years experience to work with you to configure the GigaDuct Fibre Raceway you're looking for.

Tel: +44 (0) 1604 707420

Email: sales@htdata.co.uk

HellermannTyton offer a variety of fibre and copper training courses to meet the needs of its customers.

These courses cover a wide range of topics, including cable configurations, cable construction, power and data, shielded systems, product installation, and best practices. Whether you are looking for installer training, City & Guilds or CPD, HellermannTyton has a course to meet your needs.



Authorised Installer Programme

Complete Copper and Complete Fibre

These courses are designed to give attendees both practical and theoretical training, covering a range of topics and the latest industry standards.



Webinar Authorised Installer

This course is aimed at installers with varying levels of experience, providing training on a range of topics without the need for going 'back to basics'.



Toolbox Training

For this course, our training instructors come to you to develop your practical skills and knowledge in real-time, either on a current project or at an on-site venue determined by you.



Product Technology and Support

Designed for those new to the industry or with experience, aimed to give you additional skills and knowledge in a range of areas including testing, inspection and cleaning.



HellermannTyton Structured Cabling 101

A two part course, covering both copper and fibre installation, designed to give those with little or no experience a solid introduction to the world of structured cabling and installation best practice.



City & Guilds 3668 Communications Cabling Course

This is an intensive fibre course, covering all aspects of fibre preparation, installation and testing where on completion you will have gained an industry recognised City & Guilds qualification.



CPD Accredited Courses

Our CPD courses are short 'additional learning' courses designed to develop your industry knowledge and gain CPD points towards existing CPD accreditation.



System Components

Elevate your data centre with HellermannTyton's GigaDuct Fibre Raceway. In today's data-driven world, the integrity and efficiency of your optical fibre network is critical to your success.

Our GigaDuct offers the protection, organisation, and scalability needed to keep your data centre running at peak performance. Experience the difference with a solution designed to meet the highest standards of quality and innovation.

Straight Duct Lengths

Solid straight duct lengths are available in 50, 100, 200, 300mm wide options and are 1.8m (5ft 9") long as standard and are used to create horizontal cable pathways. They can be supplied with or without covers.

Slotted straight duct lengths in 50 & 100mm wide sizes are used in applications for multiple, high volume vertical drops or within network cabinet racks and optical distribution frames to aid with high-density vertical patchcord management.



Solid straight duct.



Solid straight duct without cover.



100mm slotted duct with 100mm spaced slots.



50mm slotted duct with 100mm spaced slots and channel trumpet.

Express Waterfall Outlet

The GigaDuct express waterfall outlet is an innovative solution designed to manage the critical transition of fibre optic cables from horizontal overhead pathways down to equipment racks and cabinets.

Key features and benefits:

- **Protects optical fibre:** Ensures critical bend radius control, preventing damage and maintaining signal integrity as fibres transition from horizontal to vertical.
- **Flexible and adaptable:** Allows for vertical fibre drop-offs at any point along a straight duct run, supporting dynamic data centre layouts and easy moves, adds, or changes (MACs). Can be paired with an optional trumpet to provide optimal bend radius for exiting fibres, or with outlet adaptors to transition to flexible tubing.
- **Tool-free and fast installation:** Mounts directly onto existing ducting without tools or cutting, significantly reducing installation time and labour costs.
- **Optimal cable management:** Provides a clean, organised, and secure pathway for fibre cables, enhancing physical protection and overall system neatness.
- **Safe and compliant:** Constructed from halogen free, fire retardant (LSZH) material (UL94V-0), meeting high safety standards essential for critical infrastructure environments.



Express waterfall outlet.



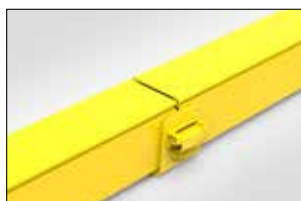
Express waterfall outlet with 100x100mm outlet adaptor.

Tool-free Coupler

GigaDuct innovative tool-free couplers are used to connect horizontal straight duct, elbows, T-Junctions, intersections and reducers without the need for nuts, bolts or hand tools.



Tool-free Coupler.

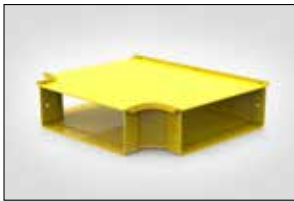


Tool-free Coupler on straight duct.

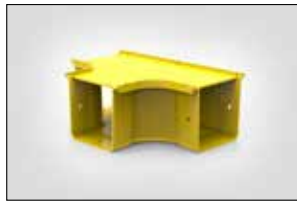
T-Junctions

Horizontal T-Junctions

Horizontal T-Junctions are used to create breakouts and diverse routing along horizontal pathways. When coupled with vertical elbows, they can also create a drop-off method. Available with or without covers.



Horizontal T-Junctions with cover.



Horizontal T-Junctions without cover.

Vertical T-Junctions

Vertical T-Junctions are used to create drop-off points from the horizontal straight duct directly into racks, cabinets or patching frames. Available with or without covers.



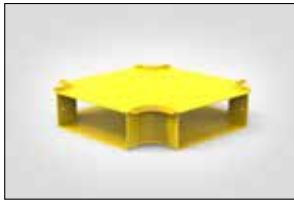
Vertical T-Junctions with cover.



Vertical T-Junction reducer with cover.

Intersections

Intersections provide diverse routing between straight duct along horizontal pathways.

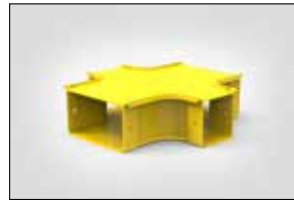


Intersection with cover.



Intersection without cover.

Reducer intersections allow for the use of different sized straight duct lengths.



Reducer intersection with cover.

Vertical Elbows

Vertical elbows allow for routing alteration to allow horizontal paths to evade obstacles or to allow joining of horizontal paths at different heights.

Available in up or down configuration across 90° or 45° angles, with or without covers.



45° Vertical inside elbow with cover.



90° Vertical inside elbow with cover.



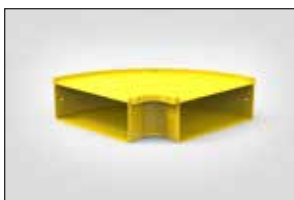
90° Vertical outside elbow with cover.



45° Vertical outside elbow with cover.

Horizontal Elbows

Horizontal elbows allow for change in horizontal routing direction and are available in 90° or 45° angles with or without covers.



90° Horizontal 300mm elbow.



90° Horizontal 100mm elbow.



45° Horizontal 300mm elbow.



45° Horizontal 100mm elbow.

Rapid, Scalable, Robust, Reliable

GigaDuct: The fastest, most reliable way to manage fibre in data centres

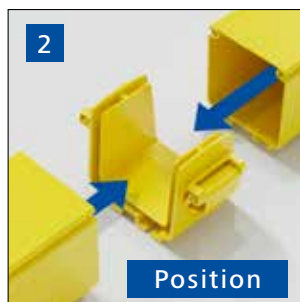
Selecting the right fibre raceway for a data centre or telecom environment is a critical decision - impacting long-term network performance, scalability, and operational costs. Traditional raceway systems often introduce challenges, including complex installation processes that require measuring, cutting, drilling, and bolting. These methods are not only time-consuming and labour intensive but also risk costly disruptions in live environments - leading to higher project expenses, extended deployment timelines, and potential downtime.

GigaDuct revolutionises fibre management with a tool-free, high-speed installation system. The innovative tool-free coupler eliminates the need for drilling or specialised tools, dramatically reducing installation time and labour costs while minimising disruption in active data centres. The result? Faster deployments, cleaner installations (no debris from drilling), and reduced risk of errors.

Installation is effortless

Simply prepare the raceway sections, position the coupler, and connect the sections until you hear a secure click. Need to reconfigure? Just disengage the tabs - no tools required.

With GigaDuct, you have a future-proof, scalable solution that enhances efficiency, reduces total cost of ownership, and ensures a robust infrastructure - all while simplifying cable management in high-density environments.



Tool-free Coupler

Available in 50, 100, 200 & 300mm sizes

The tool-free coupler is a key component of HellermannTyton's GigaDuct Fibre Raceway. Its defining feature is the ability to connect sections of ducting and fittings without the need for any tools, streamlining installation.

Key features:

- **Rapid installation:** Connects ducting and fittings without the need for any tools, drastically cutting down on labour time and costs
- **Streamlined deployment:** Simplifies the setup of complex fibre pathways
- **Enhanced flexibility:** Easily connects and disconnects various duct and fitting types allowing for reuse in system modifications and reconfigurations
- **Clean environment:** Tool-free installation eliminates debris from drilling or traditional joining methods which makes it ideal for sensitive data centre and telecom spaces
- **Cost-effective:** Reduces waste through reusability and minimises installation expenses

Reusable system that connects and unconnects

Tool-free design for simple joining

Slotted channel for coach bolt and nut mounting

Available for 50, 100, 200 & 300mm duct sizes



PRODUCT FOCUS



Key Products

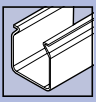
Straight Duct	Straight	12
	Slotted	
Couplers	Tool-free Coupler	13
	Express Waterfall Outlet	
Express Waterfall	Outlet Adaptors	14
	Outlet Trumpet	

Fittings

T-Junctions	Horizontal	15
	Vertical	16
Intersections		18
Elbows	Horizontal	17
	Vertical Inside	19
	Vertical Outside	20
Horizontal Reducers		21
Trumpets		22
End Caps		22
Split Flexible Conduit		23

Mounting Solutions

Underfloor Mounting Kits	24
Ladder Rack and Basket Tray Brackets	24
Threaded Rod Mounting Brackets	25
Universal Brackets	25
Nuts and Bolts	26



Straight Duct Lengths

Solid and Slotted

Technical Description

Horizontal straight duct is used to support straight runs of optical fibre cable. GigaDuct is easily joined together using a combination of elbows, T-Junctions, intersections, reducers and couplers. A variety of mounting options are available to support different installation environments.

Slotted duct features cut-outs spaced at either 50mm or 100mm. These slots allow fibre to vertically drop into cabinets and racks in virtually any location along the route, and can be used with slotted channel trumpets to protect fibre bend radius. Slotted duct is supplied with cover only.

Features and benefits

- Solid duct supplied with or without cover
- Slotted duct supplied with cover only
- Slotted feature simplifies cable routing and installation
- Segregates fibre optic cable from other media to provide GigaDuct flexibility for future additions or changes
- Fully encloses cables to keep out dirt and dust as the fibre is routed through different areas of the data centre
- Protects cables by maintaining proper bend radius, preventing micro bends and macro bends that degrade performance
- Maintains attractive aesthetics by enclosing cables throughout the facility
- Slotted feature simplifies cable routing and installation



Horizontal straight duct in variety of sizes.



100x100mm Slotted duct with 50mm channels.



Close up of slotted channel trumpet LGA-STDx1X-YL.

		DUCT SIZE (MM)			
		50 X 50	100 X 100	200 X 100	300 X 100
SOLID	No Cover	LG-D1DX18-YL-N	LG-D1CX18-YL-N	LG-D1BX18-YL-N	LG-D1AX18-YL-N
	Cover	LG-D1DX18-YL	LG-D1CX18-YL	LG-D1BX18-YL	LG-D1AX18-YL
SLOTTED	50mm Slot	LG-D2DD18-YL	LG-D2CD18-YL		
	100mm Slot	LG-D2DC18-YL	LG-D2CC18-YL		

Subject to technical changes. MOQs apply. Image for illustration purposes only. All measurements in mm unless stated.



Tool-free Coupler

50, 100, 200 & 300mm

Technical Description

GigaDuct innovative tool-free couplers are used to connect horizontal straight duct, elbows, T-Junctions, intersections and reducers without the need for nuts, bolts or hand tools.

Features and benefits

- Reduces installation time
- Requires no special tools to install
- Designed for simplicity without compromising robustness and reliability
- Compatible with GigaDuct straight lengths and accessories



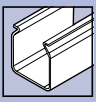
Tool-free coupler in a variety of sizes.



Tool-free coupler shown on duct.

DUCT SIZE (MM)			
50 X 50	100 X 100	200 X 100	300 X 100
LG-CTDXXX-YL	LG-CTCXXX-YL	LG-CTBXXX-YL	LG-CTAXXX-YL

Subject to technical changes. MOQs apply. Image for illustration purposes only. All measurements in mm unless stated.



Express Waterfall Outlet

50, 100, 200 & 300mm

Technical Description

Low-profile express waterfall outlets are easily placed over the sidewall of any new or existing straight duct to create a bend radius-controlled vertical drop off from a horizontal run.

Features and benefits

- Supplied as a complete unit
- Provides a flexible exit point for fibre cable anywhere along horizontal straight duct
- Designed to maintain correct fibre bend radius
- Tool-free installation



100x100mm Express waterfall outlet.

DUCT SIZE (MM)			
50 X 50	100 X 100	200 X 100	300 X 100
LG-SM1XXX-YL		LG-SM2XXX-YL	LG-SM3XXX-YL

Subject to technical changes. MOQs apply. Image for illustration purposes only. All measurements in mm unless stated.

Express Waterfall Outlet Accessories

Adaptors and Trumpets

Technical Description

Outlet adaptors are used to support best practice transition of cables vertically. An open void adaptor provides additional protection for the fibre drop, while conduit adaptors allow 32mm GigaDuct conduit to be secured in place to offer full protection of fibre cables dropping vertically in racks and cabinets.

Features and benefits

- Provides positive transition of cables vertically
- Aids best practice cable management of fibre drop cables
- Conduit outlet adaptors and conduit ensures additional protection along the fibre cable length



Top left: 100x100mm Outlet adaptor.
Bottom left: Outlet trumpet.

Top right: 50x50mm Outlet adaptor.
Bottom right: Close up of 100x100mm Outlet adaptor.

DESCRIPTION	DUCT SIZE (MM)	
	50 X 50	100 X 100
Outlet Adaptor	Conduit 1 x 32mm	LG-SMF1D3-YL
	Conduit 2 x 32mm	LG-SMF2D3-YL
	Open Void	LG-SMX1D5-YL
Outlet Trumpet	LG-SMXXTX-YL	

Subject to technical changes. MOQs apply. Image for illustration purposes only. All measurements in mm unless stated.

Horizontal T-Junctions

Standard and Reducers

Technical Description

Horizontal T-Junctions are used to branch off from the main horizontal GigaDuct routes to equivalent size routing. Supplied with or without covers.

Horizontal reducer T-Junctions are used to branch off from the larger main horizontal GigaDuct routing to smaller horizontal routing. Supplied with or without covers.

Features and benefits

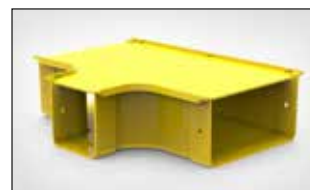
- Supplied with or without cover
- Creates a T-Junction within horizontal routes
- Reducer horizontal T-Junction create transitions from larger to smaller straight GigaDuct
- Segregates fibre optic cable from other media to provide flexibility for future additions or changes
- Fully encloses cables to keep out dirt and dust as the fibre is routed through different areas of the data centre
- Protects cables by maintaining proper bend radius, preventing micro bends and macro bends that degrade performance
- Maintains attractive aesthetics by enclosing cables throughout the facility



100x100mm Horizontal T-Junctions with cover.



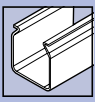
100 to 50mm Horizontal T-Junctions reducer with cover.



200 to 100mm Horizontal T-Junctions reducer with cover.

			DUCT SIZE (MM)			
			50 X 50	100 X 100	200 X 100	300 X 100
No Cover			LG-TEDHXX-YL-N	LG-TECHXX-YL-N	LG-TEBHXX-YL-N	LG-TEAHXX-YL-N
Cover			LG-TEDHXX-YL	LG-TECHXX-YL	LG-TEBHXX-YL	LG-TEAHXX-YL
REDUCER	50mm	No Cover		LG-TNCDHX-YL-N		
		Cover		LG-TNCDHX-YL		
	100mm	No Cover		LG-TNBCHX-YL-N		
		Cover		LG-TNBCHX-YL		

Subject to technical changes. MOQs apply. Image for illustration purposes only. All measurements in mm unless stated.



Vertical T-Junctions

Standard and Reducers

Technical Description

Vertical T-Junctions are used to branch off from the main horizontal GigaDuct route to equivalent size vertical routing. Supplied with or without covers.

Vertical reducer T-Junctions are used to branch off from the larger main horizontal GigaDuct routing to smaller horizontal routing. Supplied with or without covers.

*The 100 to 50mm vertical reducer T-Junction is constructed from the following elements; 100mm vertical T-Junction, 100mm to 50mm straight reducer and a joining kit. This will be supplied fully assembled for ease of installation.

Features and benefits

- Supplied with or without cover
- Creates vertical route transition from main horizontal straight GigaDuct
- Reducer vertical T-Junctions create transition from larger to smaller straight GigaDuct.
- Segregates fibre optic cable from other media to provide flexibility for future additions or changes
- Fully encloses cables to keep out dirt and dust as the fibre is routed through different areas of the data centre
- Protects cables by maintaining proper bend radius, preventing micro bends and macro bends that degrade performance
- Maintains attractive aesthetics by enclosing cables throughout the facility



100x100mm Vertical T-Junctions with cover.



200 to 100mm Vertical T-Junctions reducer with cover.



300 to 100mm Vertical T-Junctions reducer with cover.

			DUCT SIZE (MM)			
			50 X 50	100 X 100	200 X 100	300 X 100
No Cover			LG-TEDVXX-YL-N	LG-TECVXX-YL-N		
Cover			LG-TEDVXX-YL	LG-TECVXX-YL		
REDUCER	50mm	No Cover		LG-TNCDVD-YL-N		
		Cover		LG-TNCDVD-YL		
	100mm	No Cover			LG-TNBCVD-YL-N	LG-TNACVS-YL-N
		Cover			LG-TNBCVD-YL	LG-TNACVS-YL

Subject to technical changes. MOQs apply. Image for illustration purposes only. All measurements in mm unless stated.

Horizontal Elbows

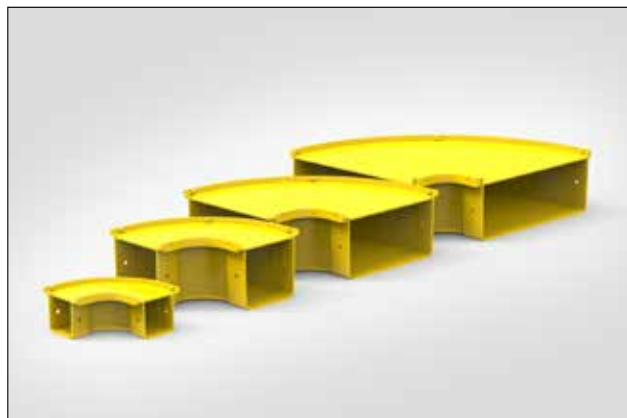
90° and 45°

Technical Description

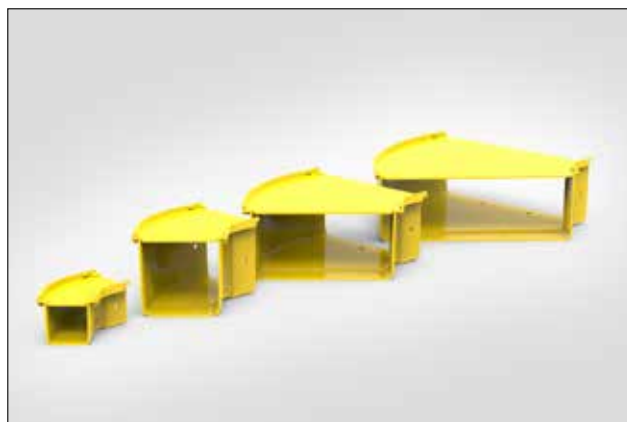
Horizontal elbows are used for creating bends that change the direction of horizontal routes. Available with either a 45° or 90° bend. Supplied with or without covers.

Features and benefits

- Supplied with or without cover
- Changes direction of horizontal routes
- Available in 45° or 90° bends
- Fully encloses cables to keep out dirt and dust as the fibre is routed through different areas of the data centre
- Protects cables by maintaining proper bend radius, preventing micro bends and macro bends that degrade performance
- Maintains attractive aesthetics by enclosing cables throughout the facility



90° Horizontal elbows in a variety of sizes.



45° Horizontal elbows in a variety of sizes.



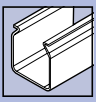
100x100mm 45° Horizontal elbow with cover.



100x100 90° Horizontal elbow with cover.

		DUCT SIZE (MM)			
		50 X 50	100 X 100	200 X 100	300 X 100
45°	No Cover	LG-BHxD45-YL-N	LG-BHXC45-YL-N	LG-BHXB45-YL-N	LG-BHXA45-YL-N
	Cover	LG-BHxD45-YL	LG-BHXC45-YL	LG-BHXB45-YL	LG-BHXA45-YL
90°	No Cover	LG-BHxD90-YL-N	LG-BHXC90-YL-N	LG-BHXB90-YL-N	LG-BHXA90-YL-N
	Cover	LG-BHxD90-YL	LG-BHXC90-YL	LG-BHXB90-YL	LG-BHXA90-YL

Subject to technical changes. MOQs apply. Image for illustration purposes only. All measurements in mm unless stated.



Intersections

Standard and Reducers

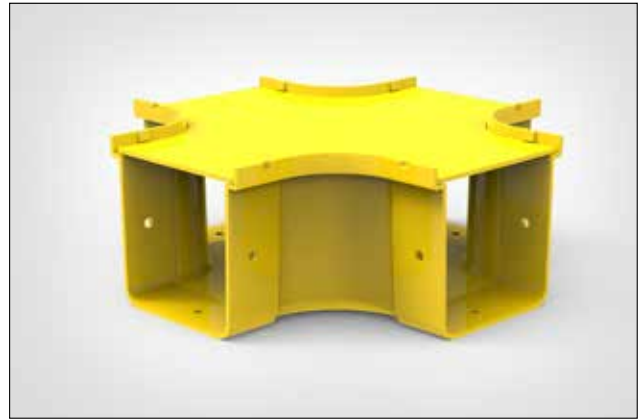
Technical Description

Horizontal intersections offer a four way routing pathway to support diverse routing requirements.

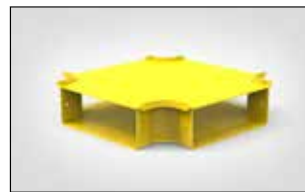
For more complex layouts, horizontal reducer intersections provide this same multi-directional routing while uniquely enabling the seamless crossing of different sized straight ducts. Both intersection types can be supplied with or without covers.

Features and benefits

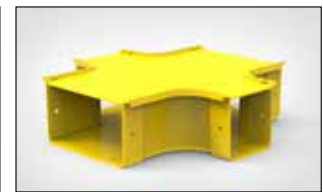
- Supplied with or without cover
- Supports diverse routing of horizontal pathways
- Segregates fibre optic cable from other media to provide flexibility for future additions or changes
- Fully encloses cables to keep out dirt and dust as the fibre is routed through different areas of the data centre
- Protects cables by maintaining proper bend radius, preventing micro bends and macro bends that degrade performance
- Maintains attractive aesthetics by enclosing cables throughout the facility



100x100mm Intersection with cover.



300x100mm Intersection with cover.



200 to 100mm Intersection reducer with cover.

		DUCT SIZE (MM)			
		50 X 50	100 X 100	200 X 100	300 X 100
No Cover		LG-XODDXX-YL-N	LG-XOCCXX-YL-N	LG-XOBBXX-YL-N	LG-XOAAXX-YL-N
Cover		LG-XODDXX-YL	LG-XOCCXX-YL	LG-XOBBXX-YL	LG-XOAAXX-YL
REDUCER 100mm	No Cover			LG-XOBCXX-YL-N	
	Cover			LG-XOBCXX-YL	

Subject to technical changes. MOQs apply. Image for illustration purposes only. All measurements in mm unless stated.



Vertical Inside Elbows

90° and 45°

Technical Description

Inside elbows create a vertical upward transition from GigaDuct horizontal routes. Available with a 45° or 90° bend. Supplied with or without covers.

*The 300mm 90° vertical elbow is constructed from 2 45° elbows and a joining kit. This will be supplied fully assembled for ease of installation.

Features and benefits

- Supplied with or without cover
- For creating vertical upward routing transitions from horizontal routes
- Available in 45° or 90° bends
- Segregates fibre optic cable from other media to provide flexibility for future additions or changes
- Fully encloses cables to keep out dirt and dust as the fibre is routed through different areas of the data centre
- Protects cables by maintaining proper bend radius, preventing micro bends and macro bends that degrade performance
- Maintains attractive aesthetics by enclosing cables throughout the facility



90° Vertical inside elbows in a variety of sizes.



45° Vertical inside elbows in a variety of sizes.



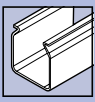
300x100mm 45° Vertical inside elbow with cover.



300x100mm 90° Vertical inside elbow with cover.

		DUCT SIZE (MM)			
		50 X 50	100 X 100	200 X 100	300 X 100
45°	No Cover	LG-BVID45-YL-N	LG-BVIC45-YL-N	LG-BVIB45-YL-N	LG-BVIA45-YL-N
	Cover	LG-BVID45-YL	LG-BVIC45-YL	LG-BVIB45-YL	LG-BVIA45-YL
90°	No Cover	LG-BVID90-YL-N	LG-BVIC90-YL-N	LG-BVIB90-YL-N	LG-BVIA90-YL-N
	Cover	LG-BVID90-YL	LG-BVIC90-YL	LG-BVIB90-YL	LG-BVIA90-YL

Subject to technical changes. MOQs apply. Image for illustration purposes only. All measurements in mm unless stated.



Vertical Outside Elbows

90° and 45°

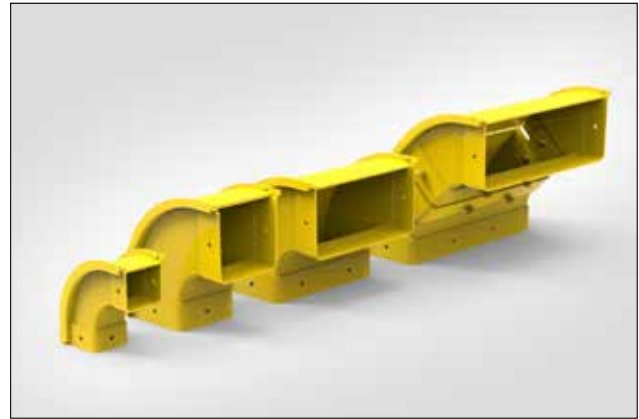
Technical Description

Outside elbows create a vertical downward transition. Available with a 45° or 90° bend. Supplied with or without covers.

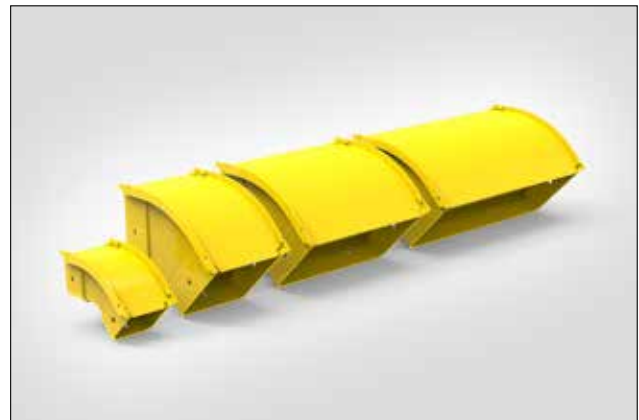
*The 300mm 90° vertical elbow is constructed from 2 45° elbows and a joining kit. This will be supplied fully assembled for ease of installation.

Features and benefits

- Supplied with or without cover
- For creating vertical downward routing transitions from horizontal routes
- Available in 45° or 90° bends
- Segregates fibre optic cable from other media to provide flexibility for future additions or changes
- Fully encloses cables to keep out dirt and dust as the fibre is routed through different areas of the data centre
- Protects cables by maintaining proper bend radius, preventing micro bends and macro bends that degrade performance
- Maintains attractive aesthetics by enclosing cables throughout the facility



Vertical outside elbows 90° in a variety of sizes.



Vertical outside elbows 45° in a variety of sizes.



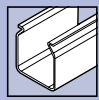
300x100mm 45° Vertical outside elbow with cover.



300x100mm 90° Vertical outside elbow with cover.

		DUCT SIZE (MM)			
		50 X 50	100 X 100	200 X 100	300 X 100
45°	No Cover	LG-BVOD45-YL-N	LG-BVOC45-YL-N	LG-BVOB45-YL-N	LG-BVOA45-YL-N
	Cover	LG-BVOD45-YL	LG-BVOC45-YL	LG-BVOB45-YL	LG-BVOA45-YL
90°	No Cover	LG-BVOD90-YL-N	LG-BVOC90-YL-N	LG-BVOB90-YL-N	LG-BVOA90-YL-N
	Cover	LG-BVOD90-YL	LG-BVOC90-YL	LG-BVOB90-YL	LG-BVOA90-YL

Subject to technical changes. MOQs apply. Image for illustration purposes only. All measurements in mm unless stated.



Horizontal Straight Duct Reducer

With or Without Cover

Technical Description

Horizontal straight duct reducers are used for coupling horizontal straight duct of two different sizes. Supplied with or without covers.

Features and benefits

- Supplied with or without cover
- Facilitates transition from larger to smaller horizontal straight duct
- Segregates fibre optic cable from other media to provide flexibility for future additions or changes
- Fully encloses cables to keep out dirt and dust as the fibre is routed through different areas of the data centre
- Protects cables by maintaining proper bend radius, preventing micro bends and macro bends that degrade performance
- Maintains attractive aesthetics by enclosing cables throughout the facility



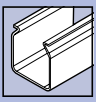
100 to 50mm Horizontal reducer with cover.



300 to 100mm Horizontal reducer with cover.

			DUCT SIZE (MM)			
			50 X 50	100 X 100	200 X 100	300 X 100
REDUCER	50mm	No Cover		LG-RDCDXX-YL-N		
		Cover		LG-RDCDXX-YL		
	100mm	No Cover			LG-RDBCXX-YL-N	LG-RDACXX-YL-N
		Cover			LG-RDBCXX-YL	LG-RDACXX-YL
	200mm	No Cover				LG-RDABXX-YL-N
		Cover				LG-RDABXX-YL

Subject to technical changes. MOQs apply. Image for illustration purposes only. All measurements in mm unless stated.



Trumpets

3 or 4 Sided

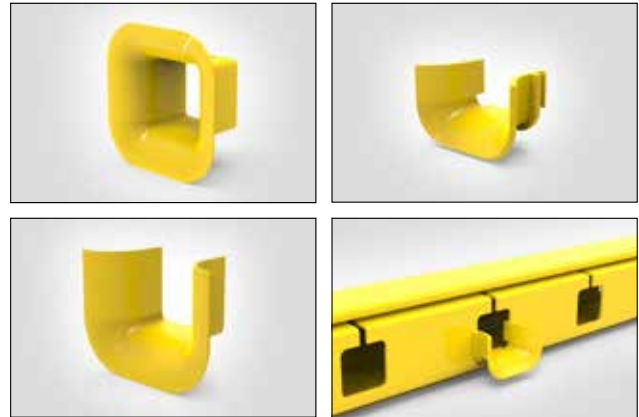
Technical Description

Trumpets help to maintain industry standard bend radius of fibre cables exiting any horizontal straight duct, fitting or outlet.

Slotted channel trumpets are specifically used with the slotted straight duct for maintaining industry standard bend radius of fibre exiting from slotted duct.

Features and benefits

- Protects cables by maintaining proper bend radius, preventing micro bends and macro bends that degrade performance
- Supports professional cable management of existing fibre cables
- Maintains attractive aesthetics by enclosing cables throughout the facility



Top left: 100x100mm 4 sided trumpet.
Bottom left: 100x100mm 3 sided trumpet.

Top right: Slotted channel trumpet.
Bottom right: 50mm Slotted channel trumpet.

	DUCT SIZE (MM)			
	50 X 50	100 X 100	200 X 100	300 X 100
3 Sided	LG-T3DXXX-YL	LG-T3CXXX-YL	LG-T3BXXX-YL	
4 Sided	LG-T4DXXX-YL	LG-T4CXXX-YL	LG-T4BXXX-YL	
Slotted Channel	LGA-STDXX1X-YL			

Subject to technical changes. MOQs apply. Image for illustration purposes only. All measurements in mm unless stated.

End Caps

50, 100, 200 and 300mm

Technical Description

End caps are used to close off open ends of horizontal straight duct pathways to keep fibre cables protected and secured.

Features and benefits

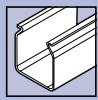
- Secures open ends and protects against contamination
- Maintains attractive aesthetics by enclosing cables throughout the facility



100x100mm End caps.

DUCT SIZE (MM)			
50 X 50	100 X 100	200 X 100	300 X 100
LG-ECDXXX-YL	LG-ECCXXX-YL	LG-ECBXXX-YL	LG-ECAXXX-YL

Subject to technical changes. MOQs apply. Image for illustration purposes only. All measurements in mm unless stated.



Split Flexible Conduit

32mm

Technical Description

Split flexible conduit used in conjunction with outlet adaptors, is easy to install and used to protect fibre drops into racks and cabinets.

Features and benefits

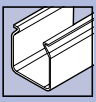
- Compatible with GigaDuct split conduit outlet adaptors
- Provides additional cable protection
- Simplifies cable management
- Increases installation aesthetics



32mm Split Flexible Conduit.

DESCRIPTION		Length (L)	Part No.
Split Flexible Conduit	32mm	5m	LG-32-YL

Subject to technical changes. MOQs apply. Image for illustration purposes only. All measurements in mm unless stated.



Underfloor Mounting Kits

Short and Long Kits

Technical Description

Underfloor mounting brackets are designed specifically to support GigaDuct Fibre Raceway beneath raised floors. These sturdy brackets fix to raised floor pedestals and offer reliable stability, keeping pathways neatly elevated and prevent sagging or displacement



Short underfloor mounting kits.

DESCRIPTION		DUCT SIZE (MM)				Part No.
		50 X 50	100 X 100	200 X 100	300 X 100	
Underfloor Kit (Max compatible rod size 25mm)	Short (130mm)	YES		NO		LGA-UFME
	Long (230mm)	YES				LGA-UFMD

Subject to technical changes. MOQs apply. Image for illustration purposes only. All measurements in mm unless stated.

Ladder Rack and Basket Tray Brackets

Short and Long Kits

Technical Description

Ladder rack and basket tray brackets facilitate the direct mounting of GigaDuct Fibre Raceway off the side, parallel to ladder rack or basket tray cable management systems of various sizes where threaded rods are not required.



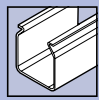
Short ladder bracket kit.



Short basket tray bracket kit.

DESCRIPTION		DUCT SIZE (MM)				Part No.
		50 X 50	100 X 100	200 X 100	300 X 100	
Ladder Bracket Kit	Short	YES		NO		LGA-LRBS
	Long	YES				LGA-LRBL
Basket Tray Bracket Kit	Short	YES		NO		LGA-BTBS
	Long	YES				LGA-BTBL

Subject to technical changes. MOQs apply. Image for illustration purposes only. All measurements in mm unless stated.

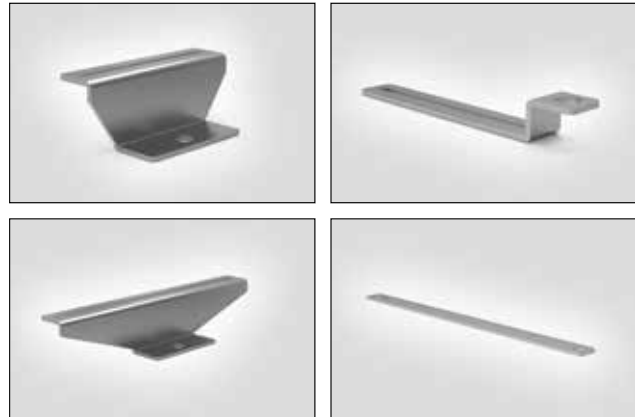


Threaded Rod Mounting Brackets

Centre and Rod Support

Technical Description

Threaded rod mounting brackets offer a simple and practical way to support GigaDuct Fibre Raceway installations in overhead routing applications utilising commonly used threaded rod suspension solutions.



Top left: Short centre support brackets.
Bottom left: Long centre support brackets.

Top right: Single rod support bracket.
Bottom right: Double rod support bracket.

DESCRIPTION		DUCT SIZE (MM)				Part No.
		50 X 50	100 X 100	200 X 100	300 X 100	
Centre Support Bracket	Short	YES		NO		LGA-TRB-CSL
	Long		YES			LGA-TRB-CSL
Rod Support Bracket	Short	YES		NO		LGA-TRB-SRS
	Long		YES			LGA-TRB-DRL

Subject to technical changes. MOQs apply. Image for illustration purposes only. All measurements in mm unless stated.

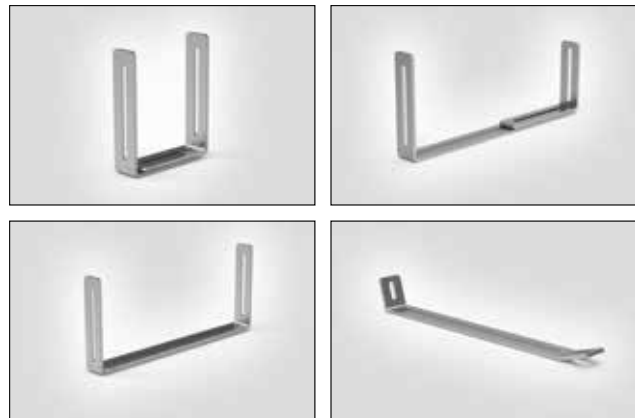
Universal Brackets

Short, Medium and Long Kits

Technical Description

GigaDuct Fibre Raceway universal brackets are engineered for adaptable deployment across numerous applications, with a primary focus on wall-mounted installations.

These brackets are manufactured in three distinct widths. For the longer variant, a diagonal support brace is available to provide additional reinforcement.

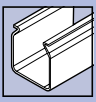


Top left: Short universal bracket kit.
Bottom left: Medium universal bracket kit.

Top right: Long universal bracket kit.
Bottom right: Universal support brace kit.

DESCRIPTION		DUCT SIZE (MM)				Part No.
		50 X 50	100 X 100	200 X 100	300 X 100	
Universal Bracket Kit	Short	YES		NO		LGA-UMBS
	Medium		YES			LGA-UMBM
	Long		YES			LGA-UMBL
Universal Support Brace	Long		YES			LGA-BTBL

Subject to technical changes. MOQs apply. Image for illustration purposes only. All measurements in mm unless stated.



Nuts and Bolts

Pack of 100

Technical Description

While many connections are tool-free, nuts and bolts are available for specific manual joiner applications and to support mounting options. Protective caps are key for protecting coach bolts and maintaining raceway aesthetics.

For efficient setup, the duct's slotted channel is specifically designed to accommodate coach bolts, ensuring quick and simple mounting.



Duct features a slotted channel that accepts the coach bolt to provide a quick and easy mounting assembly.

*Top right: M6 x 20mm coach bolt & nut kit.
Bottom right: Protective cap.*

DESCRIPTION		Part No.
M6 x 20mm Coach Bolt and Nut Kit	Pack of 100	LGA-CB-H
Protective Cap	Pack of 100	LGA-CY-H

Subject to technical changes. MOQs apply. Image for illustration purposes only. All measurements in mm unless stated.

Next-gen solutions for future-ready data centres

RapidNet ULTRA is the new and evolved pre-terminated solution from HellermannTyton. With a range of cassette formats and fibre assemblies, RapidNet ULTRA delivers high performance and fibre capacity to meet the demands of the modern-day data centre.

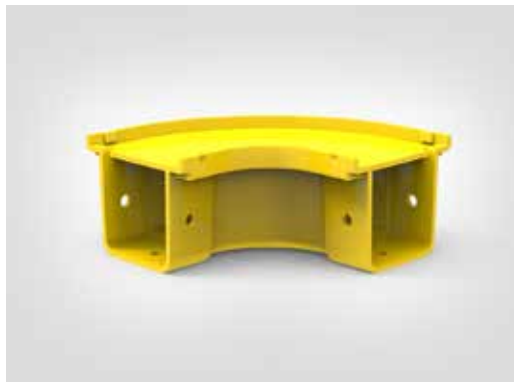
- Best in class ultra low loss connectivity
- Effortless Plug & Play system
- Factory pre-terminated and tested
- Available in ULTRA12 and ULTRA8 versions
- Cassette housing and fibre assembly options

RAPIDNET®
ULTRA

HellermannTyton

www.htdata.co.uk/rnu





HellermannTyton

HellermannTyton Data Ltd – UK
Waterside House,
Edgar Mobbs Way
Northampton NN5 5JE
Tel.: +44 1604 707 420
Email: sales@htdata.co.uk
www.htdata.co.uk