

## RapidNet 6 Port Category 5e UTP

### Short Body Cassette to Short Body Cassette

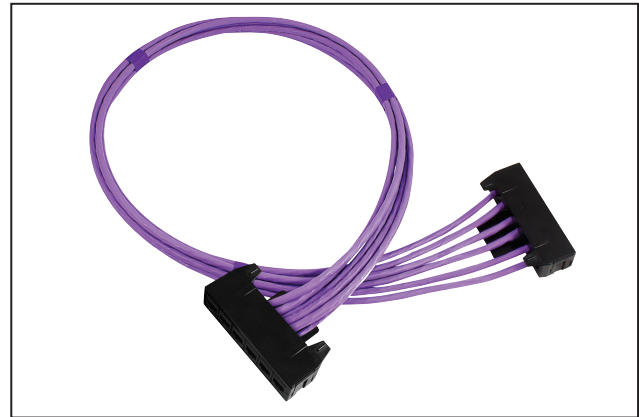
#### Application/Product Description

The HellermannTyton Category 5e Short Body GST Cassette to Short Body GST Cassette is pre-terminated with 6 GST RJ45 ports within the cassette. Each cassette presents 6 GST RJ45 ports in one cassette with the loom being terminated with a cassette at each end.

The Category 5e RapidNet looms are designed and tested to support Primary (Campus), Secondary (Riser) and Tertiary (Horizontal) applications for 10Base-T (Ethernet), 100Base-T(Fast Ethernet), 1000Base-T(Gigabit Ethernet), PoE and PoE+.

When used with HellermannTyton Category 5e patch panels, outlets and patch leads the combined performance exceeds Category 5e/Class D link and channel requirements.

RapidNet Category 5e looms are available in lengths from 5m to 90m.



RapidNet Category 5e UTP Cassette to Cassette

#### Cable Specification

Electrical Characteristics @ 20°C	Specification
DC Loop Resistance	≤169Ω/km
Resistance Unbalance	≤2%
Insulation Resistance (500V)	≥2000MΩxkm
Capacitance at 800Hz	Nom. 43nF/km
Capacitance Unbalance (pair to ground)	≤1500pF/km
Characteristic Impedance (1-100MHz)	(100 ± 15)Ω
Nominal Velocity of Propagation	Approx. 66%
Propagation Delay	Nom. ≤427ns/100m
Delay Skew	Nom. ≤12ns/100m
Test Voltage (DC, 1 min) Core/Core	1000v

#### Cable and Cassette Standards

##### Cable

- BS EN 50173
- ISO 11801:2002 (inc. Amend. A1 & A2)
- ANSI/TIA/EIA 568-C.2
- IEC 61156-5
- BS EN 50288-10-1

##### Cable Sheath

- IEC 60332-1
- IEC 60754-2
- IEC 61034

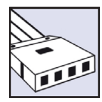
##### Category 5e Cassette

- ISO 11801:2002 (inc. Amend. A1 & A2)
- BS EN 50173
- ANSI/TIA/EIA 568-C.2

#### RapidNet Loom Performance Characteristics

Frequency (MHz)		1	10	100
Insertion Loss (dB/100m)	Spec	3.0	6.2	21.0
	Typical	1.6	5.0	16.3
NEXT (dB)	Spec	60.0	48.5	32.3
	Typical	83.5	70.7	54.2
ACR-N (dB)	Spec	57.0	42.3	11.3
	Typical	82.0	65.7	38.0
Return Loss (dB)	Spec	19.0	19.0	12.0
	Typical	27.6	38.1	30.8
PS-NEXT (dB)	Spec	57.0	45.5	29.3
	Typical	78.2	65.0	49.0
PS ACR-N (dB)	Spec	54.0	39.3	8.3
	Typical	76.6	60.0	32.7
ACR-F (dB/100m)	Spec	58.6	38.6	18.6
	Typical	78.0	57.9	39.5
PS ACR-F (dB/100m)	Spec	55.6	35.6	15.6
	Typical	72.3	52.5	34.2

\*Typical values are for permanent link tests when using the complete HellermannTyton Data System.

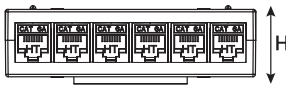


**Cassette Specification**

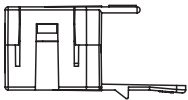
<b>Port Count</b>	6		
<b>Dimensions (mm)</b>	H	W	D
	27.0	102.0	60.0
<b>Outlet Style</b>	GST RJ45		
<b>RJ45 Jack Life</b>	Minimum Insertions 1000		

Cassette Materials		Jack Materials	
<b>Cassette Cover</b>	Polycarbonate ABS	<b>Modular Jack Housing</b>	Polybutylene
<b>Colour</b>	Black	<b>Contacts</b>	Copper Alloy/Selected Gold Plate

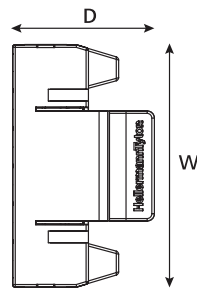
**Technical Diagrams**



Front view



Side view



Top view