

## RapidNet 6 Port Category 5e UTP

### Short Body Cassette to GST Keystone Jack

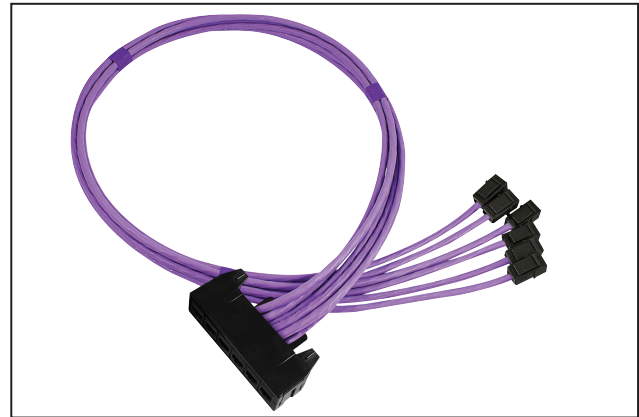
#### Application/Product Description

The HellermannTyton Category 5e GST Short Body Cassette to Bare End is pre-terminated with 6 GST RJ45 ports within the cassette GST and the other end is left unterminated.

The Category 5e RapidNet looms are designed and tested to support Primary (Campus), Secondary (Riser) and Tertiary (Horizontal) applications for 10Base-T (Ethernet), 100Base-T(Fast Ethernet), 1000Base-T(Gigabit Ethernet), PoE and PoE+.

When used with HellermannTyton Category 5e patch panels, outlets and patch leads the combined performance exceeds Category 5e/Class D link and channel requirements.

RapidNet Category 5e looms are available in lengths from 5m to 90m.



RapidNet Category 5e UTP Short Body Cassette to GST Keystone Jack

#### Cable Specification

Electrical Characteristics @ 20°C	Specification
DC Loop Resistance	≤169Ω/km
Resistance Unbalance	≤2%
Insulation Resistance (500V)	≥2000MΩxkm
Capacitance at 800Hz	Nom. 43nF/km
Capacitance Unbalance (pair to ground)	≤1500pF/km
Characteristic Impedance (1-100MHz)	(100 ± 15)Ω
Nominal Velocity of Propagation	Approx. 66%
Propagation Delay	Nom. ≤427ns/100m
Delay Skew	Nom. ≤12ns/100m
Test Voltage (DC, 1 min) Core/Core	1000v

#### Cable and Cassette Standards

##### Cable

- BS EN 50173
- ISO 11801:2002 (inc. Amend. A1 & A2)
- ANSI/TIA/EIA 568-C.2
- IEC 61156-5
- BS EN 50288-10-1

##### Cable Sheath

- IEC 60332-1
- IEC 60754-2
- IEC 61034

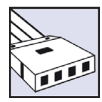
##### Category 5e Cassette

- ISO 11801:2002 (inc. Amend. A1 & A2)
- BS EN 50173
- ANSI/TIA/EIA 568-C.2

#### RapidNet Loom Performance Characteristics

Frequency (MHz)		1	10	100
Insertion Loss (dB/100m)	Spec	3.0	6.2	21.0
	Typical	1.6	5.0	16.3
NEXT (dB)	Spec	60.0	48.5	32.3
	Typical	83.5	70.7	54.2
ACR-N (dB)	Spec	57.0	42.3	11.3
	Typical	82.0	65.7	38.0
Return Loss (dB)	Spec	19.0	19.0	12.0
	Typical	27.6	38.1	30.8
PS-NEXT (dB)	Spec	57.0	45.5	29.3
	Typical	78.2	65.0	49.0
PS ACR-N (dB)	Spec	54.0	39.3	8.3
	Typical	76.6	60.0	32.7
ACR-F (dB/100m)	Spec	58.6	38.6	18.6
	Typical	78.0	57.9	39.5
PS ACR-F (dB/100m)	Spec	55.6	35.6	15.6
	Typical	72.3	52.5	34.2

\*Typical values are for permanent link tests when using the complete HellermannTyton Data System.

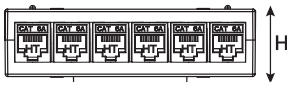


**Cassette Specification**

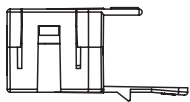
<b>Port Count</b>	6		
<b>Dimensions (mm)</b>	H	W	D
	27.0	102.0	60.0
<b>Outlet Style</b>	GST RJ45		
<b>RJ45 Jack Life</b>	Minimum Insertions 1000		

Cassette Materials		Jack Materials	
<b>Cassette Cover</b>	Polycarbonate ABS	<b>Modular Jack Housing</b>	Polybutylene
<b>Colour</b>	Black	<b>Contacts</b>	Copper Alloy/Selected Gold Plate

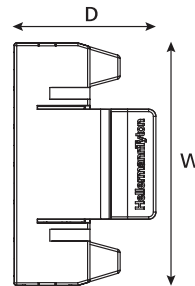
**Technical Diagrams**



Front view



Side view



Top view