

RapidNet 6 Port Category 5e UTP

Short Body Cassette to RJ45 Plug

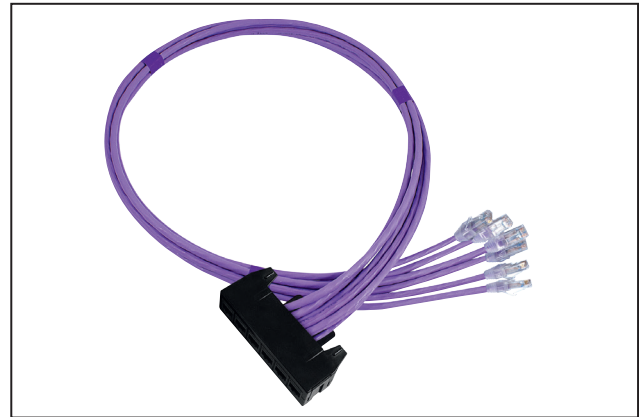
Application/Product Description

The HellermannTyton Category 5e Short Body GST Cassette to RJ45 Plug is pre-terminated with 6 GST RJ45 ports within the cassette and with 6 RJ45 plugs at the other end.

The Category 5e RapidNet looms are designed and tested to support Primary (Campus), Secondary (Riser) and Tertiary (Horizontal) applications for 10Base-T (Ethernet), 100Base-T(Fast Ethernet), 1000Base-T(Gigabit Ethernet), PoE and PoE+.

When used with HellermannTyton Category 5e patch panels, outlets and patch leads the combined performance exceeds Category 5e/Class D link and channel requirements.

RapidNet Category 5e looms are available in lengths from 1m to 90m.



RapidNet Category 5e UTP Short Body Cassette to RJ45 Plug

Cable Specification

| Electrical Characteristics @ 20°C | Specification |
|--|------------------|
| DC Loop Resistance | ≤169Ω/km |
| Resistance Unbalance | ≤2% |
| Insulation Resistance (500V) | ≥2000MΩxkm |
| Capacitance at 800Hz | Nom. 43nF/km |
| Capacitance Unbalance (pair to ground) | ≤1500pF/km |
| Characteristic Impedance (1-100MHz) | (100 ± 15)Ω |
| Nominal Velocity of Propagation | Approx. 66% |
| Propagation Delay | Nom. ≤427ns/100m |
| Delay Skew | Nom. ≤12ns/100m |
| Test Voltage (DC, 1 min) Core/Core | 1000v |

Cable and Cassette Standards

Cable

- BS EN 50173
- ISO 11801:2002 (inc. Amend. A1 & A2)
- ANSI/TIA/EIA 568-C.2
- IEC 61156-5
- BS EN 50288-10-1

Cable Sheath

- IEC 60332-1
- IEC 60754-2
- IEC 61034

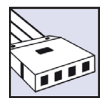
Category 5e Cassette

- ISO 11801:2002 (inc. Amend. A1 & A2)
- BS EN 50173
- ANSI/TIA/EIA 568-C.2

RapidNet Loom Performance Characteristics

| Frequency (MHz) | | 1 | 10 | 100 |
|--------------------------|---------|------|------|------|
| Insertion Loss (dB/100m) | Spec | 3.0 | 6.2 | 21.0 |
| | Typical | 1.6 | 5.0 | 16.3 |
| NEXT (dB) | Spec | 60.0 | 48.5 | 32.3 |
| | Typical | 83.5 | 70.7 | 54.2 |
| ACR-N (dB) | Spec | 57.0 | 42.3 | 11.3 |
| | Typical | 82.0 | 65.7 | 38.0 |
| Return Loss (dB) | Spec | 19.0 | 19.0 | 12.0 |
| | Typical | 27.6 | 38.1 | 30.8 |
| PS-NEXT (dB) | Spec | 57.0 | 45.5 | 29.3 |
| | Typical | 78.2 | 65.0 | 49.0 |
| PS ACR-N (dB) | Spec | 54.0 | 39.3 | 8.3 |
| | Typical | 76.6 | 60.0 | 32.7 |
| ACR-F (dB/100m) | Spec | 58.6 | 38.6 | 18.6 |
| | Typical | 78.0 | 57.9 | 39.5 |
| PS ACR-F (dB/100m) | Spec | 55.6 | 35.6 | 15.6 |
| | Typical | 72.3 | 52.5 | 34.2 |

*Typical values are for permanent link tests when using the complete HellermannTyton Data System.

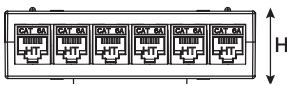


Cassette Specification

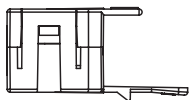
| | | | |
|------------------------|-------------------------|-------|------|
| Port Count | 6 | | |
| Dimensions (mm) | H | W | D |
| | 27.0 | 102.0 | 60.0 |
| Outlet Style | GST RJ45 | | |
| RJ45 Jack Life | Minimum Insertions 1000 | | |

| Cassette Materials | | Jack Materials | |
|-----------------------|-------------------|-----------------------------|----------------------------------|
| Cassette Cover | Polycarbonate ABS | Modular Jack Housing | Polybutylene |
| Colour | Black | Contacts | Copper Alloy/Selected Gold Plate |

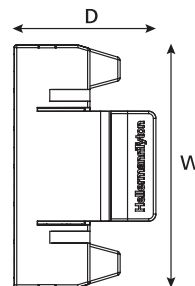
Technical Diagrams



Front view



Side view



Top view