



RapidNet 6 Port Category 6A U/FTP

Cassette to Keystone Jack

Application/Product Description

The HellermannTyton Deca¹⁰ Cassette to Keystone Jack is pre-terminated with 6 Deca¹⁰ keystone jacks. The keystone jacks within the cassette are earthed to a plate within the cassette and the Deca¹⁰ Cassette presents 6 RJ45 ports in one cassette, the other end is terminated with 6 Deca¹⁰ keystone jacks.

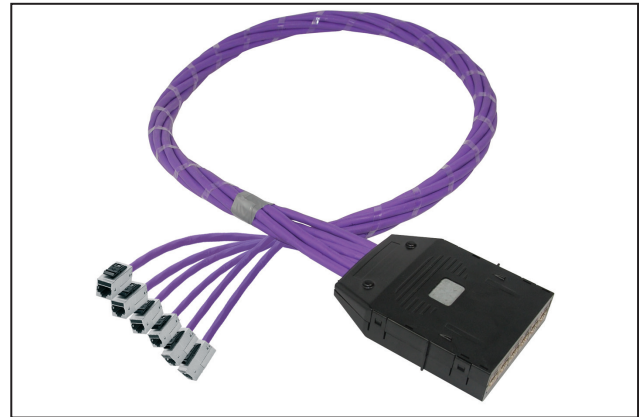
The Category 6A RapidNet looms are designed and tested to support Primary (Campus), Secondary (Riser) and Tertiary (Horizontal) applications for 10Base-T (Ethernet), 100Base-T (Fast Ethernet), 1000Base-T (Gigabit Ethernet), 10GBase-T (10-Gigabit Ethernet), PoE and PoE+.

When used with HellermannTyton Category 6A RapidNet patch panels, outlets and patch leads the combined performance exceeds Category 6A/Class EA link and channel requirements.

RapidNet Category 6A looms are available in lengths from 5m to 90m.

Cable Specification

Electrical Characteristics @ 20°C	Specification
DC Loop Resistance	≤165Ω/km
Resistance Unbalance	≤2%
Insulation Resistance (500V)	≥2000MΩ x km
Capacitance at 800Hz	Nom. 43nF/km
Capacitance Unbalance (pair to ground)	≤1500pF/km
Characteristic Impedance (1-100MHz)	(100 ± 15)Ω
Nominal Velocity of Propagation	Approx. 66%
Propagation Delay	Nom. ≤427ns/100m
Delay Skew	Nom. ≤12ns/100m
Test Voltage (DC, 1 min) Core/Core	1000v



RapidNet Category 6A Cassette to Keystone Jack

Cable and Cassette Standards

Cable

- BS EN 50173
- ISO 11801:2002 (inc. Amend. A1 & A2)
- ANSI/TIA/EIA 568-C.2
- IEC 61156-5
- BS EN 50288-10-1

Cable Sheath

- IEC 60332-1
- IEC 60754-2
- IEC 61034

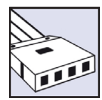
Category 6A Cassette

- ISO 11801:2002 (inc. Amend. A1 & A2)
- BS EN 50173
- ANSI/TIA/EIA 568-C.2

RapidNet Loom Performance Characteristics

Frequency (MHz)		1	250	500
Insertion Loss (dB/100m)	Spec	3.0	29.5	43.8
	Typical	1.7	22.7	33.0
NEXT (dB)	Spec	65.0	35.3	26.7
	Typical	89.4	45.9	39.9
ACR-N (dB)	Spec	62.0	5.8	-17.1
	Typical	87.7	23.2	6.9
Return Loss (dB)	Spec	19.1	10.0	8.0
	Typical	24.0	25.0	18.6
PS-NEXT (dB)	Spec	62.0	32.7	23.8
	Typical	84.0	41.0	34.4
PS ACR-N (dB)	Spec	59.0	3.2	-20.0
	Typical	82.3	18.3	1.4
ACR-F (dB/100m)	Spec	64.2	16.2	10.2
	Typical	80.6	39.1	35.9
PS ACR-F (dB/100m)	Spec	61.2	13.2	7.2
	Typical	75.3	33.5	30.0

*Typical values are for permanent link tests when using the complete HellermannTyton Data System.

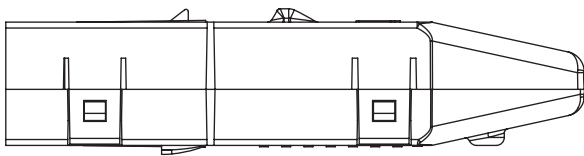


Cassette Specification

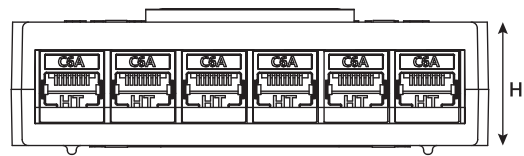
Port Count	6		
Dimensions (mm)	H	W	D
	31.0	107.0	130.0
Outlet Style	RJ45		
RJ45 Jack Life	Minimum Insertions 1000		

Cassette Materials		Jack Materials	
Cassette Cover	Polycarbonate ABS	Modular Jack Housing	Zinc Alloy
Colour	Black	Colour	Nickel
Earth Plate	Zinc Plated Steel	Contacts	Phosphor Bronze Nickel Plated with Selective Gold

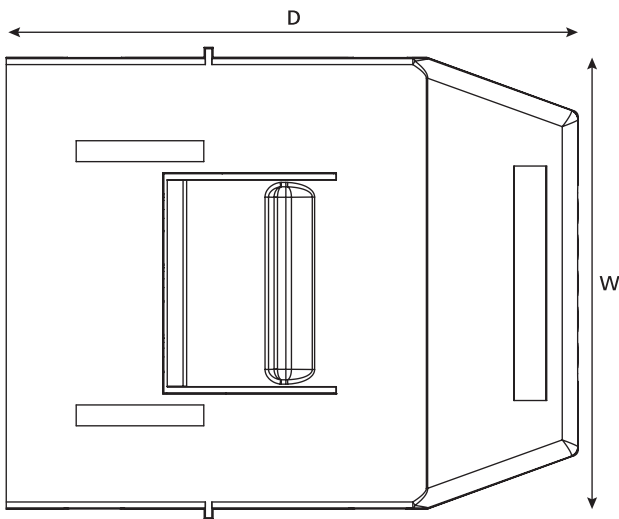
Technical Diagrams



Side view



Front view



Top view