



RapidNet 6 Port Category 6A U/FTP

Cassette to RJ45 Plug

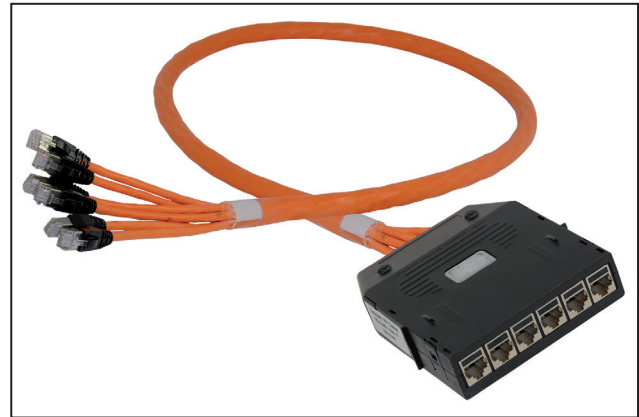
Application/Product Description

The HellermannTyton Deca¹⁰ Cassette to RJ45 Plug is pre-terminated with 6 Deca¹⁰ keystone jacks. The keystone jacks within the cassette are earthed to a plate within the cassette and the Deca¹⁰ Cassette presents 6 RJ45 ports in one cassette, the other end is terminated with 6 RJ45 plugs.

The Category 6A RapidNet looms are designed and tested to support Primary (Campus), Secondary (Riser) and Tertiary (Horizontal) applications for 10Base-T (Ethernet), 100Base-T(Fast Ethernet), 1000Base-T(Gigabit Ethernet), 10GBase-T(10-Gigabit Ethernet), PoE and PoE+.

When used with HellermannTyton Category 6A RapidNet patch panels, outlets and patch leads the combined performance exceeds Category 6A/Class EA link and channel requirements.

RapidNet Category 6A looms are available in lengths from 1m to 70m.



RapidNet Category 6A Cassette to RJ45 Plug

Cable Specification

| Electrical Characteristics @ 20°C | Specification |
|--|------------------|
| DC Loop Resistance | ≤165Ω/km |
| Resistance Unbalance | ≤2% |
| Insulation Resistance (500V) | ≥2000MΩ x km |
| Capacitance at 800Hz | Nom. 43nF/km |
| Capacitance Unbalance (pair to ground) | ≤1500pF/km |
| Nominal Velocity of Propagation | Approx. 66% |
| Propagation Delay | Nom. ≤427ns/100m |
| Delay Skew | Nom. ≤12ns/100m |
| Test Voltage (DC, 1 min) Core/Core | 1000v |

Cable and Cassette Standards

Cable

- BS EN 50173
- ISO 11801:2002 (inc. Amend. A1 & A2)
- ANSI/TIA/EIA 568-C.2
- IEC 61156-5
- BS EN 50288-10-1

Cable Sheath

- IEC 60332-1
- IEC 60754-2
- IEC 61034

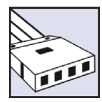
Category 6A Cassette

- ISO 11801:2002 (inc. Amend. A1 & A2)
- BS EN 50173
- ANSI/TIA/EIA 568-C.2

RapidNet Loom Performance Characteristics

| Frequency (MHz) | | 1 | 250 | 500 |
|--------------------------|---------|------|------|-------|
| Insertion Loss (dB/100m) | Spec | 3.0 | 29.5 | 43.8 |
| | Typical | 1.7 | 22.7 | 33.0 |
| NEXT (dB) | Spec | 65.0 | 35.3 | 26.7 |
| | Typical | 89.4 | 45.9 | 39.9 |
| ACR-N (dB) | Spec | 62.0 | 5.8 | -17.1 |
| | Typical | 87.7 | 23.2 | 6.9 |
| Return Loss (dB) | Spec | 19.1 | 10.0 | 8.0 |
| | Typical | 24.0 | 25.0 | 18.6 |
| PS-NEXT (dB) | Spec | 62.0 | 32.7 | 23.8 |
| | Typical | 84.0 | 41.0 | 34.4 |
| PS ACR-N (dB) | Spec | 59.0 | 3.2 | -20.0 |
| | Typical | 82.3 | 18.3 | 1.4 |
| ACR-F (dB/100m) | Spec | 64.2 | 16.2 | 10.2 |
| | Typical | 80.6 | 39.1 | 35.9 |
| PS ACR-F (dB/100m) | Spec | 61.2 | 13.2 | 7.2 |
| | Typical | 75.3 | 33.5 | 30.0 |

*Typical values are for permanent link tests when using the complete HellermannTyton Data System.

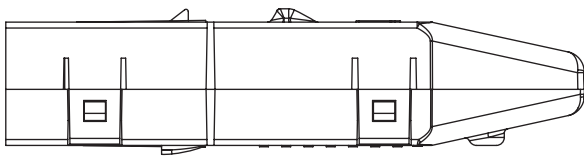


Cassette Specification

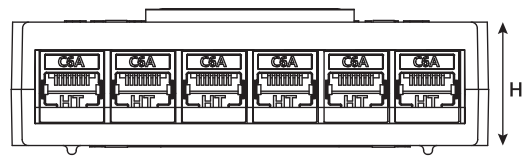
| | | | |
|------------------------|-------------------------|-------|-------|
| Port Count | 6 | | |
| Dimensions (mm) | H | W | D |
| | 31.0 | 107.0 | 130.0 |
| Outlet Style | RJ45 | | |
| RJ45 Jack Life | Minimum Insertions 1000 | | |

| Cassette Materials | | Jack Materials | |
|-----------------------|-------------------|-----------------------------|---|
| Cassette Cover | Polycarbonate ABS | Modular Jack Housing | Zinc Alloy |
| Colour | Black | Colour | Nickel |
| Earth Plate | Zinc Plated Steel | Contacts | Phosphor Bronze Nickel Plated with Selective Gold |

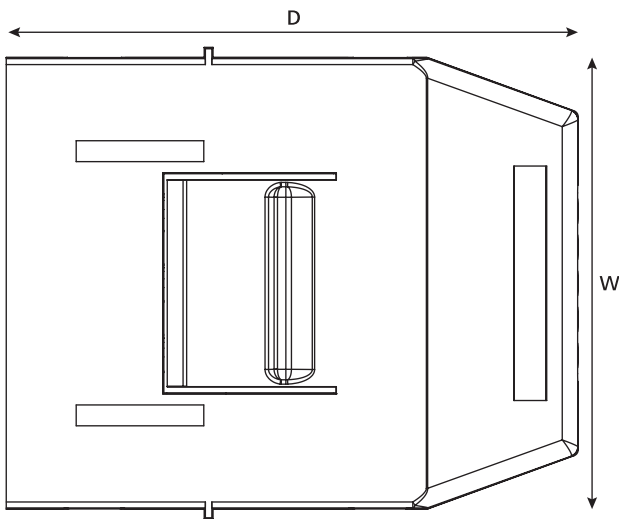
Technical Diagrams



Side view



Front view



Top view