

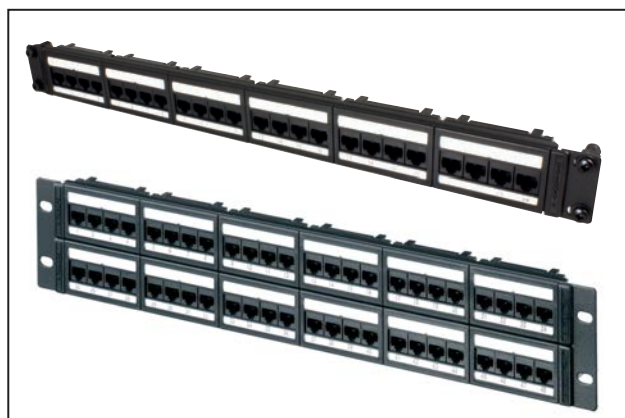


Global Category 6

1U 24 Port and 2U 48 Port

Application/Product Description

Category 6 Global Patch Panels are designed to support Ethernet 10BASE-T, 100BASE-T (Fast Ethernet), 1000BASE-T (Gigabit Ethernet), 155 Mb/s ATM, Token Ring 4/16, voice/data systems and Voice over Internet Protocol (VoIP) systems running over a Category 6 cabling system and is backwards compatible with existing Category 5e, Category 5 and voice network infrastructures.



Global Category 6 Patch Panels

Technical Data

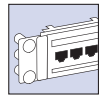
Specification	Category 6					
Conformance	<ul style="list-style-type: none"> ISO 11801:2002 (inc. Amend. A1 & A2) BS EN 50173 ANSI/TIA/EIA 568-C.2 					
Wiring Specification	568A/B					
Port Density	1U 24 Port			2U 48 Port		
Dimensions (mm)	H	W	D	H	W	D
	44	483	31	88	438	31
Panel Weight (g)	602			1098		
Outlet Style	RJ45					
RJ45 Jack Life	Minimum Insertions 1000					
Punch Down Blocks	IDC					
IDC Life	Minimum 50 re-terminations					
Wire Gauge	22-26 AWG (Maximum of 2 wires per contact).					

Material	
Panel	Mild Steel, Black Powder Coated
Modular Jack Housing	Polybutylene
Contacts	ABS/Selected Gold Plate

Performance Characteristics

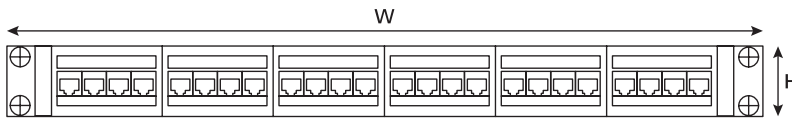
Frequency (MHz)		1	100	250
Insertion Loss	Spec	3.0	18.6	31.1
	Typical	1.5	16.7	27.5
NEXT (dB)	Spec	65.0	41.8	35.3
	Typical	88.6	61.3	53.2
ACR-N (dB)	Spec	62.0	23.3	4.2
	Typical	87.1	44.6	25.7
Return Loss (dB)	Spec	19.1	14.0	10.0
	Typical	26.1	27.7	20.0
PS NEXT (dB)	Spec	62.0	39.3	32.7
	Typical	82.8	55.9	47.8
PS ACR-N (dB)	Spec	59.0	20.7	1.6
	Typical	81.3	39.2	20.3
ACR-F (dB)	Spec	64.2	24.2	16.2
	Typical	81.1	41.2	37.7
PS ACR-F (dB)	Spec	61.2	21.2	13.2
	Typical	75.9	36.2	31.2

*Typical values are for permanent link tests when using the complete HellermannTyton Data System.

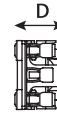


Technical Diagrams

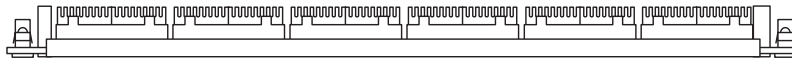
1U 24 Port



Front view

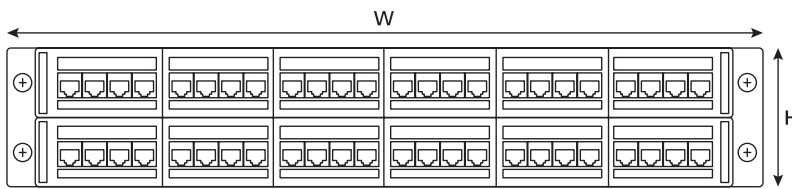


Side view

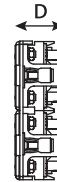


Top view

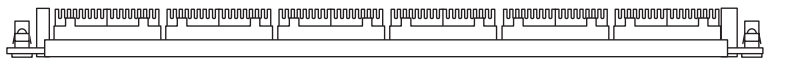
2U 48 Port



Front view



Side view



Top view

This document is subject to change without notice.
The current version available from www.htdata.co.uk/site/products/patch-panels

HellermannTyton Data Ltd
Cornwell Business Park
Salthouse Road, Brackmills
Northampton NN4 7EX
United Kingdom

HellermannTyton

tel: +44 (0) 1604 707420 web: www.htdata.co.uk
Follow us on [in](#) [t](#) @HTData

HT-DS-GLOBAL-CAT-6-PANEL-R10