

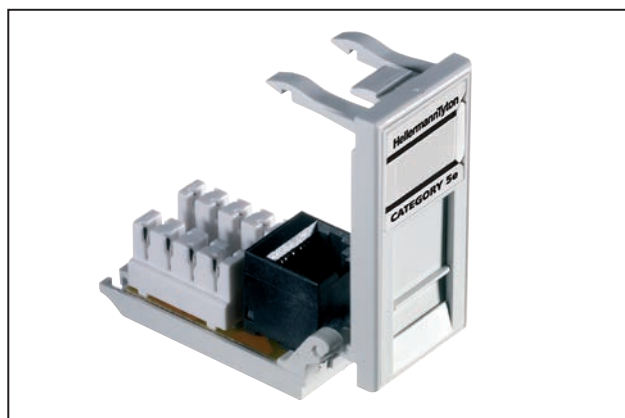


Alpha Snap Category 5e UTP

Low Profile Single Outlet

Application/Product Description

The Alpha Snap Category 5e low profile outlet is designed to support Ethernet 10BASE-T, 100BASE-T (Fast Ethernet), 155 Mb/s ATM, Token Ring 4/16, voice/data systems and Voice over Internet Protocol (VoIP) systems running over a Category 5e cabling system and is backwards compatible with existing Category 5 and voice network infrastructures.



Alpha Snap Category 5e UTP Low Profile Outlet

Technical Data

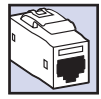
Specification	Category 5e		
Conformance	<ul style="list-style-type: none"> • ISO 11801:2002 (inc. Amend. A1 & A2) • BS EN 50173 • ANSI/TIA/EIA 568-C.2 		
Wiring Specification	568A/B		
Dimensions (mm)	H	W	D
	50.0	25.0	25.0
Weight (g)	16		
Outlet Style	RJ45		
RJ45 Jack Life	Minimum Insertions 1000		
Punch Down Blocks	IDC		
IDC Life	Minimum 50 re-terminations		
Wire Gauge	22-24 AWG (Maximum of 2 wires per contact).		

Material	
Modular Jack Housing	ABS
Housing Colour	White
Contacts	Phosphor Bronze Nickel Plated with Selective Gold

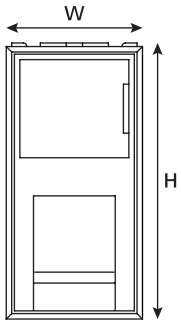
Performance Characteristics

Frequency (MHz)		1	10	100
Insertion Loss	Spec	3.0	6.2	21.0
	Typical	2.1	5.3	17.1
NEXT (dB)	Spec	60.0	48.5	32.3
	Typical	86.0	69.2	45.6
ACR-N (dB)	Spec	57.0	42.3	11.3
	Typical	84.0	63.9	28.5
Return Loss (dB)	Spec	19.0	19.0	12.0
	Typical	26.3	43.7	33.2
PS NEXT (dB)	Spec	57.0	45.5	29.3
	Typical	80.7	64.2	40.5
PS ACR-N (dB)	Spec	54.0	39.3	8.3
	Typical	78.6	58.8	23.3
ACR-F (dB)	Spec	58.6	38.6	18.6
	Typical	81.0	63.6	46.3
PS ACR-F (dB)	Spec	55.6	35.6	15.6
	Typical	75.2	56.8	40.6

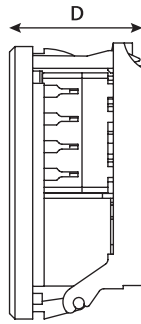
*Typical values are for permanent link tests when using the complete HellermannTyton Data System.



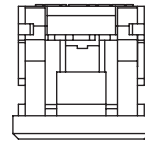
Technical Diagrams



Front view



Side view



Top view