

Category 6 U/UTP 23AWG Unshielded Cable B2ca

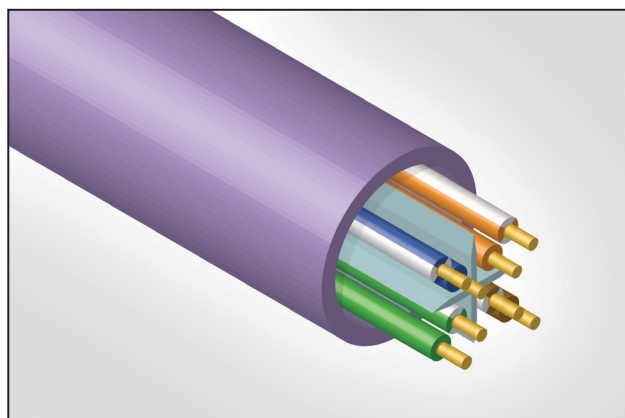
Bulk Copper Cable - CA202

Application/Product Description

HellermannTyton Category 6 cables are designed and tested to support Primary (Campus), Secondary (Riser) and Tertiary (Horizontal) applications for 10Base-T (Ethernet), 100Base-T(Fast Ethernet), 1000Base-T(Gigabit Ethernet), PoE and PoE+.

When used with HellermannTyton Category 6 patch panels, outlets and patch leads the combined performance exceeds Category 6/Class E link and channel requirements.

The cable is supplied in 305m lengths with 1 metre markings on the cable supplied in a box.



CA202 - Category 6 LS0H Unshielded Cable - B2ca

Technical Data

| Electrical Characteristics @ 20°C | Specification |
|--|------------------|
| DC Loop Resistance | ≤154Ω/km |
| Resistance Unbalance | ≤2% |
| Insulation Resistance (500V) | ≥5000MΩxkm |
| Capacitance at 800Hz | Nom. 48nF/km |
| Capacitance Unbalance (pair to ground) | ≤1500pF/km |
| Characteristic Impedance (1-100MHz) | (100 ± 5)Ω |
| Nominal Velocity of Propagation | Approx. 67% |
| Propagation Delay | Nom. ≤535ns/100m |
| Delay Skew | Nom. ≤20ns/100m |
| Test Voltage (DC, 1 min) Core/Core | 1000V |

Cable Standards

Cable

- BS EN 50173
- ISO 11801:2002 (inc. Amend. A1 & A2)
- ANSI/TIA/EIA 568-C.2
- IEC 61156-5
- BS EN 50288-10-1
- CE & UKCA Approved

Cable Sheath

- IEC 60332-1 & 60332-3-24
- IEC 60754-2
- IEC 61034

CPR

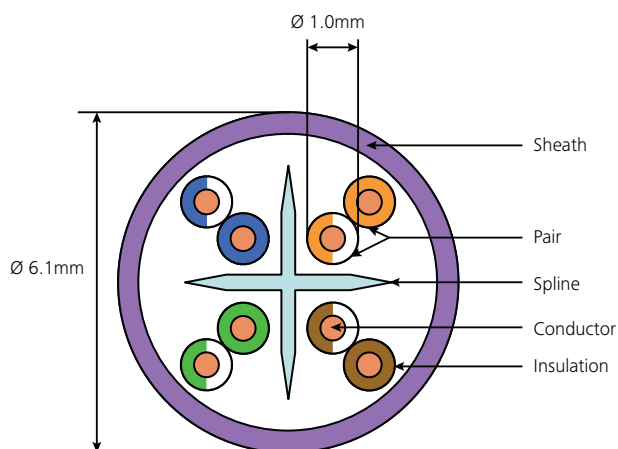
- B2ca, S1a, d1, a1
- Certificate No.: HTC DOP-0026
- Suitable for B2ca, Cca, Dca and Eca specified installations

Performance Characteristics

| Frequency (MHz) | | 1 | 100 | 250 |
|--------------------------|---------|------|------|------|
| Insertion Loss (dB/100m) | Max | 2.1 | 19.9 | 33.0 |
| | Nominal | 1.9 | 19.1 | 32.0 |
| NEXT (dB) | Max | 74.0 | 44.0 | 38.0 |
| | Nominal | 78.0 | 48.0 | 42.0 |
| PS-NEXT (dB) | Max | 72.0 | 42.0 | 36.0 |
| | Nominal | 75.0 | 45.0 | 39.0 |
| ACR-F (dB/100m) | Max | 72.0 | 24.1 | 5.0 |
| | Nominal | 76.1 | 28.9 | 10.0 |
| PS ACR-F (dB/100m) | Max | 70.0 | 22.1 | 2.0 |
| | Nominal | 73.1 | 25.9 | 7.0 |
| Return Loss (dB) | Max | 20.0 | 20.1 | 17.3 |
| | Nominal | 22.0 | 23.0 | 19.0 |

*Typical values are for permanent link tests when using the complete HellermannTyton Data System.

Cable Construction



| Product Performance | |
|-------------------------------------|--|
| Core | |
| Core Conductor | 23 AWG Solid Copper Wire |
| Insulation | Polyethylene |
| Diameter | 1.00mm nominal |
| Twisting | 2 cores to the pair |
| Pair Colour | Blue-White/Blue, Orange-White/Orange, Green-White/Green, Brown-White/Brown |
| Final Assembly | |
| Cable | 4 pairs to the core |
| Sheath | LSHF-FR (FRNC, LSZH) B2ca, S1a, d1, a1 |
| Colour | Violet RAL 4001 |
| Outer Diameter | 6.1mm nominal |
| Mechanical and Environmental | |
| Temp. Installation | 0°C to +50°C |
| Temp. Operation | -20°C to +60°C |
| Min. Bend Radius | |
| | During Installation: 8 x outer diameter |
| | During Operation: 4 x outer diameter |
| Max. Tensile Force | |
| | During Installation 100N |
| Packaged Weight | 14.0kg - 305m Box |