



Fibre Wall Outlet

4 X SC Simplex or LC Duplex Adaptors

Application/Product Description

The Fibre Wall Outlet (FWO) provides a fibre optic cable connection point designed to provide the final connection to the router or active equipment.

The FWO is a small single socket size outlet which is manufactured from Polycarbonate + ABS V0 rated material.

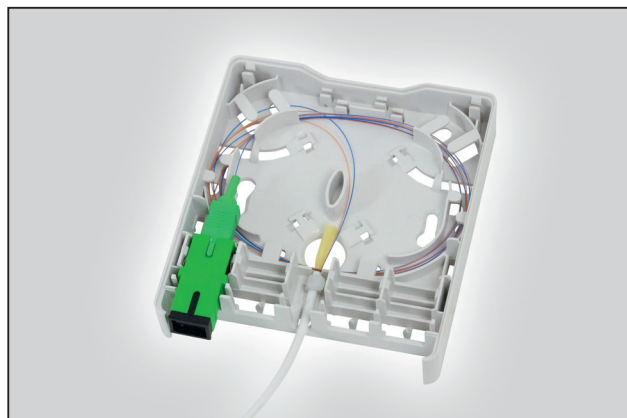
The outlet has cable entry positions at the base, rear and on each side. Designed with fibre management features which ensure a 30mm minimum bend radius and cable tie fixings at all entry ports to provide strain relief.

Tamper-proof latches on the side of the outlet secure the cover to the base and the overhang restricts the removal of any adaptors and connectors when the cover is in place.

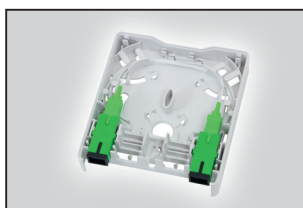
Supplied with 4 output port covers which can be used to provide additional shielding of the adaptors prior to fitting the customer connection cable.

The base has adjustable keyholes to allow for ease of positioning and installation and each outlet is supplied with a standard fixing kit.

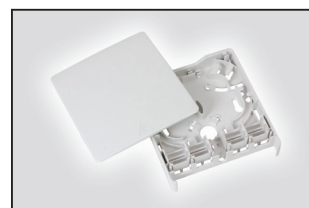
The outlet can be supplied either unloaded, with a pre-terminated connector to bare end connection cable or with adaptors and pigtails.



Fibre Wall Outlet with 1 x SC APC Adaptor and Pre-terminated Drop Cable.



Adaptors and Pigtails Configuration.



Unloaded view.

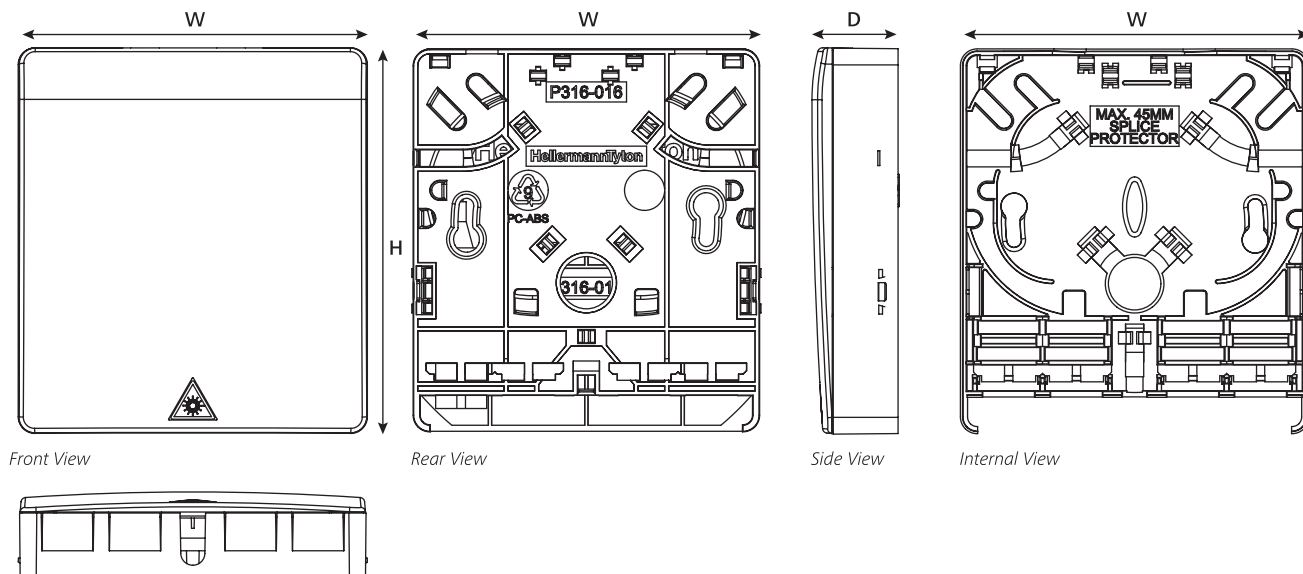
FWOA Technical Data

Dimensions (mm)	H	W	D
	95	86	21
Maximum number of splices	4 (up to 45mm)		
Maximum number of adaptors	4 x SC Simplex or LC Duplex		
Weight (kg)	0.045		
Housing material	Polycarbonate + ABS		
Colour	White		
Mechanical IK protection	IK07		

Features and Benefits:

- Available in 3 configurations
 - Pre-terminated connector to bare end connection cable
 - Adaptors and pigtails
 - Unloaded
- Maximum 8 LC connections (Pre-terminated solution only)
- Maximum 4 3A/ANT splice positions
- 4 cable entry positions
- 30mm minimum bend radius
- Integrated safety features – restricts removal of connectors/adaptors
- V0 rated

Technical Diagrams



Front View

Rear View

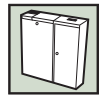
Side View

Internal View

Bottom View

This document is subject to change without notice.

Further information and datasheets at www.htdata.co.uk/products

**Pre-Terminated Solution**

- Maximum of 4 SC or 8 LC connections
- Maximum Adaptor Capacity: 4 SC Simplex / 4 LC Duplex
- Cable entry at the base or rear
- Pre-terminated cable lengths
- 5m – 25m in 5m steps
- 30m – 100m in 10m steps
- Connection cable G657.A1
- Supplied with cable connection(s) fitted in to the adaptor(s)

Cable Specification						
Cable Type	G657.A1					
Number of Fibres	2		4		8	
Nominal Outer Diameter (mm)	3.0±0.15					
Nominal Weight (kg/km)	7.0		8.5		11.5	
Maximum Tensile Strength (N)	Short Term	Long Term	Short Term	Long Term	Short Term	Long Term
	150	80	200	100	300	120
Maximum Crush Resistance (N/100mm)	500			100		
Minimum Bend Radius (mm)	Dynamic			Static		
	20D			10D		

Adaptors and Pigtails

- Maximum of 2 SC or 4 LC connections
- Maximum 4 3A/ANT splices
- Fibre storage capacity
- 4m x 250µm
- 4m x 900µm

Cable Specification	
Cable Type	G657.A1
Nominal Outer Diameter (µm)	900
Cable Colour	White
Cable Length (m)	1.0 ± 150mm
Operating Temperature (°C)	-20 to +60