

MDU - S3S

Fibre Optic Enclosure - Splice Only

Application Information

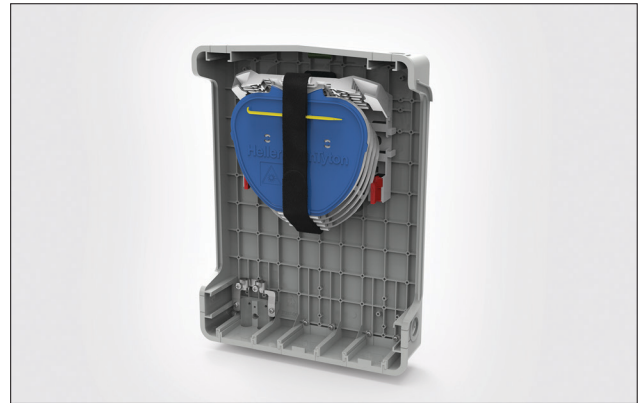
The HellermannTyton S3 Multi-Dwelling Unit (MDU) Splice Only Enclosure is designed for deploying within the last mile of an FTTH network. The S3 is available in numerous configurations of tray styles, port types and optical functions depending on the particular requirements of the operator. The cornerstone of the enclosure is the modular fibre management system (FMS) which is present in many of HellermannTyton's fibre optic solutions. Numerous styles of both splice tray and splice holder are available for point-to-point (P2P) configurations, as well as many options for splitter-based splice trays for more typical passive optical network (PON) requirements.

The various applications of this style of enclosure have led to a number of aspects being adaptable depending on specific requirements of the optical distribution network (ODN). High fibre-count cable ports are deployable in three positions along the base of the enclosure for simple cable-to-cable butt-joint scenarios, as well as multi-drop ports where a more familiar radial solution to numerous dwellings is the design of choice. These port styles are also interchangeable, allowing for many options to be catered for.

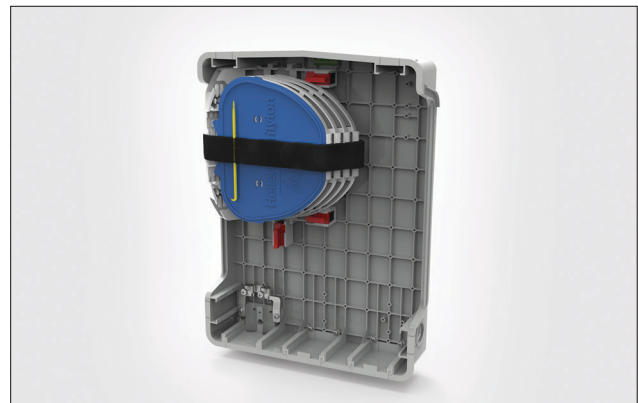
Customer separation can be as important in an MDU as any major metropolitan network and the S3 provides this functionality. With support for 24-splice single-element (SE) and 12-splice single-circuit (SC) splice trays, the S3 delivers across multiple applications. Mass fusion splice options for aggregation-node style deployments along with support for wavelength division multiplexing solutions are also easily accommodated.

Loop storage basket options are available in the S3 family of optical accessories where the enclosure is being deployed at various positions along a single length of fibre cable, often where numerous floors or even buildings are being served from a common fibre ring.

No two MDU environments are the same, and consequently, no two MDU fibre infrastructures have the same design, use the same components or follow the same routes. With this in mind HellermannTyton have created a highly customisable MDU eco-system which includes a number of optional accessories and associated products that ensure we have a solution for every situation. These include UV and UL94 V0 materials for both inside and outside installations, B2ca compliant corridor cables for single dwelling drop-offs, face plates for connector presentation at the customer's optical network unit (ONU) and connectorised enclosures to ensure maximum flexibility within any deployment.



MDU-S3S Horizontal (4 SE-IR MKII trays).



MDU-S3S Vertical (4 SE-IR MKII trays).



MDU-S3S with lid and optional lock.

Splice trays (SE/SC-B MKII trays shown below)

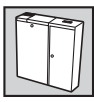


SE-IR MKII 2x3A and 2xANT.

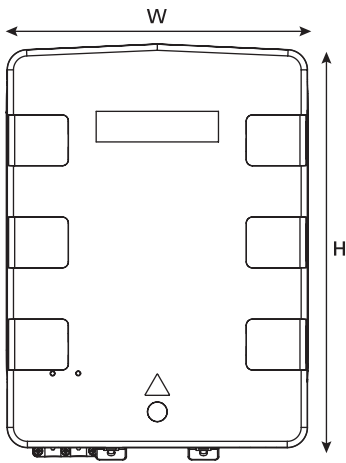
SC-B MKII with Moulded 3A and ANT.

Features and Benefits:

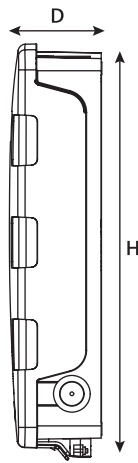
- Indoor/outdoor applications
- Maximum Splice Capacity: 96 (3A or ANT)
- FMS with 4 SE IR trays or 8 SC-B IR trays
- Multi tray orientation configurations (horizontal/vertical)
- 2 or 3 FMS entry points
- Modular cable entry/exit ports
- Fitted Loop Through Anchor Gland with black rubber seals (ø 3-14mm)
- Extensive range of MDU accessories



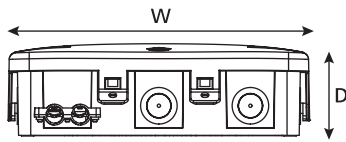
Technical Diagrams



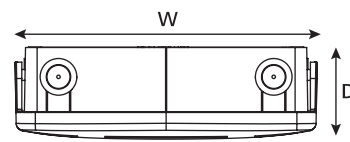
Front view.



Side view.



Base view including loop through cable gland kit.



Top view.

Technical Data

Dimensions (mm)	H	W	D
	340	247	76
IP Rating (Testing for Sealing)	IP54		
Mechanical IK protection	IK08		
Material	Acrylonitrile Butadiene Styrene (ABS)		
Material Properties	UV Stable / UL94 V0		
Colour	Light Grey RAL 7035		
Operating Temperatures	-20°C to +50°C		

Part codes

Part code	FMS			MKII Tray			Max. Splice Capacity	Splice Orientation	Seal Configuration
	Position	Type	Red Entry Points	Qty	Tray Type	Splice Type			
MDU-S3S-C02A1	Central	Small Angled	2	4	SE-IR	3A	96	Horizontal	Loop Through
MDU-S3S-C02B1				8	SC-B				
MDU-S3S-C02C1				4	SE-IR	ANT			
MDU-S3S-C02D1				8	SC-B				
MDU-S3S-L01A1	Left	Small Angled	3	4	SE-IR	3A	96	Vertical	Loop Through
MDU-S3S-L01B1				8	SC-B				
MDU-S3S-L01C1				4	SE-IR	ANT			
MDU-S3S-L01D1				8	SC-B				

MDU-S3S Enclosure Accessories



Entry Seals



Single Cable Entry Kit



Loop Through Cable Kit



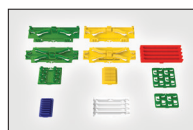
Multi Drop Cable Seals



Drop Cable Anchor Kit



Unique and Generic Lock Options



Splitter / Splice Holders



Splitters



Pigtails



Internal Loop Storage Basket



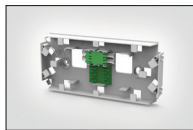
Rear Mounting Loop Basket



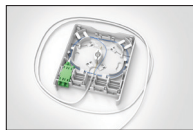
Mounting Basket Pest Guard



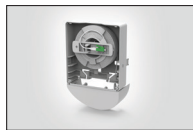
Associated Products



Internal Corridor Box (ICB)



Fibre Wall Outlet (FWO)



FWO Extension Kit (FWOE)



Faint Fibre Outlet (FFO)



MDU Cable (Bare End)



Internal Duct



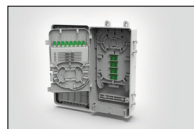
MDU S1XS



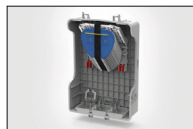
MDU S1



MDU S2



MDU S2 XL



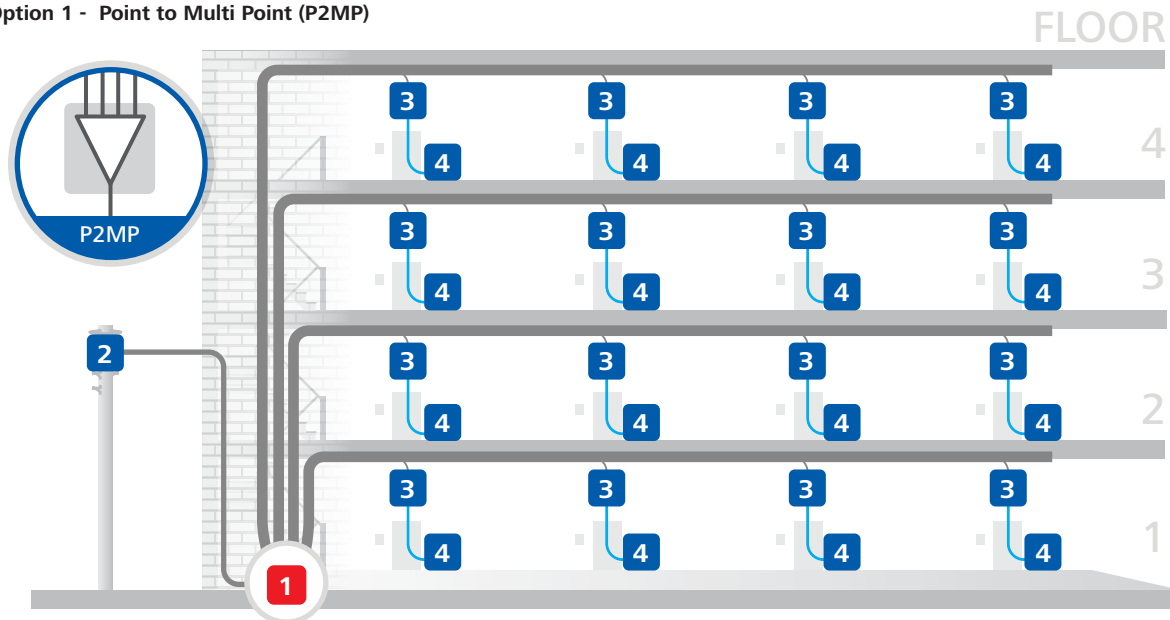
MDU S4



MDU S5

Topology

Option 1 - Point to Multi Point (P2MP)



ENCLOSURES

1 MDU-S3S with splitters

2 AFN / FFE
Aerial distribution box

3 ICB
Internal corridor box

4 FWOA / FWOE / FFO / FFO2.0
Customer wall outlet

CABLE / DUCT

4F Incoming cable (bare end)

8F Corridor drop cable (bare end)

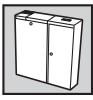
1F Fibre cable

Datasheets and product info



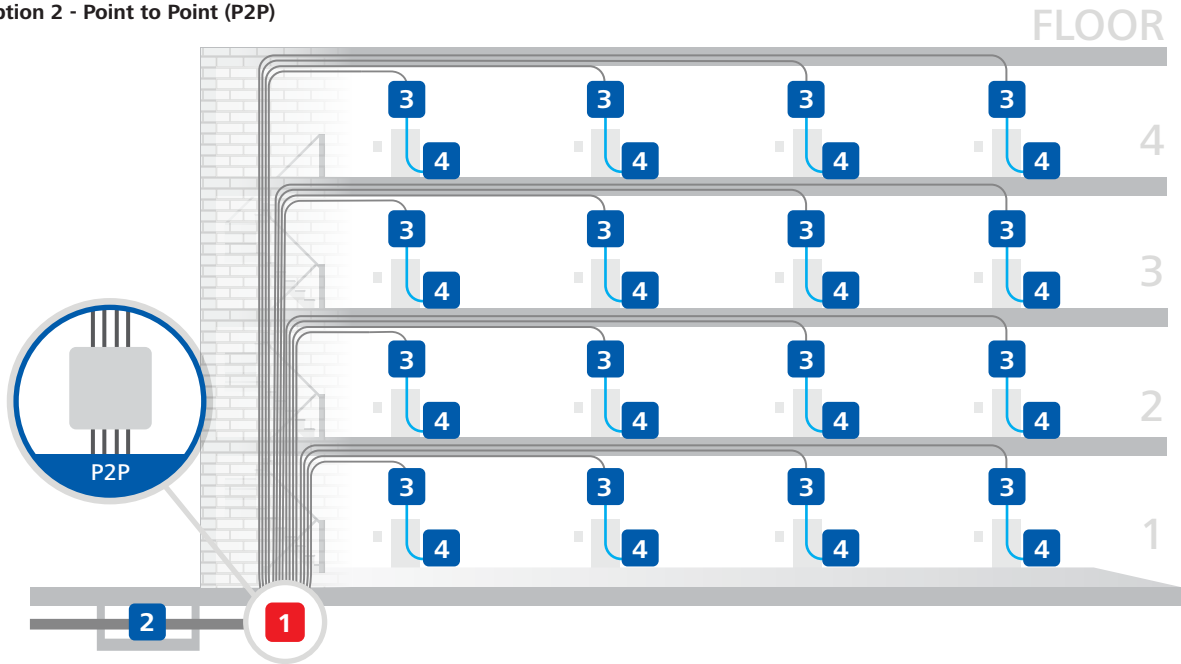
Information about these products can be found online via the QR code or via the link below:
URL link: bit.ly/4fMPjMP

This document is subject to change without notice.
Further information at www.htdata.co.uk



Topology

Option 2 - Point to Point (P2P)



ENCLOSURES

1 MDU-S3S	3 ICB Internal corridor box
2 CFN / FDN / FRBU / FST Underground dome closure	4 FWOA / FWOE / FFO / FFO2.0 Customer wall outlet

CABLE / DUCT

32F Incoming with External Duct (SP-G)
1F Internal Duct (SP-I)
1F Fibre Cable