



Internal Fibre Distribution Enclosure – Connectorised

SC and LC Adaptors

Application/Product Description

The Internal Fibre Distribution Enclosure is used as a Floor Distributor (FD) or as a Building Entry Point (BEP) in order to break out, splice and connect optical fibre cables at the point of entry into a building or to distribute individual fibre circuits to the accommodation/business units on a specific floor or zone of a larger MDU, MBU or for an entry point into smaller buildings.

Using the Internal Fibre Distribution Enclosure in the building and floor areas can simplify the deployment and distribution of the fibres in the backbone infrastructure and speed up customer connections which can be completed when required.

The closure is a three layer unit. The base has multiple cable entry points on all sides to suit different vertical and horizontal mounting positions and to enable the management of mid-span/in-line and cable (butt) end configurations. The base also provides fibre storage capacity. The hinged splice tray can support up to 18 splices (double stacked) and includes features to accommodate passive optical splitters if required. The upper tray has storage for 900µm pigtail cables and fixing points for up to 9 SC duplex or 5 LC quad couplers enabling connectorisation of the backbone cable before connecting customers. Positive fibre management ensures 30mm minimum fibre bend radius is maintained throughout.

The enclosure cover is entirely removable to give clear access to the fibre storage, connector and splice areas. The cover is secured with a twist lock and can be customised with the network operator logo.

Technical Data

| | | | |
|-----------------------------------|------------------------------|-----|----|
| Dimensions (mm) | H | W | D |
| | 154 | 104 | 69 |
| Maximum number of adaptors | 9 x SC Duplex or 5 x LC Quad | | |
| Maximum number of splices | 18 (up to 45mm) | | |
| Weight (kg) | 0.350 | | |
| Housing material | ABS | | |
| Colour | White | | |



Fibre Distribution Enclosure Example Fibred with LC Adaptors

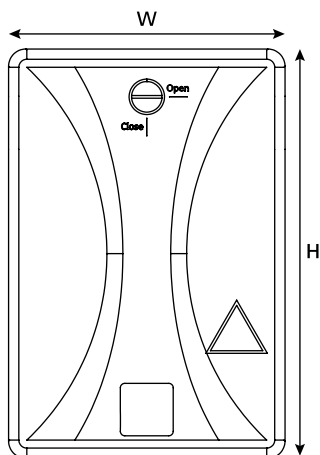
Features and Benefits:

- Suitable for use as a Building Entry Point (BEP) or Floor Distributor (FD) Unit
- 6 cable entry ports around the closure – riser/backbone cables up to 9.0mm
- Up to 18, 45mm 3A splices on dedicated splice tray
- Separate exit area for drop cables with dedicated strain relief features
- Hinged management tray for storing fibre away from the splice management area with a secondary area for the pigtail fibre
- Maintains minimum 30mm bend radii making it suitable for G652D and G657 single mode fibre types
- Splitter management area enables mounting of passive optical splitters
- High quality moulding with smooth curved edges to prevent potential damage to unprotected fibre
- Easy to follow and well supported fibre routes to maintain tangle free fibre management

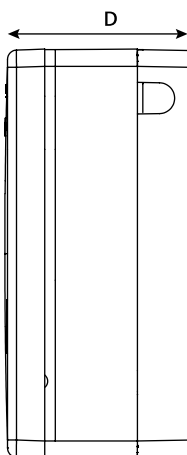
Standard Kit Accessories:

- 2 x Screws
- 12 x Cable Ties
- 1 x Laser Warning Label
- 2 x Double Sided Adhesive Pads

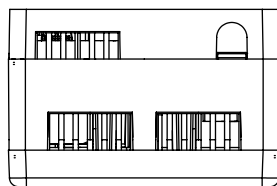
Technical Diagrams



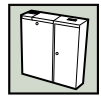
Front View



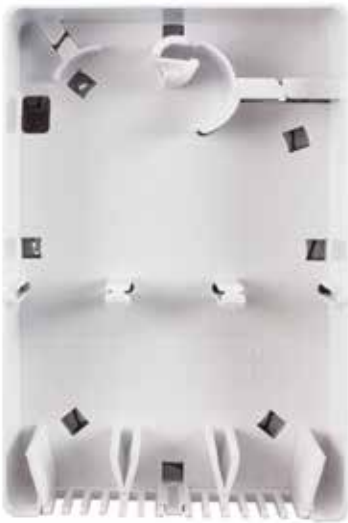
Side View



Base View



Additional Product Images



Layer 1: Connector/Adaptor Tray



Layer 2: Hinged Splice Management Tray



Layer 3: Fibre Storage Area



Rear View

Part Numbers

| Part No. | Description |
|------------|--|
| FDEC-XXXWH | Internal Fibre Distribution Enclosure Connectorised, Unloaded |
| FDEC-9VXWH | Internal Fibre Distribution Enclosure Connectorised, 9 SC APC Duplex Adaptors |
| FDEC-9VPWH | Internal Fibre Distribution Enclosure Connectorised, 9 SC APC Duplex Adaptors and 9 Pigtails |
| FDEC-9WXWH | Internal Fibre Distribution Enclosure Connectorised, 5 LC APC Quad Adaptors |
| FDEC-9WPWH | Internal Fibre Distribution Enclosure Connectorised, 5 LC APC Quad Adaptors and 9 Pigtails |

Other variants are available on request.