

### GigaDuct - Fibre Raceway System

#### Express Waterfall Outlet

#### Application/Product Description

Low-profile express waterfall outlets are easily placed over the sidewall of any new or existing straight duct to create a radius-controlled vertical drop off from a horizontal run.

#### Features and Benefits:

- Supplied as a complete unit
- Provides a flexible exit point for fibre cable anywhere along horizontal straight duct.
- Designed to maintain correct fibre bend radius
- Tool-free installation

#### Technical Specifications:

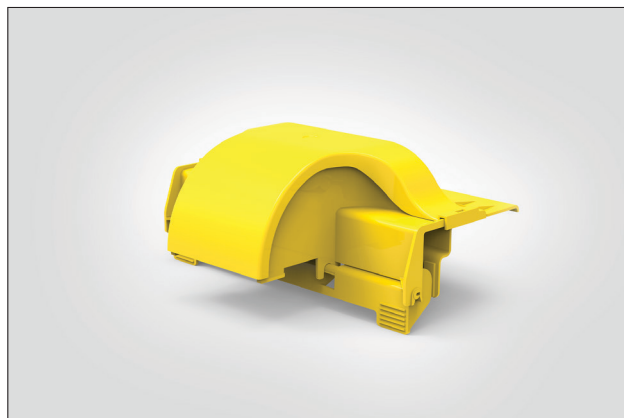
**Product Type:** Outlet

**Colour:** Yellow

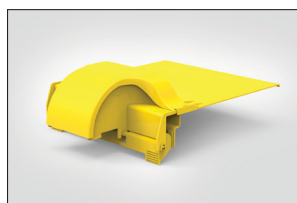
**Material:** Halogen-free

#### Material Standards:

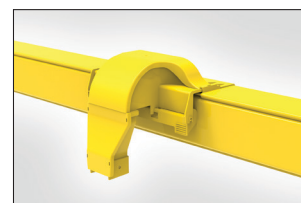
- EN 61249-2-21, IEC 61249-2-21: Non-halogenated Material
- EN 60695-11-10, IEC 60695-11-10: Fire hazard testing
- UL94/V0 plastic flame-retardant
- Directive 2015/65/EU RoHS Compliant
- EC 1907/2006 REACH Compliant
- Suitable for riser and general-purpose applications



Express waterfall outlet for 100mm duct.



Express waterfall outlet for 300mm duct.



Express waterfall outlet with conduit adaptor.

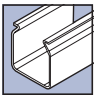


#### Performance Standards:

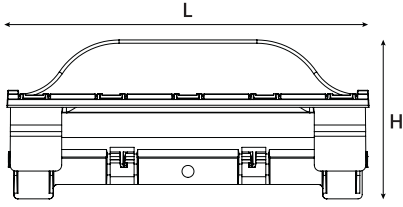
- EN 62368-1, IEC 62368-1: Safety Standard
- ANSI/TIA-942-B, Telecommunications Infrastructure Standard for Data Centres
- ANSI/TIA-569-B, Commercial Building Standard for Telecommunications Pathways and Spaces
- ANSI/UL 2024, Cable Routing Assemblies and Communications Raceways
- CAN/ULC-S143, Standard Method of Fire Tests for Non-Metallic Electrical and Optical Fibre Cable Raceway Systems
- NFPA 70 National Electrical Code (NEC)
- CSA C22.1 Canadian Electrical Code Part 1

PART CODE	DUCT SIZE	Width (W)	Height (H)	Length (L)	UNS
LG-SM1XXX-YL	50 / 100	214	133	302	181-00428
LG-SM2XXX-YL	200	314			181-00421
LG-SM3XXX-YL	300	404			181-00422

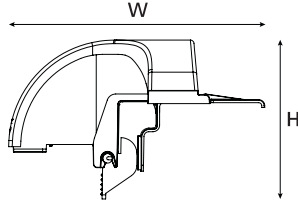
All measurements are in mm unless otherwise stated.



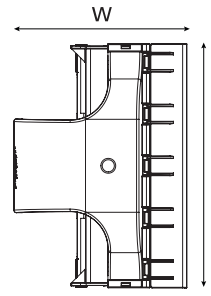
Technical Diagrams:



Rear View



Side View



Top View