

A modular approach to underfloor and ceiling distribution

A low-profile solution for hosting modular copper and fibre connectivity within distributed network architectures.

The enclosure provides reliable and resilient network connections, as well as high performance in a number of applications where additional patching is required.

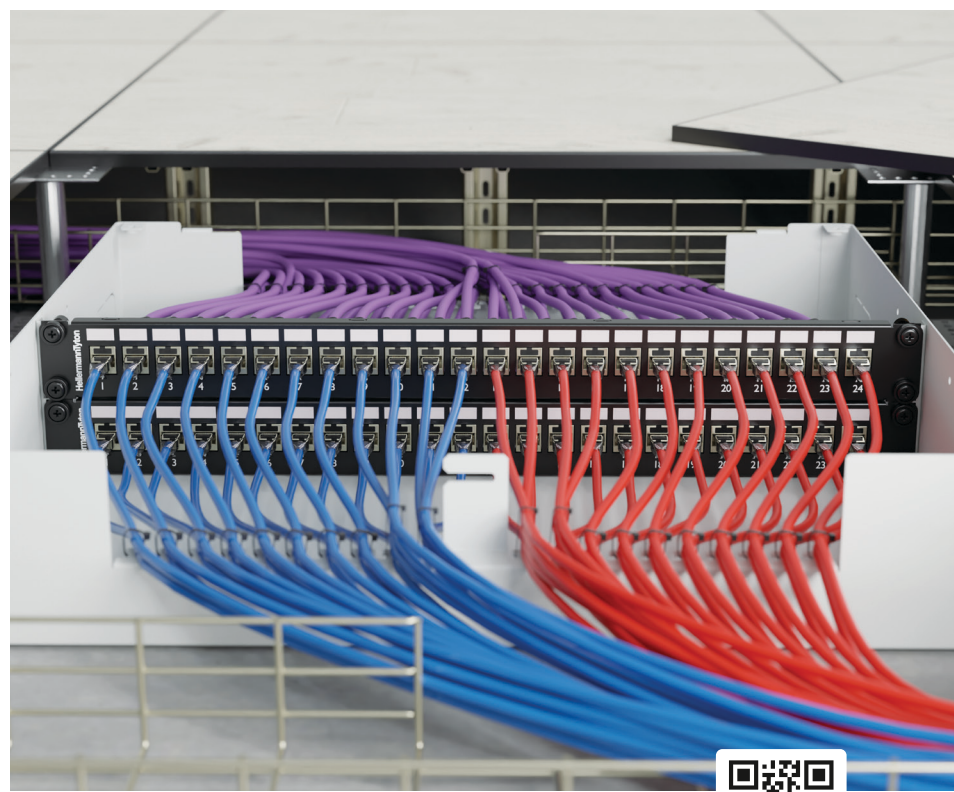
Highlights

LOW
profile

2U
rack space

Hinged
Removable
LID

RAPIDNET
compatible



Purpose-built to facilitate a "plug-and-play" infrastructure

Engineered to house RapidNet pre-terminated cassettes, enabling a streamlined transition between backbone cabling and local work areas.



The Zone Cabling Enclosure from HellermannTyton provides up to 2U of patching space within the 600mm x 600mm area of a floor, ceiling tile or even on the wall.

Modular System Compatibility: The zone cabling enclosure provides support for any standard 19" patch panels or active equipment as well as RapidNet panels for use with the pre-terminated cassette based solution.

Ease of Access: The zone cabling enclosure has a hinged and removable top access door along with removable covers and interchangeable brushes on two sides. The enclosure can be secured to raised floor pillars, concrete flooring or ceiling tiles and walls; making it extremely versatile in any mounted position. Internally, the zone cabling enclosure has front and rear cable management to support patch leads and manage bend radii.

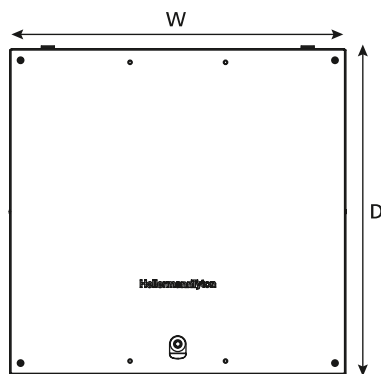
Low-Profile Architecture: The 100mm low-profile enclosure for data centre or office applications where raised floors or suspended ceiling provide suitable hosting space.

Robust Construction: Manufactured from 1.5mm powder-coated mild steel to provide long-term durability in high-traffic utility spaces.

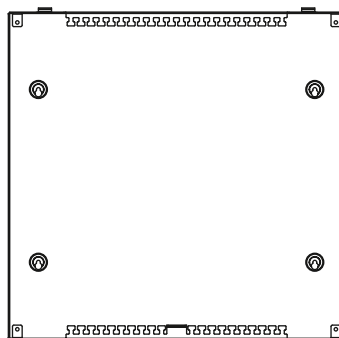
Features and Benefits

- Maximum capacity: 2U of rack space supporting 19" patch panels
- Supports RapidNet panels, standard HellermannTyton copper and fibre panels and active equipment
- Installs below a single 600mm x 600mm floor or above a ceiling tile
- Hinged and removable lid and removable side covers for easy access and installation of brush panels
- Lockable lid for secure access
- Powder coated finish for temperature and humidity protection
- Adjustable mounting ears allow for forward or backward pivot to suit the mounting post position
- Provides additional patching away from the rack space

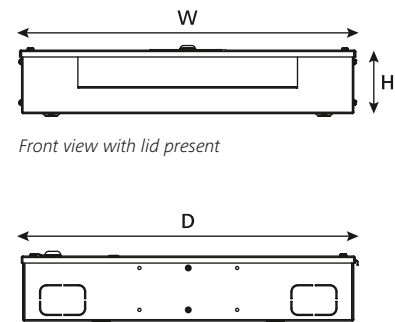
Technical Diagrams



Top external view with lid present



Top internal view with lid removed



Front view with lid present

Side view with lid present

Specifications

Material	Powder Coated Mild Steel		
Colour	Grey		
Dimensions (mm)	H	W	D
	99.8	492	508

Zone Cabling Enclosure Capacity

RAPIDNET	Type	Fibre		Copper	
		MTP	LC	6 Port	12 Port
Maximum Capacities	Per Cassette	144	24	6 Port	12 Port
	Per U	576	96	24	48
	Per 2U	1152	192	48	96

STANDARD PANELS	Type	Fibre		Copper	
		SC DX	LC Quad	24 Port	48 Port
Maximum Capacities	Per U	48	96	24	48
	Per 2U	96	192	48	96