



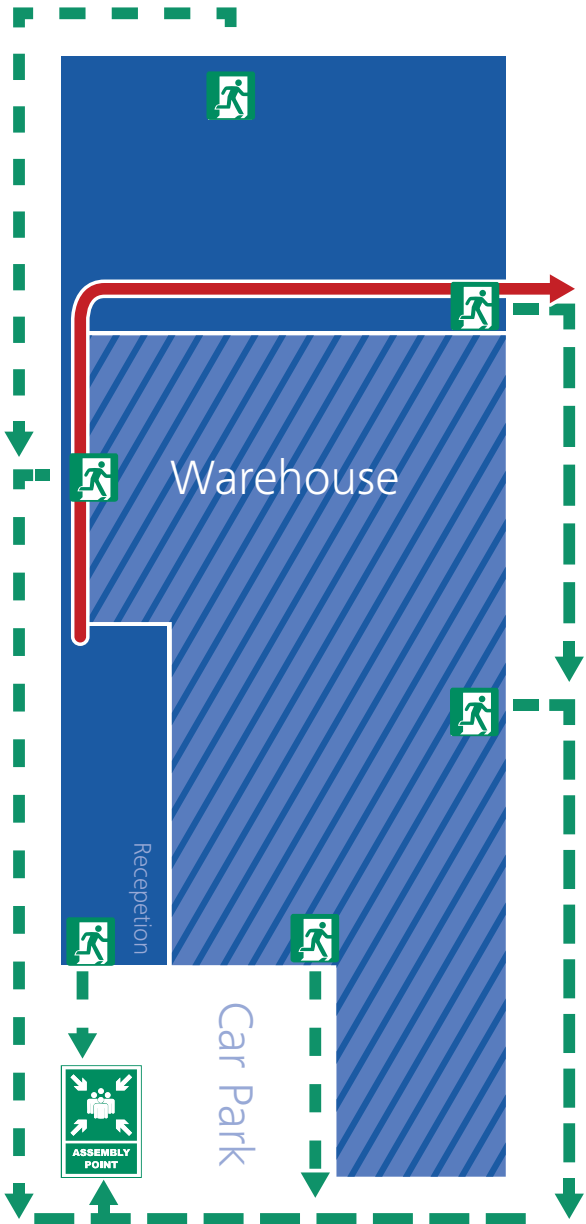
## Site Safety

Visitor & Contractor Information

MADE TO CONNECT

# Nectar Way

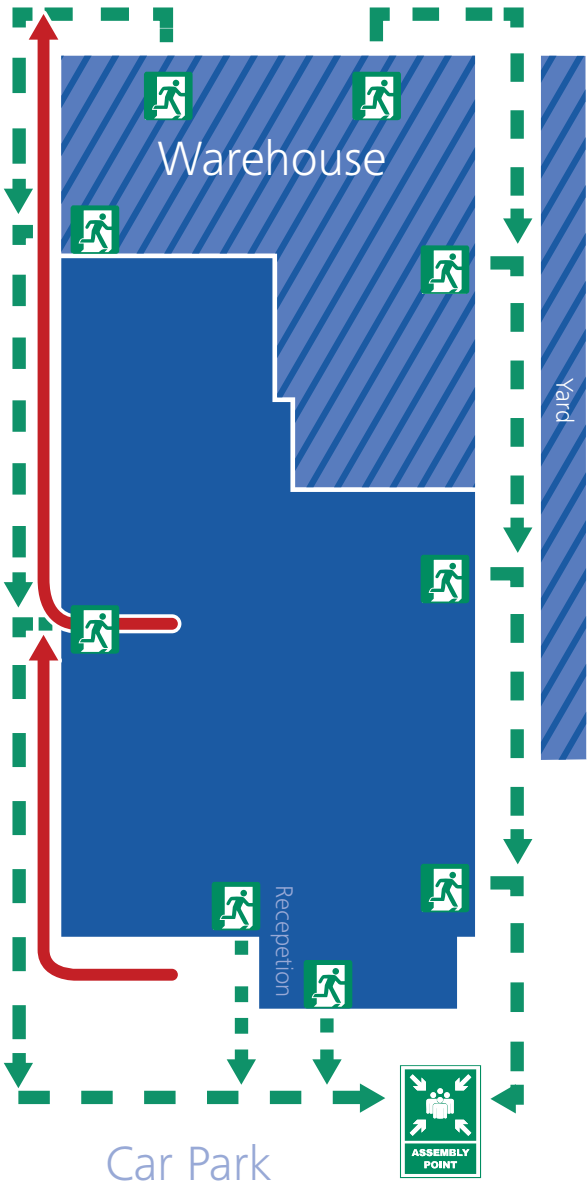
## Pineham Evacuation Routes



-  Essential Access Only
-  Production, Offices and Welfare areas
-  Fibre Deployment
-  Fire Escape + Evacuation Route

# Edgar Mobbs Way

## Waterside Evacuation Routes



-  Essential Access Only
-  Production, Offices and Welfare areas
-  Fibre Deployment
-  Fire Escape + Evacuation Route

## Upon arrival

- Reverse Park.
- Report to reception.
- Sign in.
- Advise your site contact if you are likely to require assistance evacuating in an emergency or have any specific needs.

## Whilst on site

- Use walkways where possible.
- Obey all safety signage.
- Follow any instructions provided.
- Safety footwear is a requirement for access to the Lab, Production and Warehouse areas.
- High viz vest required in the Warehouse and Yard.
- First aid and defibrillator equipment is available onsite, notify a member of staff if you require assistance.
- Smoking and vaping is only permitted in the designated areas.
- Report any accidents or near misses to a member of staff.
- Waste is segregated at HTData. Please dispose of any waste in the appropriate receptacle.

## If the alarm sounds

- Leave all belongings.
- Make your way calmly, and quickly to the assembly point.
- Do not use the lift.

Prior to any work commencing, contractors for organisations with more than 5 employees must provide RAMS (Risk Assessment & Method Statement) to their HT Data contact for review/approval.

In addition to, or in the absence of sufficient measures stated in your RAMS, the following points must be adhered to as a minimum:

Report to your HT Data contact *before* starting work.

Familiarise yourself with the emergency escape routes for the area in which you are working.

*Do not* attempt to carry out any work for which you are not adequately trained/certified.

Notify your HT contact if you are likely to create hazards, e.g. *noise, dust, hot works*.

You *must* work in a manner that ensures your own safety *and* the safety of others likely to be in the vicinity.

Notify the relevant departmental manager if you will need access to an area such as the warehouse or yard.

If you are using any hazardous material not covered in your RAMS, you *must* inform your HT Data contact and provide Material Data Sheets prior to use.

Advise your contact if any waste is likely to be generated during your visit so that arrangements can be made regarding suitable disposal, *especially* with hazardous waste.

You *must* take sufficient action to control any waste produced during the course of your work so that it does not cause an environmental, or safety hazard.

*No* waste is to be disposed of into a foul sewer, storm drain or poured onto the ground. Hazardous waste *must* be disposed of in accordance with applicable legislation.

If you will remove waste from the site, a Waste Transfer Note (WTN) *must* be provided stating the SIC code: 26200.

# HellermannTyton

## HellermannTyton Data Ltd

Waterside House, Edgar Mobbs Way  
Northampton NN5 5JE  
United Kingdom  
Tel: +44 (0) 1604 706633  
Fax: +44 (0) 1604 705454  
Email: [sales@htdata.co.uk](mailto:sales@htdata.co.uk)  
[www.htdata.co.uk](http://www.htdata.co.uk)

## HellermannTyton Data Ltd

Unit 2, Nectar Way, Pineham  
Northampton NN4 9BX  
United Kingdom  
Tel: +44 (0) 1604 706633  
Fax: +44 (0) 1604 705454  
Email: [sales@htdata.co.uk](mailto:sales@htdata.co.uk)  
[www.htdata.co.uk](http://www.htdata.co.uk)

