

# Welcome

## Fibre Broadband Extension Kit

### User Guide



Please read the installation instructions carefully before fitting.

If you have any uncertainty with regards to fitting this product, please consult a skilled installer.

## Broadband... where you need it

The fibre extension kit allows you to move your broadband router to a more 'central' location in your property. More often than not, the fibre entry point is at the front of the house and not always where you would want to position your router.

The fibre extension kit, provides you with flexibility to move your router to another, more central room (up to 30m). Not only can you have your broadband router in a more convenient location, but it could also improve the wifi coverage around your property.

\* With several model variations available, please check the front outer label to identify you have the correct product/connector type.

Scan for info  
& videos



**Installation videos and PDF instructions  
are available online.**

Scan the QR code with your smart phone or tablet to access video instructions and additional information.

# What's in the box

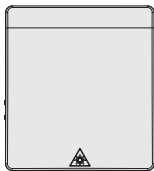


**Caution:**  
**Laser.**

Do not look  
into beam.

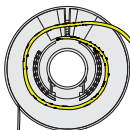
## Fibre Wall Outlet

This lives near your  
modem.



## Fibre Spool

This lives inside the outlet.



Plug 1

Plug 2

**Protective sock**  
For taking the connector  
through the wall.



**Nail and P Clip**  
For securing over  
doorways and long  
sections.



**Wall fixings\***  
Screws and wall  
plugs.  
\*Check the wall plugs  
are suitable for your  
wall type.



**Wall routing guide**  
Fittings for taking fibre  
through the wall to  
another room.



**Internal corner  
routing guide**



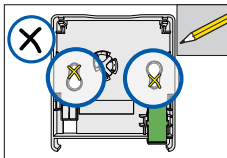
**External corner  
routing guide**

## What you'll need

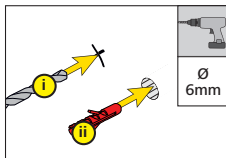
- 6mm drill bit
- 12mm drill bit (if routing through a wall)
- Spirit level
- Smart phone to obtain installation instructions / videos
- Fibre patch lead

# Setup guide

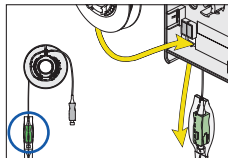
Fitting the fibre outlet to the wall. Position the outlet where you'd like your router to be located.



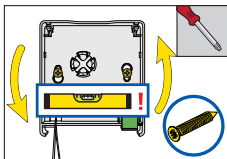
- ① Mark on the wall where the screw holes need to go.



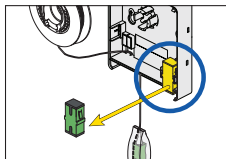
- ② Use suitable drill bit to drill 2x holes in the wall and insert suitable wall fixings.



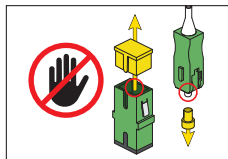
- ③ Thread **plug 1** through the hole in the base of the wall outlet.



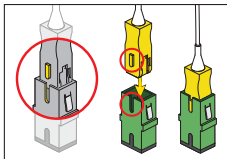
- ④ Screw **outlet** to wall and twist to adjust and straighten.



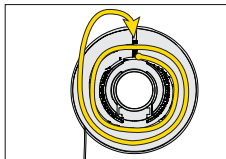
- ⑤ Remove **adaptor** from the outlet.



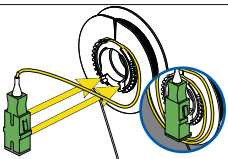
- ⑥ Remove dust caps on **plug 2** and the **adaptor** (Careful - do not touch the plug tip).

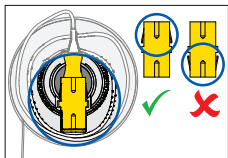


- ⑦ Push **plug 2** into adaptor.

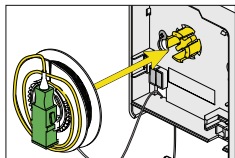


- ⑧ Wind **plug 2** fibre around in a loop on top of the spool and slot the **adaptor** into the holder on the spool.

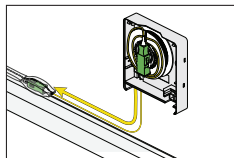




- 9 Ensure **adaptor pins** are facing upwards.

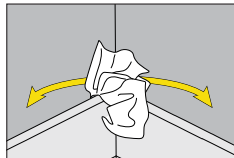


- 10 Fit the **spool** into the **outlet**. Listen for the "click".

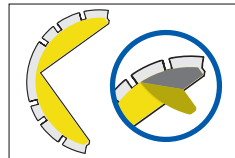


- 11 Unwind **plug 1** to your incoming fibre point and connect.

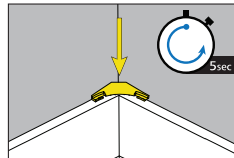
**Routing Through the Home.** Use fibre guides to maintain minimum bend radius round corners and doors.



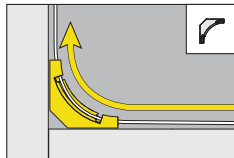
- 1 Ensure surfaces are dust-free prior to sticking **Corner routing guides**.



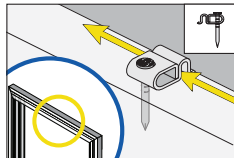
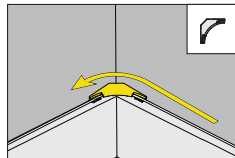
- 2 **Corner routing guides** are supplied with a self-adhesive backing strip.



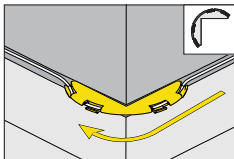
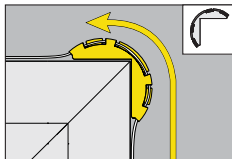
- 3 Peel off adhesive strip and hold down for 5 secs to stick.



- 4 Use the **internal corner routing guide** to go inside of bends i.e internal corners and up along door frames architraves, skirting boards and walls.

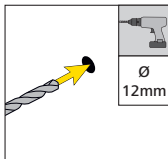


- 5 When routing over doorways, **P-clips** should be used to secure the fibre.

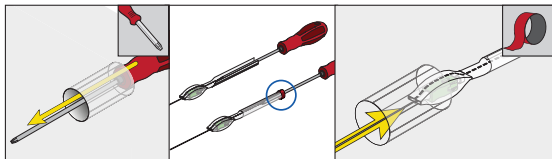


- 6 Use the **external corner routing guides** to go outside of bends i.e around the top of door frames and external corners on architraves, skirting boards and walls.

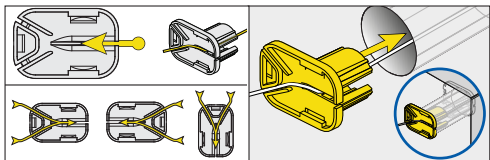
**Routing Through the Wall.** Use fibre guides to protect fibre and cover drill holes when going between walls.



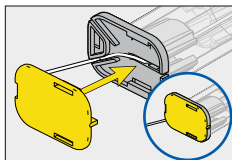
- 1 Use suitable drill bit to drill a hole through the wall and clean away dust.



- 2 From the other side, push a long screwdriver or equivalent through the hole. Tape the flat end of the **protective sock** to the screwdriver using the supplied **adhesive tape**. Pull the **protective sock** through the wall.

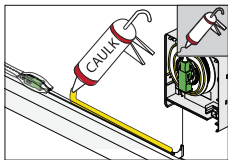


- 3 Insert fibre into the slot on the **through the wall guide** and follow the routing lines. The guide can face in any direction to maintain the minimum bend radius for the fibre.

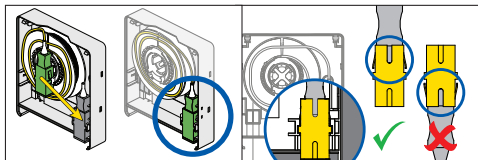


- 4 Once finished, clip the **lid** in place to secure the fibre.

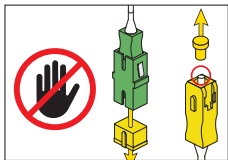
## Final Steps. Connecting your new fibre extension kit to incoming fibre and your router.



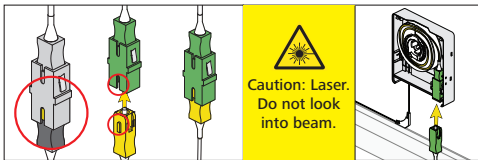
- ① Once finished, decorators caulk can be used to secure fibre.



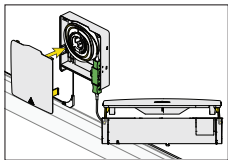
- ② Wind excess fibre back onto **spool** and return the **adaptor** to the **outlet**. Ensure the pins on the **adaptor** are facing upwards into the outlet.



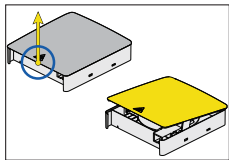
- ③ Remove dust caps on the **patch lead** and the **adaptor** (**Careful** - do not touch the plug tip).



- ④ Plug a fibre patch lead (not supplied) into the **adaptor** and the other end into the **router**.

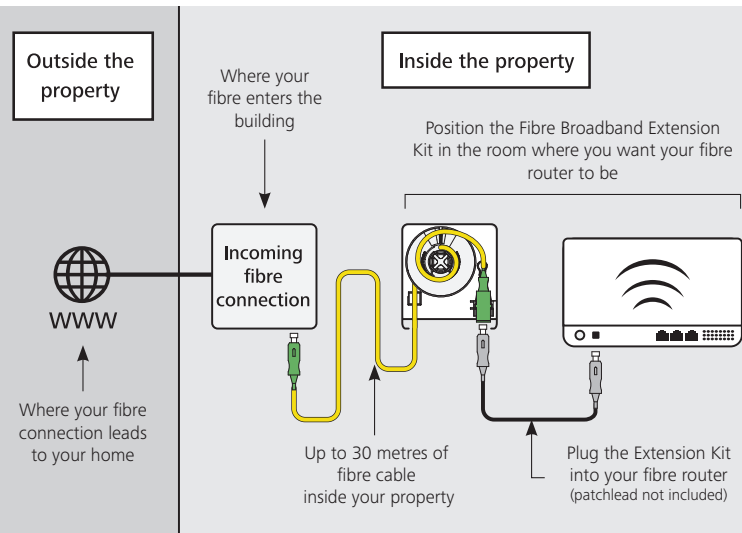


- ⑤ Once finished, fit the lid to the **outlet**.



- ⑥ To reopen the **outlet**, firmly lift from the bottom flap of the lid upwards.

# Typical network setup



**HellermannTyton**

HellermannTyton Data Ltd  
Waterside House, Edgar Mobbs Way  
Northampton NN5 5JE, UK  
[www.htdata.co.uk](http://www.htdata.co.uk)

